



Model: Z.L5.M

20" x 18" Wall Hung Lavatory

Zurn One Manual Hand Washing System

TAG _____

Architectural/Engineering Specification:

Complete manual hand washing system includes 20"x18" vitreous china wall hung lavatory with Z812A4-XL-3F polished chrome centerset 3-1/2" gooseneck faucet with lever handles, Z8743-PC chrome plated cast brass solid top grid strainer, Z8700-8B-PC series P-trap, and Z8804-XL-LR-LK-PC series supply stop kit.



Product Features:

- 20" [508 mm] x 18" [457 mm] vitreous china lavatory
- Wall hung lavatory provided with wall hanger bracket or for use with concealed arm carrier systems
- Front overflow
- Chrome-plated Cast Brass faucet body
- Quarter turn ceramic disk faucet operation
- 3 /12" centerline rigid or swing gooseneck spout
- 4" wristblade handles
- Complete commercial grade grid drain, P-Trap, supply stops and supply kit.



Zurn One System Packout Includes:

Lavatory - Z5344:

20" x 18" vitreous china wall hung lavatory with 4" center faucet holes. Provided with hanger plate and holes for concealed arm carrier systems.

Z812A4-XL-3F:

Polished chrome-plated cast brass faucet body with integral shanks, quarter turn ceramic disc cartridges and a 3-1/2" centerline rigid or swing gooseneck spout with a 0.5 gpm vandal-resistant pressure compensation spray outlet.

Grid Drain - Z8743-PC:

Chrome plated cast brass solid top, open grid, P.O. plug. Furnished with 5" long, chrome plated brass 17 gauge tailpiece and chrome plated cast brass locknut.

P-trap w/ Wall bend - Z8700-8B-PC :

Chrome-plated cast body 1 1/4" P-trap with cleanout, tubular wall bend, brass nuts and shallow escutcheon with compression inlet.

Lavatory Supply Stops - Z8804-XL-LR-LK-PC:

Chrome plated solid brass angle stop with 1/2" NOM compression inlet, 3/8" OD compression outlet, loose key, chrome plated copper riser tubes and chrome plated inlet flanges.

Compliance and Certification:



This system complies with the Buy American Act: Fixture manufactured in China; Faucet manufactured in US with US and foreign parts.

Meets the American Disabilities Guidelines and ANSI A117.1 requirements when installed according to these requirements.

Fixture - Complies with ASME A119.2 / CSA B45.1

Faucet - Complies with ASME A112.18.1 / CSA B125.1

Architectural/Engineering Approval

The information contained in this document is subject to change without notice.
Please contact Zurn for most up to date information.



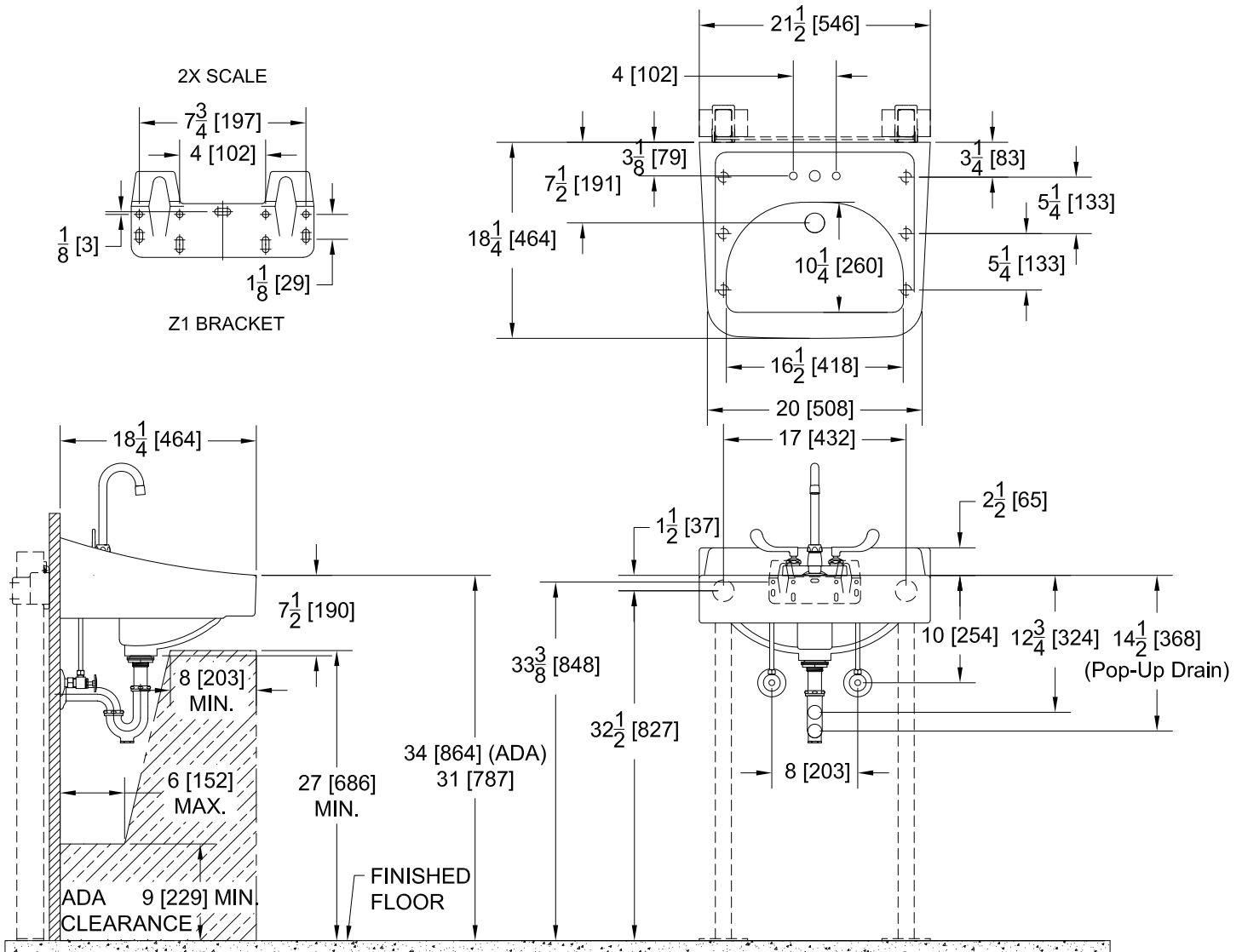
Model: Z.L5.M

20" x 18" Wall Hung Lavatory

Zurn One Manual Hand Washing System

TAG _____

Rough-in Dimensions



This system complies with the Buy American Act: Fixture manufactured in China; Faucet manufactured in US with US and foreign parts.

Meets the American Disabilities Guidelines and ANSI A117.1 requirements when installed according to these requirements.

Fixture - Complies with ASME A119.2 / CSA B45.1

Faucet - Complies with ASME A112.18.1 / CSA B125.1