

Restaurants, bars, cafeterias, hotels, shops... The Zummo Food Service line has been designed to provide service in any type of establishment. Depending on the characteristics, Zummo offers each business the perfect juicer to cover their

needs and get maximum return on their investment. The Zummo Food Service range incorporates Viva, the Nature juicer models, and the Z22 juice extractor, in all versions and with all accessories. Discover them!



Ref: Z25-BR

## VIVA

**Humanized technology comes alive.**

A new concept in citrus squeezing has arrived. Viva brings new value to your establishment, an innovative concept that combines design with the most cutting-edge technology. Maximum performance for your business. Maximum style.

# Humanized technology comes alive.

## 1. EQS and EVS® Advanced

With that intuitive system, the EVS squeezing kit is grouped into a single block minimising the number of parts. Easily assemble and disassemble the squeezing kit in one easy movement. Save time and turn it into profit.



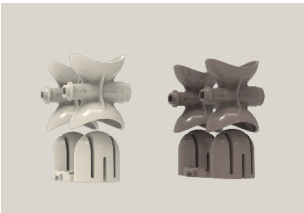
EQS and EVS Advanced

## 2. Squeezing kits

Squeezing kits of different sizes allow you to maximise the output of the squeezed fruit according to its diameter. Easily identifiable thanks to the characteristic colour of each range:

Medium (M): Beige; Optional- Small (S): Brown.

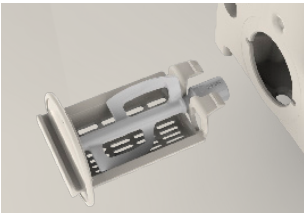
Thanks to the EQS system of the squeezing kit, assembling and disassembling the kits is even easier.



Squeezing kits

## 3. Automatic filter

An innovative rotating design which guarantees the highest quality and purity of the juice.



Automatic filter

## 4. Fruit dispenser

Up to 3,3 lbs of fruit in the minimum space. Its sloping design makes it easy to load the fruit and makes it highly visible, creating an eye-catcher in your business.



Fruit dispenser

| Technical features |  |
|--------------------|--|
| Fruits per minute  | 10   |
| Voltage            | 100-240V 50/60Hz                             |
| Motor              | Motor DC 135W/0,18cv                         |
| Consumption        | 165/200W and 2W Standby                      |
| Weight             | 79,4 lbs                                     |
| Bin capacity       | 1,32 gal                                     |
| Squeezing kits     | 2,16"-2,95" / Optional 1,64"-2,36"           |
| Dimensions         | 24,33"(h) x 13" (w) x 16,53"(l)              |
| Protection         | Blocking sensors                             |
| Feeder             | 3,30 lbs                                     |
| IoT                | Yes  |
| Modes              | Auto/Manual                                  |
| Colors             | Savannah Brown, Midnight Black, Forest Green |

EQS  
EXCHANGE QUICK SYSTEM

EVS<sup>ADVANCED</sup>  
EFFICIENT VERTICAL SYSTEM



EASY CLEAN



CLOSED CHAMBER



SILENCE SYSTEM



WARNING: This product can expose you to chemicals including bisphenol A, which is known to the State of California to cause cancer and birth defects or other reproductive harm. For more information go to [www.P65Warnings.ca.gov](http://www.P65Warnings.ca.gov)