

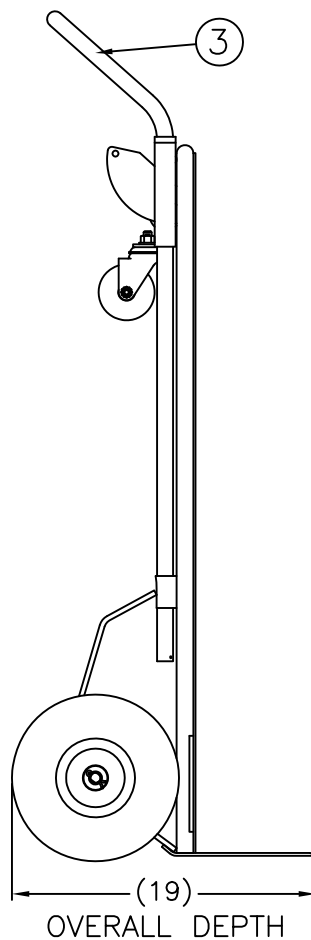
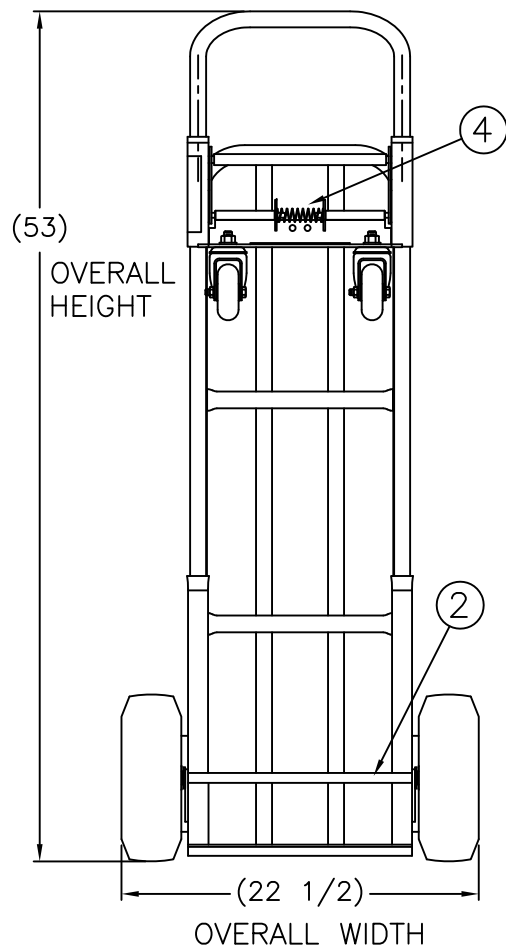
REPLACEMENT PARTS LIST			
ITEM	PART NO.	DESCRIPTION	QTY.
1	050602	WHEEL "P" 10 X 3.50"	2
2	050052	"D" AXLE (19 7/8")	1
3	051730	HANDLE	1
4	108492	SPRING FOR LOCK PINS	1
5	151244	3 1/2 COLSON CASTER (S23)	2
	108447	SWI. CASTER, POLYOLEFIN (Plate Type)	2

## 2-IN-1 DELUXE INDUSTRIAL STEEL HAND TRUCKS

- Converts easily between 2 and 4 wheel truck.
- Handle locks in horizontal and vertical positions.
- Two lengthwise straps and two cross braces prevent package fall-through.
- 3.5" or 5" Colson hi-Tech Performa Casters
- 3/4" Schedule 40 structural pipe bed frame.

**COLSON HI-TECH PERFORMA CASTERS:**

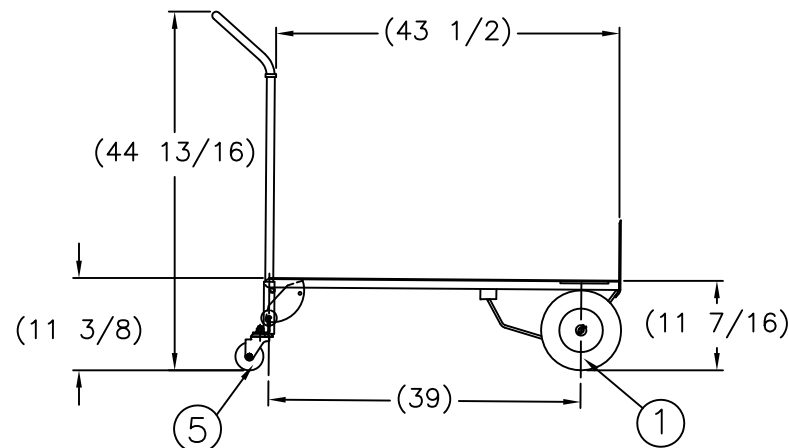
- Standard equipment on all models at no additional cost.
- Less energy required to start moving load and keep it moving.
- Performa wheels reject almost every type of floor debris, including metal shavings, chips, sand and gravel.
- Smooth, quiet ride of a soft-tread wheel.
- As durable as a hard-tread wheel.



P/N	210139
Model:	156-S23-P
Weight:	55.25 lbs
Capacity:	700 lbs 2-Wheel 1000 lbs 4-Wheel

Boxed: NO  
Hub: Steel Offset  
Dimensions: 10" x 3.5"  
Wheel Type: Pneumatic

Height: 53"  
Bed Size: 14" x 44.5"  
Total Width: 22.5"



THIS DRAWING IN ALL PARTICULARS IS WESCO MFG. CO. PROPERTY. ALL RIGHTS OF DESIGN, INVENTION OR USE OF ARE RESERVED.

PRINT ISSUED

JAN 10, 2007

WESCO MANUFACTURING  
ENGINEERING DEPARTMENT

WESCO MANUFACTURING CO. NORTH WALES PENNA. 19454		DRAWING: SKH 10-9-95	
PART NAME 156-S23-P		CHECKED: EGK 10-13-95	
TOLERANCE UNLESS OTHERWISE SPECIFIED		APP. ENGR.	
FRACTION	3 PLACE DECIMAL	2 PLACE DECIMAL	
± 1/64	± .005	± .01	
ANGULAR ± 1-1/2°	SHEET 1	OF 1	
BROKE ALL SHARP EDGES AND ROUNDS ALL ROUNDS			
C- 210139			REV