



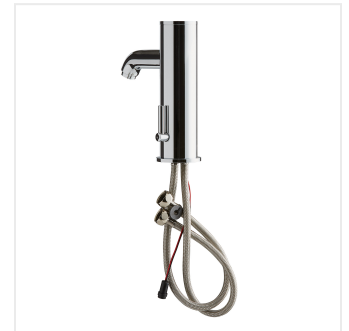
Waterloo Deck-Mounted Hands-Free Sensor Faucet with 4" Straight Spout

#750EFAD

Item #: 750EFAD Qty: _____

Project: _____

Approval: _____ Date: _____



Features

- 4" straight spout, 2.2 GPM flow rate
- Deck-mounted, single hole base, (2) 18" stainless steel supply lines, 1/2" NPSM female x 3/8" female
- Above-deck mixing valve for easy temperature adjustment
- Solid chrome-plated brass construction for long life
- Includes AC adapter

Certifications

 1-15P
  3/8" Water Connection
  ADA Compliant

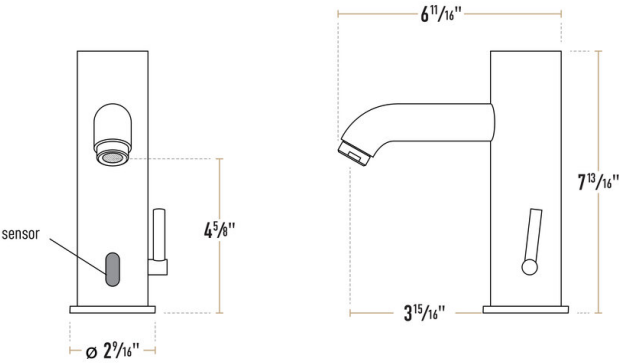
 CSA, US and Canada
  Hands-Free/Touchless

Technical Data

Spout Length	6 11/16 Inches
Faucet Height	7 13/16 Inches
Battery Type	AA
Faucet Centers	Single
Features	ADA Compliant ASME A112.18.1 / CSA B125.1 Hands Free Massachusetts Accepted Plumbing Product NSF/ANSI 372
Finish	Chrome

Technical Data	
Flow Rate	2.2 GPM
Included	Flex Inlets
Material	Brass
Mounting Holes Required	1 Mounting Hole
Mounting Style	Deck Mounted
Plug Type	NEMA 1-15P
Pressure Rating	60 PSI
Spout Clearance	4 5/8 Inches
Spout Type	Cast
Temperature Rating	194 Degrees F
Type	Touchless Faucets
Water Inlet Size	3/8 Inches

Plan View



Notes & Details

This Waterloo deck-mounted hands-free sensor faucet is the perfect solution when you need a dependable water fixture for your facility's restrooms and hand-washing areas! It features a 4" straight spout and a chrome-plated finish, with an attractive rounded base to provide a contemporary and refined look wherever it's installed.

This unit has an infrared proximity sensor with a 30 second timeout feature and an adjustable sensor range of 2-21 cm. Because a sensor activates water flow, it has several advantages over a traditional handle-style faucet. It is hands-free, which reduces the opportunity for germs to spread, and it also prevents the faucet from running when it's not needed, which helps to cut down on your water bill. This faucet includes an integrated mixing valve inside the faucet base, which can be adjusted using the lever on the side. By keeping the controls within the base, you can easily tweak the output temperature of the faucet without having to get under the counter and adjust a separate mixing valve, like many sensor faucets require.

The UL certified AC adapter with a level VI efficiency rating provides power for the faucet's control module. Or, you can use (4) AA batteries for cordless operation during power outages. A pair of 18" flexible stainless steel connectors with 1/2" NPSM female x 3/8" female compression fittings connect the mixing valve to your building's water lines.

Waterloo sensor faucets provide the industry-leading quality you expect. With a heavy brass faucet body and certifications from a wide range of national and local regulatory agencies, you can install this model with confidence. And to give you total peace of mind, it comes with a 3-year replacement warranty.

⚠ WARNING: This product can expose you to chemicals including lead, which are known to the State of California to cause cancer and birth defects or other reproductive harm. For more information, go to www.p65warnings.ca.gov.