



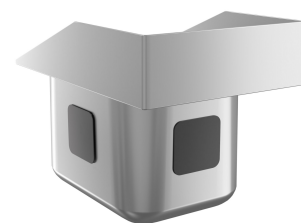
## Waterloo 10" x 14" x 10" 18 Gauge Stainless Steel One Compartment Drop-In Sink with Side Splashes

#750DI110S18

Item #: 750DI110S18 Qty: \_\_\_\_\_

Project: \_\_\_\_\_

Approval: \_\_\_\_\_ Date: \_\_\_\_\_



### Features

- Seamless deep drawn sink bowl with welded seams for easy cleaning
- Innovative self rim design allows flush mounting into any countertop
- 10" x 14" x 10" bowl size
- 18 gauge, type 304 stainless steel construction
- Comes with sound deadening patches to reduce ambient noise in your kitchen

### Certifications



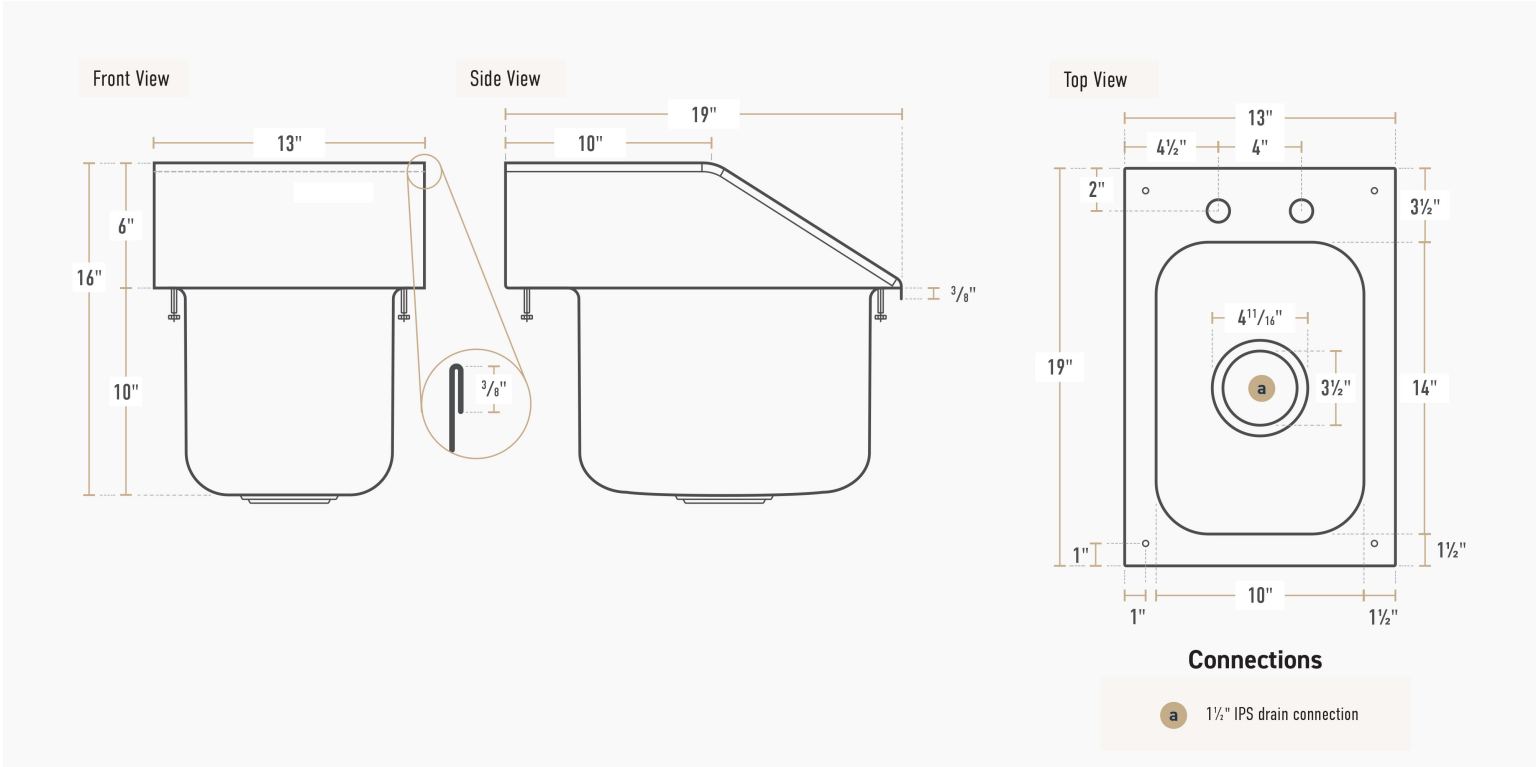
### Technical Data

Length	13 Inches
Width	19 Inches
Height	15 Inches
Bowl Depth	10 Inches
Bowl Front to Back	14 Inches
Bowl Left to Right	10 Inches
Color	Silver
Drain Opening	3 1/2 Inches
Drain Outlet Size	1 1/2 Inches
Edge Style	Flush



Technical Data	
Faucet Centers	4 Inches
Features	NSF Listed Side Splashes
Gauge	18 Gauge
Installation Type	Drop In
Material	Stainless Steel
Number of Compartments	1 Compartment
Stainless Steel Type	Type 304
Type	Drop-In Sinks

## Plan View



## Notes & Details

Equip your kitchen, prep area, or bar with this Waterloo 10" x 14" x 10" 18 gauge stainless steel one compartment drop-in sink with side splashes. This sink features a drop-in design that fits down through the top of your counter. It has an innovative self rim design along the top to provide a professional appearance once it's installed in any countertop. This sink also comes with side splashes to protect surrounding countertops from contaminated water.

Designed for durability, corrosion-resistance, and sanitation this sink's bowl is made of seamless deep drawn 18 gauge, type 304 stainless steel with welded seams. Plus, the 3 1/2" drain with drain opening is ready for installation so you can get your new sink up and running.

To get your sink up and running as quickly as possible, this unit comes with the required installation hardware.

**⚠ WARNING:** This product can expose you to chemicals including lead, which are known to the State of California to cause cancer, birth defects, or other reproductive harm. For more information, go to [www.p65warnings.ca.gov](http://www.p65warnings.ca.gov).