

PORT AUTHORITY

Port Authority® Short Sleeve UV Daybreak Shirt  
W961

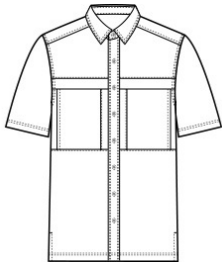


Sun and moisture are no problem for this versatile, lightweight, highly breathable shirt. Relaxed styling makes it perfect for outdoor or indoor wear.

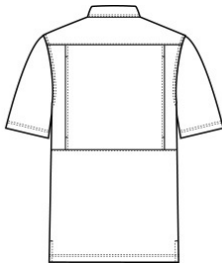
- 2.2-ounce, 100% polyester poplin
- 2.5-ounce, 100% polyester poplin (White)
- 2.1-ounce, 100% polyester poplin (Plaids)
- Moisture-wicking
- UPF rating of 30
- Hidden button-down collar
- Dyed-to-match buttons
- Translucent buttons (Plaids)
- Two chest pockets with concealment flaps and hook and loop closures
- Vented back panel with mesh ventilation
- Straight hem with side vents

CARE INSTRUCTIONS

Fabric & Mesh Trim: 100% Polyester. Fasten Closures. Hook & Loop Before Washing. Do Not Wring. Machine Wash Cold Gentle Cycle With Like Colors. Only Non-Chlorine Bleach If Needed. Fabric Softener Not Recommended. Tumble Dry Low. Remove Promptly.

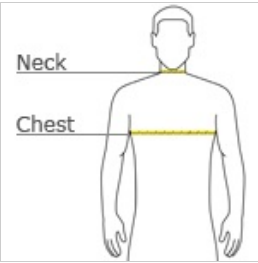


front



back

HOW TO MEASURE



CHEST WIDTH  
Measure under the arm and around the fullest part of the chest with arms down, keeping tape horizontal.

NECK  
Measure around the fullest part of the neck at the base.

SIZE CHART

	XS	S	M	L	XL	2XL	3XL	4XL
Chest	32-34	35-37	38-40	41-43	44-46	47-49	50-53	54-57
Neck	14 1/2-15	15-15 1/2	15 1/2-16	16-16 1/2	16 1/2-17	17-17 1/2	17 1/2-18	18-18 1/2

COLOR INFORMATION

Bright Seafoam  
PMS 564C

Deep Black  
PMS BLACK C

Gusty Grey  
PMS COOL GREY 8C

Light Blue  
PMS 644C

Oat

Rich Red  
PMS 207C

Silver/ Gusty Grey  
Crosshatch Plaid  
PMS COOL GRAY 8C

True Navy  
PMS 533C

True Royal  
PMS 7686C

True Royal/ White  
Mini Plaid  
PMS 7686C

White

Yellow  
PMS 600C