



The Signature of Quality

FEDERAL INDUSTRIES

A Standex Company

215 Federal Avenue
Belleville, Wisconsin 53508-9201

Phone: 800-356-4206

Fax: 608-424-3234

Email: Geninfo@Federalind.com

Website: Federalind.com

Project Name: _____

Item #: _____

Model #: _____ Qty: _____

Approval: _____

AIA #

SIS #

VISION SERIES - High Profile Self-Serve Refrigerated Merchandiser - 78"

Designed with impulse sales in mind. Get maximum return from an attention-grabbing merchandiser and increase profits.



Model VRSS4878S Shown

OPTIONAL ACCESSORIES

- | | |
|---|---|
| <input type="checkbox"/> Special External Laminate Finish | <input type="checkbox"/> LED Lights Below Shelves |
| <input type="checkbox"/> White Interior (Including Shelving) | <input type="checkbox"/> 2 1/2" recessed (63.5mm) or 4" (101.6mm) Casters (Self Contained Models Only) |
| <input type="checkbox"/> Stainless Steel Interior (Including Shelves) | <input type="checkbox"/> Legs, 6", (152mm) |
| <input type="checkbox"/> Stainless Steel Exterior Finish | <input type="checkbox"/> Skirt with Casters or Legs |
| <input type="checkbox"/> Reflective End Glass | <input type="checkbox"/> Joining Kit for Continuous Line-Ups |
| <input type="checkbox"/> Deli Meat Pegs | <input type="checkbox"/> Condensate Evaporator Assembly (Field Install) (Separate 120V, 20A Circuit Required) (Remote Only) |
| <input type="checkbox"/> Sliding Rear Access Doors (Hinged on 36" case) | <input type="checkbox"/> Remote Refrigeration With Condensate Pump (R449a Refrigerant, EEV Included) |
| <input type="checkbox"/> Roll-up Security Cover (Square End Profile) | <input type="checkbox"/> Front Cart Bumper |
| <input type="checkbox"/> Removable Security Cover | <input type="checkbox"/> Reversing Condenser Coil Fan |
| <input type="checkbox"/> Solid Right/Left End Panels (mirrored) | <input type="checkbox"/> Additional Lighted (LED) Shelf |

*Additional options available on the website and price list.

MODEL	DIMENSIONS (Includes End Panels)
<input type="checkbox"/> VRSS3678S	36 x 33 x 78 (in) 914 x 838 x 1981 (mm)
<input type="checkbox"/> VRSS4878S	47.25 x 33 x 78 (in) 1200 x 838 x 1981 (mm)
<input type="checkbox"/> VRSS6078S	59.25 x 33x 78 (in) 1505 x 838 x 1981 (mm)
<input type="checkbox"/> VRSS7278S	71.25 x 33x 78 (in) 1810 x 838 x 1981 (mm)

STANDARD FEATURES

Model Features

- Welded powder coated steel base fabrication
- Choice of six standard laminates on exterior
- Black powder coated metal front & rear grill
- Black Trim
- Stainless steel display deck
- Glass ends or solid black ends
- Black interior back panel
- Moisture resistant end panel construction
- Front air intake / front & rear discharge
- Energy saving night curtain
- Adjustable Leg Levelers
- Cord & Plug

Refrigeration

- Electronic temperature control with on demand defrost
- Refrigeration controls maintain 38°-40°F (3.3°-4.4°C) Note: Case temperature will vary if the air curtain is disrupted.
- Thermometer
- R449a refrigerant

Shelving

- Four tiers of adjustable black metal shelves with black price tag molding. Shelves can be flat or slanted downwards at 10°

Lighting

- 3500K LED top light

Agency Approvals

- UL, C-UL and UL Sanitation listed to NSF-7, Type II conditions
- DOE 2017 compliant



WARRANTY*
One year Parts and Labor
2nd thru 5th year part only
service compressor
(U.S.A. and Canada)

Note: Information is subject to change at any time. Visit www.federalind.com for the most current specs.

AIA #	<h1>VISION SERIES - High Profile Self-Serve Refrigerated Merchandiser - 78"</h1> <h2>Product Specifications</h2>
SIS #	

Intended Environment: Type II (Self Contained and Remote) - Designed to operate in maximum ambient conditions of 80°F (24°C) and 55% relative humidity.		
Zone	Intended Product To Be Displayed	Avg Prod Temp °F/°C
All	Packaged Refrigerated Products	38°F / [3.3°C]

DIMENSION: xx"/(mm)

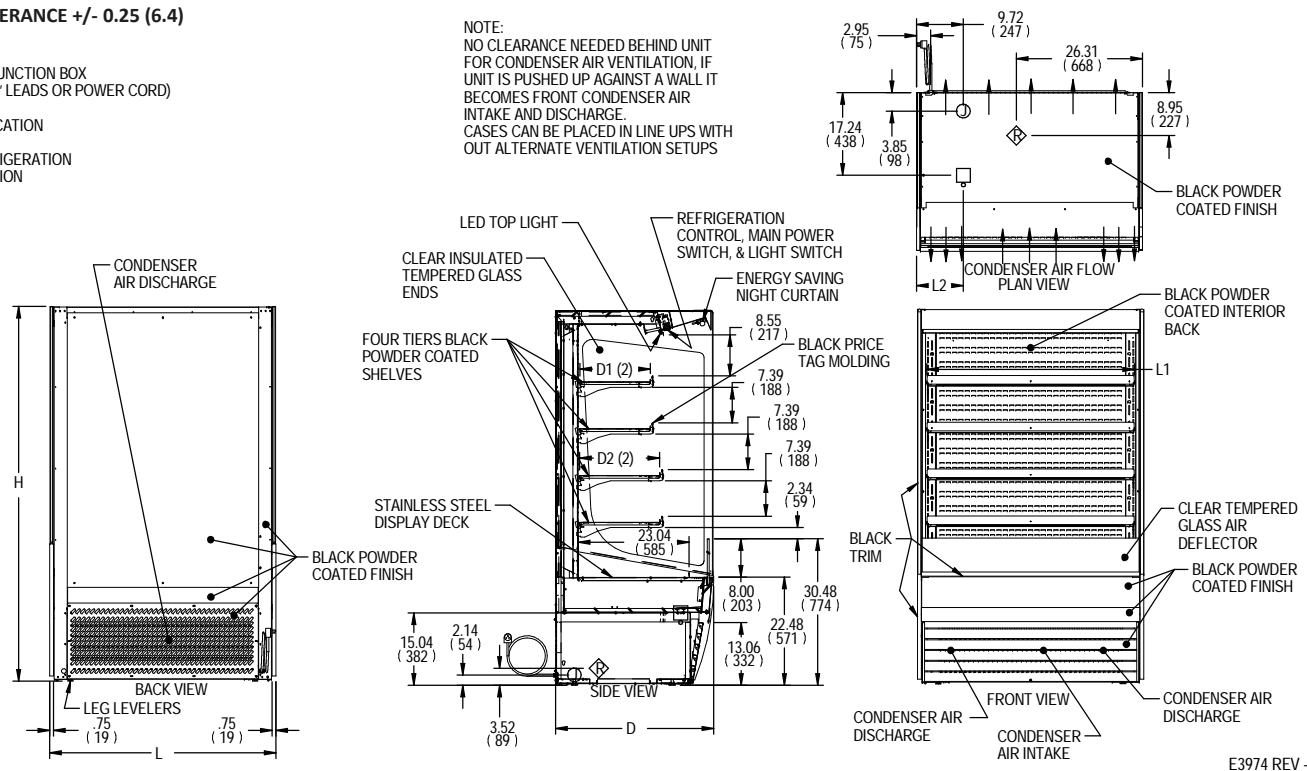
DIMENSION TOLERANCE +/- 0.25 (6.4)

SYMBOL KEY:

Ⓝ ELECTRICAL JUNCTION BOX (SUPPLIED W/6" LEADS OR POWER CORD)

□ TUB DRAIN LOCATION

Ⓡ REMOTE REFRIGERATION LINE CONNECTION



E3974 REV -

										SELF CONTAINED						REMOTE					
MODEL	DIMENSIONS			TUB DRAIN	SHELVING			INTERIOR VOLUME CU FT	STANDARD CONNECTION CORD & PLUG				FREON	C.U. HP	SHIP WGHT	PERMANENT CONNECT		FREON	BTU'S @ + 20°	SHIP WGHT	
	L	D	H	L2	# OF TIERS	L	D1		D2	2 WIRE + GROUND	AMPS	MAX FUSE SIZE			NEMA CORD & PLUG	LBS	2 WIRE + GROUND			LBS	
	in	in	in	in		in	in		in								120/60/1				
	mm	mm	mm	mm		mm	mm		mm								AMPS				MAX FUSE SIZE
VRSS3678S	36	33	78	6.74	4	32.25	14.634	16.634	19.47	120/60/1	12.7	20	NEMA 5-20P	R449A	3/4	740	2.5	15	R449A	6,720	695
	914	838	1981	171		819	372	423								336					315
VRSS4878S	47.25	33	78	13.49	4	43.25	14.634	16.634	25.74	208-240/60/1	12.5	20	NEMA 6-20P	R449A	1	820	3.0	15	R449A	9,580	775
	1200	838	1981	343		1099	372	423								372					351
VRSS6078S	59.25	33	78	14.12	4	55.25	14.634	16.634	32.58	208-240/60/1	13.5	20	NEMA 6-20P	R449A	1-1/4	1030	3.5	15	R449A	11,200	985
	1505	838	1981	359		1403	372	423								467					447
VRSS7278S	71.25	33	78	20.12	4	67.25	14.634	16.634	39.42	208-240/60/1	13.7	20	NEMA 6-20P	R449A	1-1/4	1080	3.5	15	R449A	12,300	1040
	1810	838	1981	511		1708	372	423								490					472

- Due to continuing engineering improvements, specifications are subject to change without notice.
- Case temperature will vary if the air curtain is disrupted.



FEDERAL INDUSTRIES
A Standex Company
215 Federal Avenue Belleville, Wisconsin 53508-9201

Phone: 800-356-4206
Fax: 608-424-3234
Email: Geninfo@Federalind.com
Website: Federalind.com