



*The Signature of Quality*

## FEDERAL INDUSTRIES

A Standex Company

215 Federal Avenue  
Belleville, Wisconsin 53508-9201

**Phone:** 800-356-4206

**Fax:** 608-424-3234

**Email:** Geninfo@Federalind.com

**Website:** Federalind.com

Project Name: \_\_\_\_\_

Item #: \_\_\_\_\_

Model #: \_\_\_\_\_ Qty: \_\_\_\_\_

Approval: \_\_\_\_\_

AIA #

SIS #

## Vision Series - Curved End Self-Serve Heated Merchandiser - 60"

Designed for customers looking to increase grab and go sales of hot packaged products or to complement refrigerated offering.



Model VHSS3660C  
Shown With Solid Ends

### OPTIONAL ACCESSORIES

- |                                                                 |                                                                            |
|-----------------------------------------------------------------|----------------------------------------------------------------------------|
| <input type="checkbox"/> Special Exterior Laminate Finish       | <input type="checkbox"/> Legs, 6" (152mm)                                  |
| <input type="checkbox"/> Graphics Package                       | <input type="checkbox"/> 2 1/2" (63.5 mm) recessed or 4" (101.6mm) casters |
| <input type="checkbox"/> Stainless Steel Exterior               | <input type="checkbox"/> Front Cart Bumper                                 |
| <input type="checkbox"/> Solid Right/Left End Panels (mirrored) | <input type="checkbox"/> Sliding Rear Doors                                |
| <input type="checkbox"/> Reflective End Glass                   | <input type="checkbox"/> LED Lights Below Shelves                          |
|                                                                 | <input type="checkbox"/> Replacement Shelves and Deck                      |
|                                                                 | <input type="checkbox"/> Joining kit for continuous line-ups               |

\*Additional options available on the website and price list.

MODEL	DIMENSIONS (Includes End Panels)
<input type="checkbox"/> VHSS2460C	24 x 33 x 60 (in) 610 x 838 x 1524 (mm)
<input type="checkbox"/> VHSS3660C	36 x 33 x 60 (in) 914 x 838 x 1524 (mm)
<input type="checkbox"/> VHSS4860C	47.25 x 33 x 60 (in) 1200 x 838 x 1524 (mm)

### STANDARD FEATURES

#### Model Features

- Matches profile of the VRSS & VNSS models
- Independently controlled heated shelves, and deck, for different menu items
- Stainless steel heated display deck, stainless steel interior sides and back panel
- Top LED light for maximum merchandising appeal and long life
- Powder coated base frame
- Tempered glass ends or solid ends (Moisture resistant end panel construction)
- End base comes Black Standard or Choice of six standard color laminates
- Adjustable Leg Levelers
- Cord & Plug

#### Heating System

- Easy front access microprocessor digital temperature controls
- Individually heated shelves that are easily adjusted or replaced
- Holds product up to average temperature of 160°F (71°C)

#### Shelving

- Three heated tiers of adjustable stainless-steel shelves with price tag rails on 1 5/8" centers. Shelves can be flat or slanted downwards at 10°
- Removable heated deck

#### Lighting

- 3500K LED Top Light

#### Base

- Leg levelers
- (6'/1829mm) Cord and plug

#### Agency Approvals

- UL and NSF



**WARRANTY\***  
One year Parts and Labor  
(U.S.A. and Canada)

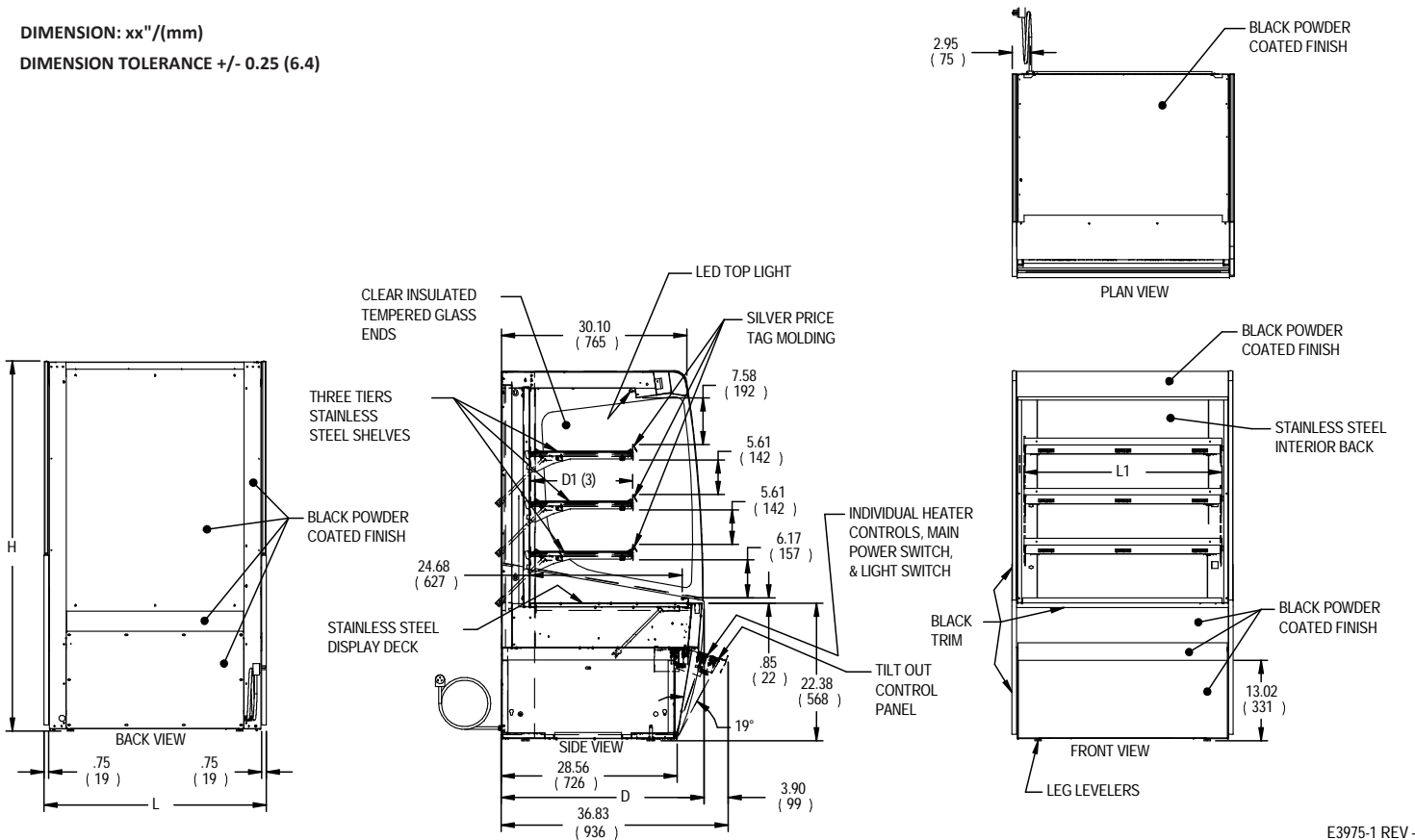
Note: Information is subject to change at any time. Visit [www.federalind.com](http://www.federalind.com) for the most current specs.

Revised 08/19/2021

AIA #	<h1>Vision Series - Curved End Self-Serve Heated Merchandiser - 60"</h1> <h2>Product Specifications</h2>
SIS #	

	Intended Product to Be Displayed	Warmest Avg Prod Temp °F/°C
All	Zone Intended Product To Be Displayed Packaged Refrigerated Products	160°F/(71.1°C)

DIMENSION: xx"/(mm)  
 DIMENSION TOLERANCE +/- 0.25 (6.4)



E3975-1 REV -

MODEL	DIMENSIONS			SHELVING			INTERIOR VOLUME CU FT	STANDARD CONNECTION CORD & PLUG			SHIP WEIGHT
				# OF TIERS	L1	D1		2 WIRE + GROUND		NEMA CORD & PLUG	
	L	D	H		208-240/60/1						
	in	in	in			AMPS		MAX FUSE SIZE			
	mm	mm	mm						LBS		
										KILO	
VHSS2460C	24	33	60	3	32.25	16.61	9.07	6.9	15	NEMA 6-15P	310
	610	838	1524		819	422					141
VHSS3660C	36	33	60	3	43.25	16.61	13.98	11.1	15	NEMA 6-15P	355
	914	838	1524		1099	422					161
VHSS4860C	47.25	33	60	3	55.25	16.61	18.48	15.4	20	NEMA 6-20P	490
	1200	838	1524		1403	422					222

- Packaged food products placed in case must be pre-heated before placing in case.
- Due to continuing engineering improvements, specifications are subject to change without notice.



**FEDERAL INDUSTRIES**  
 A Standex Company  
 215 Federal Avenue, Belleville, Wisconsin 53508-9201

**Phone:** 800-356-4206  
**Fax:** 608-424-3234  
**Email:** Geninfo@Federalind.com  
**Website:** Federalind.com