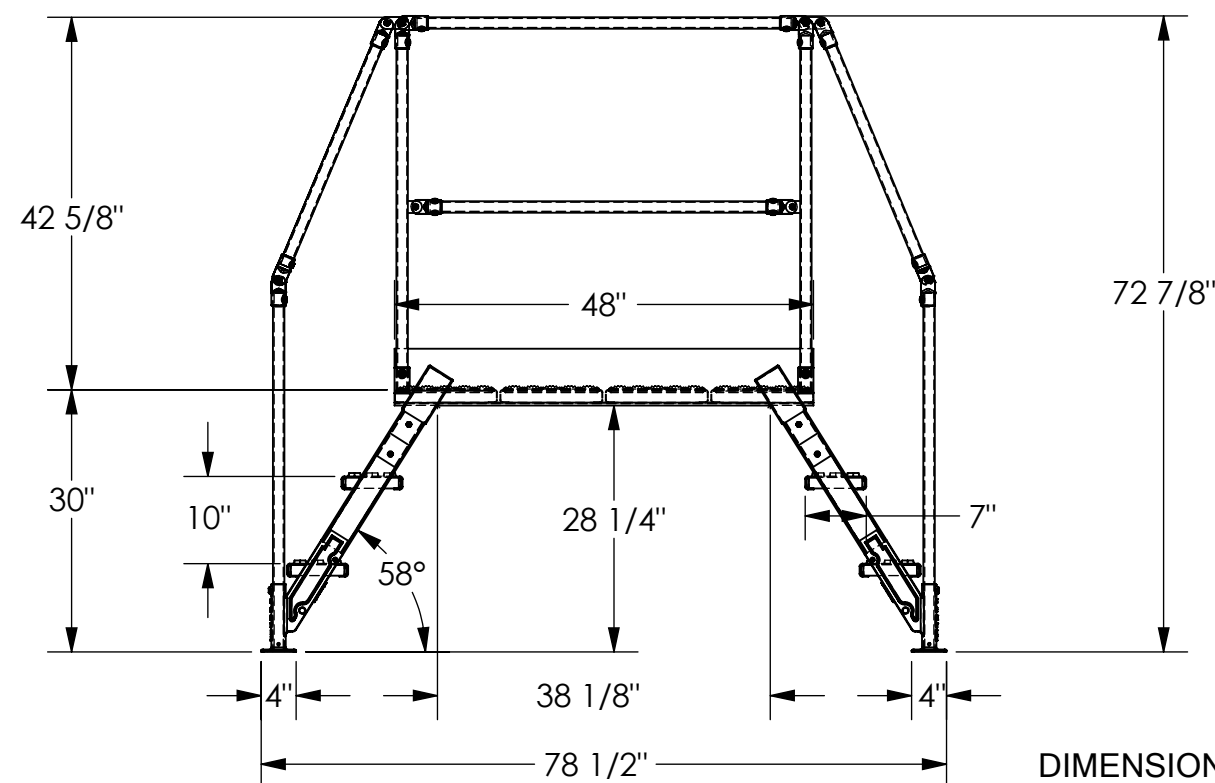


APPROX WEIGHT: 324.82 lbs.  
DOES NOT INCLUDE WEIGHT OF POWER OR PACKAGING!!!

\*\*\* ANY ADDITIONS, DELETIONS, OR OMISSIONS MUST BE CORRECTED ON THIS DRAWING AS THIS DRAWING WILL BE CONSIDERED ALL INCLUSIVE \*\*\*

ALL GRAPHICS PROVIDED ARE FOR REFERENCE ONLY. IF CERTAIN DIMENSIONS ARE CRITICAL PLEASE VERIFY THOSE DIMENSIONS WITH YOUR SALESPERSON



DIMENSION TOLERANCE  $\pm 1/4"$

*SPECIAL FEATURES*  
NONE

**NOTE**

UNIT MUST BE ANCHORED TO  
THE FLOOR!!!  
Ø7/16" MOUNTING HOLES  
8 TOTAL MOUNTING HOLES PER  
STANDARD UNIT  
2 MOUNTING HOLES PER CORNER  
BRACKET

38 1/8" W x 28 1/4" H  
TOP PLATFORM HEIGHT: 30"  
STEP HEIGHT SPACING: 10"  
STEP DEPTH: 7"  
STEP & PLATFORM WIDTH 23 1/2"  
CLIMB ANGLE: 58°  
HOT DIPPED GALVANIZED FINISH  
ALL STEPS & PLATFORM ARE  
SERRATED STEEL  
KNOCK-DOWN HANDRAILING  
(UNIT SHIPS KNOCKED DOWN,  
ASSEMBLY REQUIRED)

**A  
P  
P  
R  
O  
V  
A  
L**

I, THE UNDERSIGNED, AGREE THAT THE PRODUCT AS REPRESENTED SATISFIES DESIGN AND DIMENSION REQUIREMENTS. I ALSO ACKNOWLEDGE MY DUTY TO CONFIRM PRODUCT AND INSTALLATION COMPLIANCE WITH ALL APPLICABLE FEDERAL, STATE AND LOCAL REGULATIONS AND STANDARDS.

**UNITS REQUIRING APPROVAL DRAWINGS OR  
MODIFIED ARE NON-RETURNABLE**

☐ As drawn      ☐ As marked

Signed: \_\_\_\_\_ Date: \_\_\_\_\_

Printed Name: \_\_\_\_\_

LEAD TIME WILL START UPON RECEIPT OF SIGNED APPROVAL DRAWING

DISTRIBUTOR'S NAME:

P.O.#	X
-------	---

## VESTIL MANUFACTURING

W.O.#	X
-------	---

DRAWN BY: BCN

DATE: 4/29/2016

SALES:	X
--------	---

REFERENCE: X

SCALE: 1:22

FILE NAME:	
------------	--

QUOTED LEAD TIME: X

QUOTE #	
X	

44-007-730