



BUFFET & CATERING
ACCESSORIES & DISPOSABLES

BUFFET
ACCESSORIES





NEW

TWO-TIERED DISPLAY STAND

Display and merchandise your baked goods, fruits, or grab & go prepacked foods with elegant style. Mixed materials offer a neutral yet modern presentation. Fits in well with our existing Industrial Collection as well as our range of Acacia Crates, Paddles and more!

- Available in two styles: round and rectangular
- Black Powder Coated Steel, Acacia Wood
- Collapsible design
- Light assembly required; assembly instructions included
- Do not submerge in water, wipe with a damp cloth and dry immediately



Item #	Description	Min Order/ Case Pack
TWO-TIERED DISPLAY STAND, ACACIA & BLACK POWDER COATED METAL		
a. 10718	▶ Rectangle, 17½ x 8 x 18"	1 ea / 2 ea
b. 10719	▶ Round, 11¾ x 11¾ x 15"	1 ea / 4 ea

a



b



have a little **fun**
with Your tablescape



CAKE SETS, STANDS & COVERS

- Stainless Steel and melamine stands and cake plates
- Polystyrene covers



Item #	Description	Min Order/ Case Pack
CAKE SETS		
a. 821422	Cake Stand / Cover Set, 12 $\frac{3}{4}$ " x 13 $\frac{3}{4}$ " h	1 ea
b. *H820P422	Cake Plate / Cover Set, 13 x 8" h	1 ea
*H821422	Cake Stand / Cover Set, 12 $\frac{3}{4}$ " x 13 $\frac{3}{4}$ " h	2 ea
STANDS & COVERS		
c. 700018	CroftHouse Collection, "Eat More Cake" Stand, Melamine, 11 $\frac{1}{2}$ " dia x 4" h	1 ea / 4 ea
d. 821	Assembled Stand, 12 $\frac{3}{4}$ " dia x 6 $\frac{3}{4}$ " h	1 ea / 6 ea
821U	Unassembled Stand, 12 $\frac{3}{4}$ " dia x 3 $\frac{3}{4}$ " h	1 ea / 6 ea
e. 422	Metal Handle Cover, 12" dia x 7 $\frac{1}{2}$ " h	6 ea
f. 422A	▶ Metal Handle Cover, 12" dia x 7 $\frac{1}{2}$ " h	6 ea
g. H820P	Low Profile Cake Plate, 13" dia x $\frac{1}{2}$ " h	1 ea / 12 ea
421	Plastic Handle Cover, 12" dia x 7 $\frac{1}{2}$ " h	6 ea
CAKE DOME, SAN PLASTIC		
i. PCD1	Cake Dome, 12" dia x 5 $\frac{3}{4}$ " h	1 ea / 6 ea



a (2-piece set)



b (2-piece set)

e (cover only)

g (plate only)



c

This two-toned melamine cake stand reveals a fun and friendly reminder to dessert lovers!



d



f



i

Cake domes fits channel on Frostone Slate tray (MGC13) Industrial Collection Rotating Cake.



h

FROSTONE COLLECTION™ TRAYS



Item #	Description	Min Order/ Case Pack
RECTANGULAR TRAYS—MELAMINE, TEXTURED FINISH		
M165	White, 15¾ x 5"	1 ea / 3 ea
M186	White, 17¾ x 5½"	1 ea / 3 ea
M2010	White, 19½ x 10½"	1 ea / 3 ea
M206	White, 20 x 6"	1 ea / 3 ea
a. M2511	White, 24½ x 10½"	1 ea / 3 ea
M2811	White, 27½ x 10½"	1 ea / 3 ea
M2213	White, 22 x 12¾"	1 ea / 3 ea
SQUARE TRAYS—MELAMINE		
M1414	White, 14"	1 ea / 3 ea
M1717	White, 16¾"	1 ea / 3 ea
b. M1919	White, 18¾"	1 ea / 3 ea
ASSORTED TRAYS—MELAMINE, PEBBLED FINISH		
c. M14	Round, White, 14" dia	1 ea / 3 ea
M22	Round, White, 22" dia	1 ea / 3 ea
d. M2015	Oval, White 20 x 15"	1 ea / 3 ea
MPD21	Round, White, 18½" dia (Fits Cover PC2 on p. 74)	1 ea / 6 ea
e. MPD2415	Rectangular, White, 20¾ x 12¾ x 1¾" (Fits Cover PC1 on p. 74)	1 ea / 6 ea



a



b



c



d



e

CASCADE RISER™

- Versatile and attractive buffet solution
- Can be nested together or fanned apart
- Set of 3: Small (17¼ x 7½ x 4¼), Medium (19½ x 7½ x 6¼), Large (22 x 7½ x 7¼)



f



g

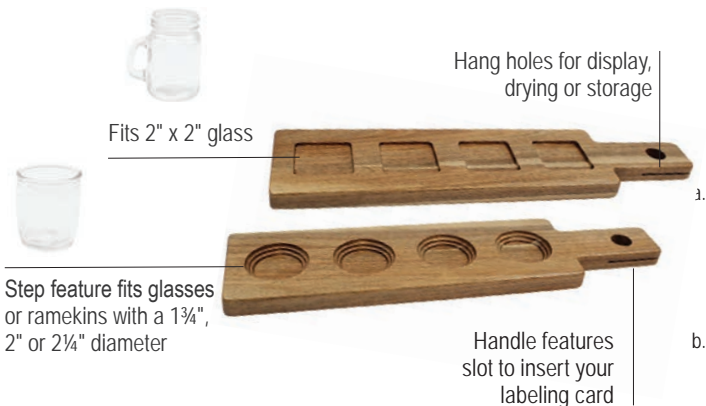
Item #	Description	Min Order/ Case Pack
ACACIA, BAMBOO & BLACK PAINTED WOOD		
f. RACA300	Acacia	1 set
g. RBAM300	Bamboo	1 set
h. RBK300	Black	1 set



h

PADDLE & DESSERT FLIGHTS

Fun ways to serve samples of beers, cocktails, sauces or appetizers



Enjoy Your flight



Serve multiple dipping sauces in ramekins for wings, etc. (RAM2RDB)

PADDLE FLIGHTS

- Reversible for use with FLBEER4 or FLGLASS4 (glasses sold separately)



Item #	Description	Min Order/ Case Pack
BAMBOO OR ACACIA		
a. FLIGHT1	Bamboo Flight, Holds 4 Glasses 17 x 4 x 5/8"	1 ea / 10 ea
FLIGHT2	Acacia Flight, Holds 4 Glasses, 17 x 4 x 5/8"	1 ea / 10 ea
GLASSES AND RAMEKIN OPTIONS FOR PADDLE FLIGHTS		
b. RAM2RDB	2 oz Round Ramekin, Bone	1 ea / 12 ea

DESSERT FLIGHTS

- Jars feature clip-top lids and are perfectly sized for serving shareable sides, sauces, appetizers or desserts



Item #	Description	Min Order/ Case Pack
GLASS & WOOD		
c. HFLGLASS5	(5) 2.4 oz Jars with Crate, Set, 11 1/2" x 3 x 3 3/4"	4 ea
d. BAMSP425	Disposable Wood Tasting Spoons, 4 1/4" (100 Per Pack)	12 pk
REPLACEMENT PARTS & ACCESSORIES		
HFLGLASS5G	Gasket for 2.4 oz Jar with Clip Top Lid (HFLGLASS5)	1 ea / 500 ea

STORAGE CANISTERS

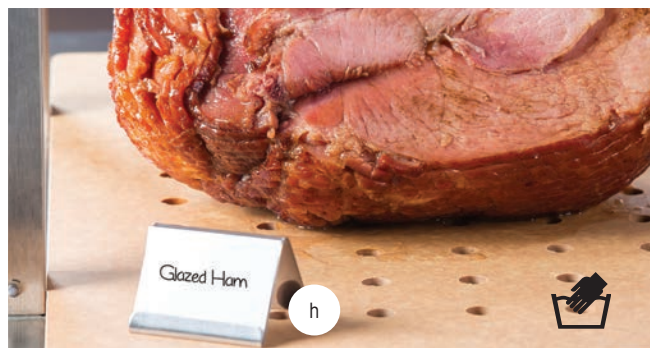
- Set of 3 glass canisters, with varying capacities, includes Stainless Steel measured scoops (1 Tablespoon)
- Also sold as individual canisters (scoops not included)



Item #	Description	Min Order/ Case Pack
GLASS		
e. *HGSET3	(3) Canister Set with Clip-Top Lids w/Scoops, 25, 34 & 50 oz	1 ea / 2 ea
f. 10366	Resealable Canister with Clip-Top Lid, 25 oz	1 ea / 6 ea
g. 10367	Resealable Canister with Clip-Top Lid, 34 oz	1 ea / 6 ea
h. 10368	Resealable Canister with Clip-Top Lid, 50 oz	1 ea / 6 ea

Follow the **signs**

Make seating, serving and buffet identification simple with our wide variety of number signs, tents and card holders. We offer a variety to complement any style or décor.



B17 design includes lip to hold customized cards (cards not included)



Melamine tents are square on one side and curved on the other. Flip them over to customize the look of your display.

NUMBER SIGNS

- Numbers printed on both sides



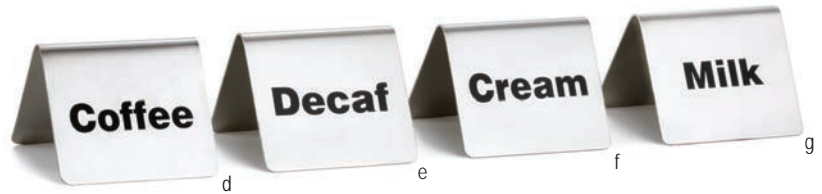
Item #	Description	Min Order/ Case Pack
STAINLESS STEEL OR PLASTIC		
a. N150	4" Numbers 1-50, Stainless Steel	1 set / 4 sets
TN100	4" Numbers 1-100, Plastic	1 set / 50 sets

NUMBER TENTS

- Numbers on both sides
- TC125 and TC150 are also an oven safe solution for marking pizzas



Item #	Description	Min Order/ Case Pack
STAINLESS STEEL		
b. TC125	Cut-Out Tents 1-25, 2½ x 2"	1 set / 8 sets
TC150	Cut-Out Tents 1-50, 2½ x 2"	1 set / 4 sets
c. T150	Numbers 1-50, 2½ x 2"	1 set / 4 sets



BUFFET TENTS

- Color-code your buffet for allergen, vegetarian and vegan identification and more

Item #	Description	Min Order/ Case Pack
STAINLESS STEEL		
d. B1	Coffee, 2½ x 2"	1 ea / 25 ea
e. B2	Decaf, 2½ x 2"	1 ea / 25 ea
f. B6	Cream, 2½ x 2"	1 ea / 25 ea
g. B5	Milk, 2½ x 2"	1 ea / 25 ea
B7	Hot Water, 2½ x 2"	1 ea / 25 ea
h. B17	Card Holder, 2½ x 1¼"	1 ea / 200 ea
MELAMINE		
i. M10BK	Black, 3½ x 2½ x 2"	1 ea / 12 ea
j. M10GN	Green, 3½ x 2½ x 2"	1 ea / 12 ea
k. M10W	White, 3½ x 2½ x 2"	1 ea / 12 ea
PORCELAIN		
l. P16	Plain, 3½ x 2"	1 ea / 6 ea



For use with our chalkboard (CBP2WH) or dry erase pens.



MAGNETIC CARD SIGN HOLDERS



Item #	Description	Min Order/ Case Pack
ACRYLIC		
a. A362	Rectangular, 4 x 1½ x 2½"	1 ea / 12 ea
ACHS46	Slanted Rectangular, 3¾ x 6 x 1½"	1 ea / 12 ea



a

CARVED MENU HOLDERS



Item #	Description	Min Order/ Case Pack
ACRYLIC		
b. AS57	5½ x 8½ x 4" (Fits a 5½ x 8½ Sheet)	1 ea / 24 ea
c. AS811	11¾ x 8½ x 4½" (Fits a 8½ x 11 Sheet)	1 ea / 12 ea
d. AS46	4 x 4½ x 7" (Fits a 4 x 6" Sheet)	1 ea / 24 ea



b

c

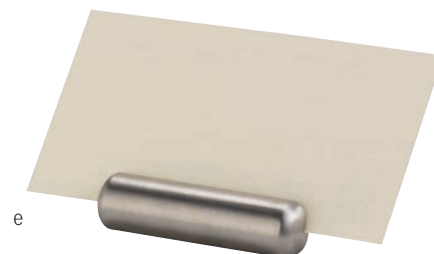
STAINLESS STEEL CARD HOLDERS



Item #	Description	Min Order/ Case Pack
STAINLESS STEEL		
e. 795	Bullet Card Holder, 2 x ½"	1 ea / 100 ea
f. RCH21	Card Holder, 2 x 1¼"	1 ea / 6 ea
RCH41	Card Holder, 4 x 1"	1 ea / 6 ea
g. RCW41	Wavy Card Holder, 3¾ x 1½ x ¾"	1 ea / 6 ea



d



e

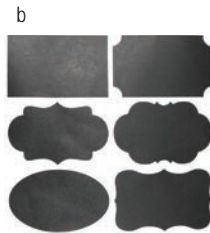


f



g





CHALKBOARD CLIP & LABELS



Item #	Description	Min Order/ Case Pack
CHALKBOARD WITH CLOTHESPIN CLIP		
a. BAMBCBP	3 x 2½" (6 per pack)	1 pk / 12 pk
CHALKBOARD LABEL		
b. CBSLA12	Assorted, 48 per pack	1ea / 12 ea

BUFFET TAGS



Item #	Description	Min Order/ Case Pack
c. CBTSS3	Stainless Steel Tag with Chalkboard, 3 x 1¾" (6 per pack) Chalk Not Included	1 pk / 12 pk
d. 40001	Hanging Buffet Tag / Card Holder, Black Powder Coated, 3½ x 2¾ x ½"	1ea / 12 ea

BUFFET PLAQUES, EASELS & CARD HOLDERS

- Bring a charming vintage feel to your buffet with these easy-to-use easels and plaques
- Small easels fit with your choice of shaped chalkboards
- Easels also fit standard 3½ x 2" cards for additional labeling options



Item #	Description	Min Order/ Case Pack
CHALKBOARD PLAQUES AND PENS		
e. 12000	Plaque, Rectangle, 3½ x 2", 6 per Pack	1 pk / 12 pk
f. 12001	Plaque, Oval, 3½ x 2", 6 per Pack	1 pk / 12 pk
g. 12002	Plaque, Marquee, 3½ x 2", 6 per Pack	1 pk / 12 pk
h. 12003	Plaque, Decorative, 3½ x 2", 6 per Pack	1 pk / 12 pk
CBP2WH	Chalkboard Pens, White, 2 per Pack	1 pk / 24 pk
BUFFET EASELS—WOOD, POWDER COATED OR ACRYLIC		
i. 12005	Card Holder Easel, Pine Wood, 3½ x 1¾ x 3¾", 2 per Pack	1 pk / 12 pk
j. 12004	Card Holder Easel, Black Powder Coated, 3½ x 1¾ x 3¾", 2 per Pack	1 pk / 12 pk
k. 12006	Card Holder Easel, Acrylic, 3½ x 3½", 2 per Pack	1 pk / 12 pk

CARD & NUMBER HOLDERS



Item #	Description	Min Order/ Case Pack
BLACK POWDER COATED METAL		
a. BKB8	8" Branch	1 ea / 12 ea
b. BKB12	12" Branch	1 ea / 12 ea
BK1908	8" Stand with Flat Bottom	1 ea / 12 ea
c. BK1912	12" Stand with Flat Bottom	1 ea / 12 ea
BK1915	15" Stand with Flat Bottom	1 ea / 12 ea
BK1918	18" Stand with Flat Bottom	1 ea / 12 ea
BKC2202	2" Stand with Clip	1 ea / 12 ea
BKC2206	6" Stand with Clip	1 ea / 12 ea
d. BKC2208	8" Stand with Clip	1 ea / 12 ea
BKC2212	12" Stand with Clip	1 ea / 12 ea
CHROME PLATED METAL, FLAT BOTTOM		
e. 1908	8" Chrome Plated	1 ea / 20 ea
1912	12" Chrome Plated	1 ea / 20 ea
1918	18" Chrome Plated	1 ea / 20 ea
STAINLESS STEEL, PLASTIC, NICKEL PLATED, OR BAMBOO		
f. CH2	3½" Circle Clip, Stainless Steel	1 ea / 12 ea
g. CHX8	8½" Double-Sided Clip, Steel	1 ea / 12 ea
h. BFCH4	4" Fork Card Holder, Stainless Steel	12 ea
i. 4CHSBK	4" Square Clip, Black, Plastic	1 ea / 12 ea
j. 4CHS	4" Square Clip, Silver, Plastic	1 ea / 12 ea
k. 5CHBAM	5" Square, Bamboo, Metal Clip	12 ea
l. CHX4	4½" Double-Sided Clip, Steel	1 ea / 12 ea
m. 2504	4" Harp Clip, Stainless Steel	1 ea / 6 ea
2508	8" Harp Clip, Stainless Steel	1 ea / 6 ea
2512	12" Harp Clip, Stainless Steel	1 ea / 6 ea
n. 1306	6" Card Holder, Stainless Steel Deluxe	1 ea / 6 ea
o. 596	2" Card Holder, Heavy Nickel Plated	2 ea



Ships from Gurnee, IL 60031

World Headquarters: 801 Lakeside Drive, Gurnee, Illinois 60031
 p: 847.855.9000 | f: 847.855.9012 | Customer service: 800.323.8321
 info@tablecraft.com www.tablecraft.com facebook.com/tablecraft

