



We put space to work.

Item # _____

Job _____



Stem Casters — Super Erecta

Metro® Stem Casters - Super Erecta®

Metro Stem-Type Casters are designed to fit Super Erecta® Shelf posts to form shelf carts and other mobile units. Bumpers are included with most casters as noted.

Plated Casters with High Modulus treads

- Non marking high modulus donut tread and polyolefin hub. Plated horns, stems, axles, and brakes (optional) are appropriate for dry environments and for medium duty applications. Ball bearing swivel and axle. NSF listed. Bumpers included. Brake style: pedal brake.
- TPR tread (70 shore): Quieter than polyurethane and resilient rubber caster options.

Wheel Diameter (in.) (mm)		Face (in.) (mm)		Load Rating (lbs.) (kg.)		Type	Wheel Tread	Temperature range (Continuous usage) (Fahrenheit) (Celsius)		Apprx. Pkd. Wt. (lbs.) (kg.)		Super Erecta Cat. No.
5	127	1.25	32	250	113	Stem/Swivel	High Modulus Donut	-20° - 180°	-29° - 82°	2.1	1.0	5MDA
5	127	1.25	32	250	113	Stem/Brake	High Modulus Donut	-20° - 180°	-29° - 82°	2.3	1.0	5MDBA
5	127	1.25	32	250	113	Stem/Rigid	High Modulus Donut	-20° - 180°	-29° - 82°	2.1	1.0	5MDRA

Note: Rigid connecting channel (stainless steel): Cat. No. 14RS, 18RS, 21RS, 24RS, 30RS, or 36RS.



5MDA



5MDBA



5MDRA

For all rigid casters.

Rigid stem casters improve tracking and handling of mobile units over long distances. Rigid caster channels are selected at the time of order.

How to Order:

Order (2) Rigid Casters

Select Rigid Channel based on the depth of the shelving. (Provided at no charge)

Bumpers included with each caster.



Plated Casters with Polyurethane Tread

- Chrome plated horns, stems, axles, and brakes (optional) are appropriate for dry environments and for medium duty applications. Non marking polyurethane flat tread and polyethylene hub. Ball bearing swivel and axle. NSF listed. Bumpers included. Brake style: side brake.

Wheel Diameter (in.) (mm)		Face (in.) (mm)		Load Rating (lbs.) (kg.)		Type	Wheel Tread	Temperature range (Continuous usage) (Fahrenheit) (Celsius)		Apprx. Pkd. Wt. (lbs.) (kg.)		Cat. No.
5	127	1.25	32	300	135	Stem/Swivel	Polyurethane, Flat	-20° - 180°	-29° - 82°	2.4	1	5MP
5	127	1.25	32	300	135	Stem/Brake	Polyurethane, Flat	-20° - 180°	-29° - 82°	2.6	1	5MPB
5	127	1.25	32	300	135	Stem/Rigid	Polyurethane, Flat	-20° - 180°	-29° - 82°	2.1	1	5MPR
6	152	1.5	38	400	182	Stem/Swivel	Polyurethane, Flat	-20° - 180°	-29° - 82°	2.25	1.1	6MP
6	152	1.5	38	400	182	Stem/Brake	Polyurethane, Flat	-20° - 180°	-29° - 82°	2.5	0.9	6MPB
6	152	1.5	38	400	182	Stem/Rigid	Polyurethane, Flat	-20° - 180°	-29° - 82°	2.5	1	6MPR

Note: Rigid connecting channel (stainless steel): Cat. No. 14RS, 18RS, 21RS, 24RS, 30RS, or 36RS.



5MP



5MPB



5MPR



6MP



6MPB



6MPR

All Metro Catalog Sheets are available on our website: www.metro.com



InterMetro Industries Corporation
North Washington Street, Wilkes-Barre, PA 18705
Product Information. U.S. and Canada: 1.800.992.1776
Outside U.S. and Canada: www.metro.com/contactus

L02-041
Printed in U.S.A. 5/24

Information and specifications are subject to change without notice. Please confirm at time of order.

Copyright © 2024 InterMetro Industries Corp.

11.20

Stem Casters - Super Erecta

Plated Casters with resilient rubber treads

- Solid resilient rubber material. Plated horns, stems, axles, and brakes (optional) are appropriate for dry environments and for medium duty applications. Ball bearing swivel. NSF listed. Bumpers included. Brake style: side brake.
- “LD” models have a plated hub cover.

Wheel Diameter (in.) (mm)		Face (in.) (mm)		Load Rating (lbs.) (kg.)		Type	Wheel Tread	Temperature range (Continuous usage) (Fahrenheit) (Celsius)		Apprx. Pkd. Wt. (lbs.) (kg.)		Cat. No.
4	102	15/16	24	125	56	Stem/Swivel	Resilient Donut	-20° - 160°	-29° - 71°	1-1/2	0.6	4LD
						Stem/Brake	Resilient Donut	-20° - 160°	-29° - 71°	2	0.9	4LDB
						Stem/Swivel	Resilient Donut	-20° - 160°	-29° - 71°	2	0.9	5LD
						Stem/Swivel	Resilient, Flat	-20° - 160°	-29° - 71°	2.8	1.3	5M
						Stem/Brake	Resilient, Flat	-20° - 160°	-29° - 71°	3.0	1.4	5MB
						Stem/Rigid	Resilient, Flat	-20° - 160°	-29° - 71°	2.8	1.3	5MR

Note: Rigid connecting channel (stainless steel): Cat. No. 14RS, 18RS, 21RS, 24RS, 30RS, or 36RS.



Low Profile 3" Threaded Stem Casters - For Super Erecta

- Threaded stem installs into the base of a standard stationary post.
- Resilient rubber tread. Bumpers not included.

Wheel Diameter (in.) (mm)		Face (in.) (mm)		Load Rating (lbs.) (kg.)		Type	Wheel Tread	Temperature range (Continuous usage) (Fahrenheit) (Celsius)		Apprx. Pkd. Wt. (lbs.) (kg.)		Super Erecta Cat. No.
3	76	.94	24	100	45	Stem/Swivel	Resilient Rubber	-20° - 130°	-29° - 71°	1.0	0.45	3TM
						Stem/Brake	Resilient Rubber	-20° - 130°	-29° - 71°	1.1	0.50	3TMB



Stem Casters - Super Erecta

Polymer & Stainless Total-Guard Caster

- High rust protection: Reinforced nylon rig with Stainless Steel stem and hardware.
- Maintenance Free: Sealed swivel SS ball bearings and Delrin axle bearings.
- Swivel and Total Lock Brake options.
- Pedal brake locks the wheel and the swivel motion. More control than conventional stem casters with wheel brakes only.
- Non-marking Thermoplastic Elastomer [TPE] tread (70 shore) is quieter and more shock absorbent than a TPU tread.



Outer rig consists of rust proof polymers, reinforced nylon, TPE wheel, and Polypropylene wheel hub.

Wheel Diameter (in.) (mm)	Face (in.) (mm)	Load Rating (lbs.) (kg)	Type	Wheel Tread	Temperature range (continuous) (Fahrenheit) (Celsius)	Apprx. Pkd. Wt. (lbs.) (kg)	Super Erecta Model No.
5 127	1.25 32	250 113	Stem/Swivel	TPE, Flat	-20° - 120° -29° - 49°	1.7 0.8	5PSTE
5 127	1.25 32	250 113	Stem/Brake	TPE, Flat	-20° - 120° -29° - 49°	1.9 0.9	5PSTEB

Best uses...

- Best suited for use with MetroMax and Metroseal shelving
- Best tread for high humidity controlled environments
- Excellent Corrosion Resistance
- Excellent Chemical Resistance
- Best option for aquatic facilities (environments with high salt exposure)
- Low magnetism: Best option for MRI and RFID applications
- A good option for cart wash chamber cleaning processes.

Where not to use...

- Tread not suited for exposure to acids or petroleum based chemicals.



5PSTE
Swivel



5PSTEB
Total Lock

Standard Polymer Casters

- Basic corrosion protection: Reinforced nylon rig with chromate plated stem and swivel raceway
- Maintenance Free: Sealed swivel ball bearings and Delrin axle bearings
- Swivel, Total-Lock Brake, and Rigid options
- Pedal brake locks the wheel and swivel motion
- Non-marking polyurethane (TPU) tread
- Optional Models with built-in antimicrobial TPU tread

Wheel Diameter (in.) (mm)	Face (in.) (mm)	Load Rating (lbs.) (kg)	Type	Wheel Tread	Temperature range (continuous) (Fahrenheit) (Celsius)	Apprx. Pkd. Wt. (lbs.) (kg)	Super Erecta Model No.
5 127	1.25 32	300 135	Stem/Swivel	Polyurethane, Flat	-20° - 120° -29° - 49°	2.0 0.9	5PC
5 127	1.25 32	300 135	Stem/Brake	Polyurethane, Flat	-20° - 120° -29° - 49°	2.2 1.0	5PCB
5 127	1.25 32	300 135	Stem/Rigid	Polyurethane, Flat	-20° - 120° -29° - 49°	2.0 0.9	5PCR
5 127	1.25 32	300 135	Stem/Swivel	Polyurethane, Flat	-20° - 120° -29° - 49°	2.0 0.9	5PCM
5 127	1.25 32	300 135	Stem/Brake	Polyurethane, Flat	-20° - 120° -29° - 49°	2.2 1.0	5PCBM

Tread with built-in antimicrobial.

Note: Rigid connecting channel (aluminum): Cat. No. P14RC, P18RC, P21RC, P24RC, P30RC, or P36RC.

Best uses...

- Basic Corrosion Protection versus common industrial casters
- Good Chemical Resistance

Where not to use...

- Not suited for areas with spray sterilization processes on regular basis
- Not suited for high humidity controlled environments
- Not suited for high temperature cart wash chambers



5PC
Swivel



5PCB
Swivel & Brake



5PCM
Antimicrobial
Tread Swivel



5PCBM
Antimicrobial
Tread Swivel
Brake

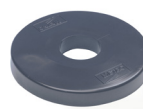
Stem Casters - Super Erecta

We put space to work.

Premium Type 304 Stainless Steel Casters

- Type 304 Stainless Steel Rig, Hardware and SS bearings.
- Non-marking Treads
- Swivel, Brake, and Rigid Options
- Pedal brake locks the wheel

Bumpers are included with each caster.



Polyurethane (TPU) Tread Models

Wheel Diameter (in.) (mm)	Face (in.) (mm)	Load Rating (lbs.) (kg)	Type	Wheel Tread	Temperature range (continuous) (Fahrenheit) (Celsius)	Apprx. Pkd. Wt. (lbs.) (kg)	Super Erecta Model No.
5 127	1.25 32	300 135	Stem/Swivel	Polyurethane, Flat	-20° - 180° -29° - 82°	2.2 1.0	5MPGSA
5 127	1.25 32	300 135	Stem/Brake	Polyurethane, Flat	-20° - 180° -29° - 82°	2.4 1.1	5MPBGSA
5 127	1.25 32	300 135	Stem/Rigid	Polyurethane, Flat	-20° - 180° -29° - 82°	2.2 1.0	5MPRGSA

Note: Rigid connecting channel (stainless steel): Cat. No. 14RS, 18RS, 21RS, 24RS, 30RS, or 36RS.



5MPGSA



5MPBGSA



5MPRGSA

Best uses...

- Best suited for high temperature cart wash chambers up to 180F (82C) when paired with Stainless Steel Shelving.
- Moving heavy loads regularly (90 shore TPU tread)
- High impact mobile uses (elevators, thresholds, ramps)
- Excellent Corrosion Resistance
- Excellent Chemical Resistance

Thermoplastic Rubber (TPR) Tread Models

Wheel Diameter (in.) (mm)	Face (in.) (mm)	Load Rating (lbs.) (kg)	Type	Wheel Tread	Temperature range (continuous) (Fahrenheit) (Celsius)	Apprx. Pkd. Wt. (lbs.) (kg)	Super Erecta Model No.
5 127	1.25 32	250 113	Stem/Swivel	TPR donut	-20° - 180° -29° - 82°	2.3 1.0	5MDGSA
5 127	1.25 32	250 113	Stem/Brake	TPR donut	-20° - 180° -29° - 82°	2.5 1.1	5MDBGSA
5 127	1.25 32	250 113	Stem/Rigid	TPR donut	-20° - 180° -29° - 82°	2.3 1.0	5MDRGSA



5MDGSA



5MDBGSA



5MDRGSA

Best uses...

- Best tread for high humidity controlled environments
- Excellent Corrosion Resistance
- Excellent Chemical Resistance
- Softer TPR donut tread (70 shore) is more shock absorbent than TPU

Where not to use...

- Tread not suited for exposure to acids or petroleum based chemicals.

Maintenance - Stainless Casters

- TPU tread swivel and swivel/brake models: Swivel raceway has a grease fitting. The axle has sealed bearings that do not require additional lubrication.
- TPR tread swivel and swivel/brake models: swivel raceway and axles have grease fittings. Rigid caster model has an axle with a grease fitting.
- User should determine the frequency of maintenance based on their usage conditions.

Stem Casters - Super Erecta

- **Swivel and Swivel/Brake casters** rotate a full 360 degrees for easy maneuvering.
- **Brakes:** Wheel brakes are foot operated.
- **Bumpers:** Non Phthalate vinyl material is strong yet flexible to protect walls from damage. Each caster, except where noted, includes a 3-1/2" (89mm) diameter bumper. Optional 5" (127mm) diameter bumpers are available.
- **Weight Load Capacity** of a cart (evenly distributed): Caster Load Rating x 3.
- **TableWorx** All casters in this spec sheet (Except 3TM and 3TMB on Page 2) are compatible with the larger 1-5/8" diameter mobile-ready TableWorx posts, which feature built-in adapters.

Caster Wheel Material Guide

Caster Tread	Grease/Oil Resistance	Floor Protection	Load Rating	Key Advantage
Resilient Rubber	Low	High	200 lbs. (90kg)	Basic mobility.
High Modulus Rubber	High	High	250 lbs. (113kg)	Quieter than resilient rubber and polyurethane. Well suited for environments with constant exposure to moisture and/or high humidity.
Polyurethane	High	High	300 lbs. (135kg)	Easiest to move heavy loads.

Replacement Bumpers

Non Phthalate Vinyl

Diameter (in.)	Diameter (mm)	Height (in.)	Height (mm)	Super Erecta Cat. No.
3.5	89	.75	19	9992DB
5.5	140	.81	21	9992N

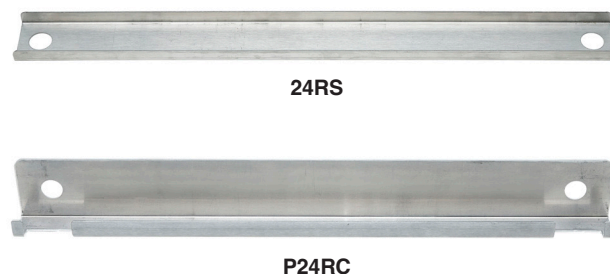


Rigid Caster Channels

- Typically used opposite two swivel style casters to create carts that are easy to steer over long distances.

Note: A type 304 stainless rigid caster channel is included at no charge with each two rigid plated or SS casters. An aluminum rigid channel is included with each two polymer horn rigid casters (model 5PCR).

For shelf depth (in.)	(mm)	Cat. No.	(For use with 5PCR) Cat. No.
14"	355	14RS	P14RC
18"	457	18RS	P18RC
21"	530	21RS	P21RC
24"	610	24RS	P24RC
30"	760	30RS	P30RC
36"	910	36RS	P36RC



All Metro Catalog Sheets are available on our website www.metro.com.

an Ali Group Company



The Spirit of Excellence