



Project \_\_\_\_\_

Item 522EBTB3060D Quantity \_\_\_\_\_

Approval \_\_\_\_\_ Date \_\_\_\_\_

# Steelton 30" x 60" 18-Gauge Type 430 Stainless Steel Enclosed Base Sliding Door Table with Midshelf and 6" Backsplash

Item #522EBTB3060D

## Special Features

- Durable 18-gauge type 430 stainless steel top and body
- Large 30" x 60" worktop includes a 6" backsplash
- Enclosed base provides concealed storage
- Welded-in stainless steel midshelf maximizes the storage capacity
- 2 sliding doors include recessed handles

## Technical Data

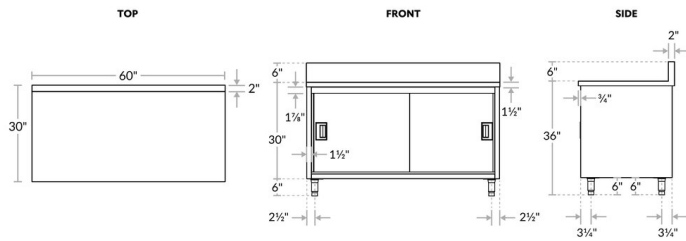
<b>Length</b>	60 Inches
<b>Width</b>	30 Inches
<b>Height</b>	42 Inches
<b>Backsplash Height</b>	6 Inches
<b>Backsplash</b>	With Backsplash
<b>Color</b>	Silver
<b>Door Style</b>	Sliding
<b>Features</b>	Corrosion-Resistant With Midshelf
<b>Gauge</b>	18 Gauge



## Technical Data

<b>Leg Construction</b>	Stainless Steel
<b>Material</b>	Stainless Steel
<b>Number of Doors</b>	2 Doors
<b>Number of Legs</b>	4 Legs
<b>Stainless Steel Type</b>	Type 430
<b>Table Style</b>	Enclosed Base
<b>Tabletop Material</b>	Stainless Steel
<b>Top Capacity</b>	625 lb.
<b>Type</b>	Work Tables

## Technical Drawing



**⚠ WARNING:** This product can expose you to chemicals including lead, which are known to the State of California to cause cancer and birth defects or other reproductive harm. For more information, go to [www.p65warnings.ca.gov](http://www.p65warnings.ca.gov).