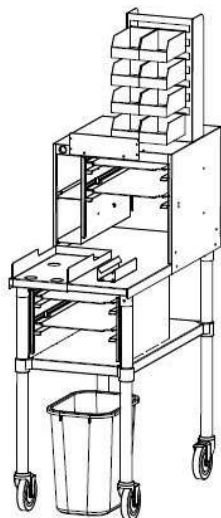




Your Solutions Partner

DUKE MANUFACTURING CO.
2305 N. Broadway
St. Louis, MO 63102
800.735.3853 Toll Free 314.231.5074 Fax
www.dukemfg.com



Must be purchased with DD18EXPEDITE-APOD

MODEL:

Expedite Table - Dunkin' Donuts

DD18EXPEDITE-APOD

Universal Flow

BODY:

- 6" Locking Casters
- Intermediate shelf for storage
- Stainless steel top with stainless steel legs and lower shelf

ACCESSORIES (Included):

- Waste can
- Removable hash brown holder capacity (3 bags)
- Expeditor Overshelf, including a printer shelf with upright condiment bins, a bag storage shelf, and smallwares storage bins.

DD18EXPEDITE-APOD

DIMENSIONS:

	Installed			Shipping Weight
Model	Height	Width	Depth	
DD18EXPEDITE-APOD	68-1/2"	18-1/8"	36"	135 lbs

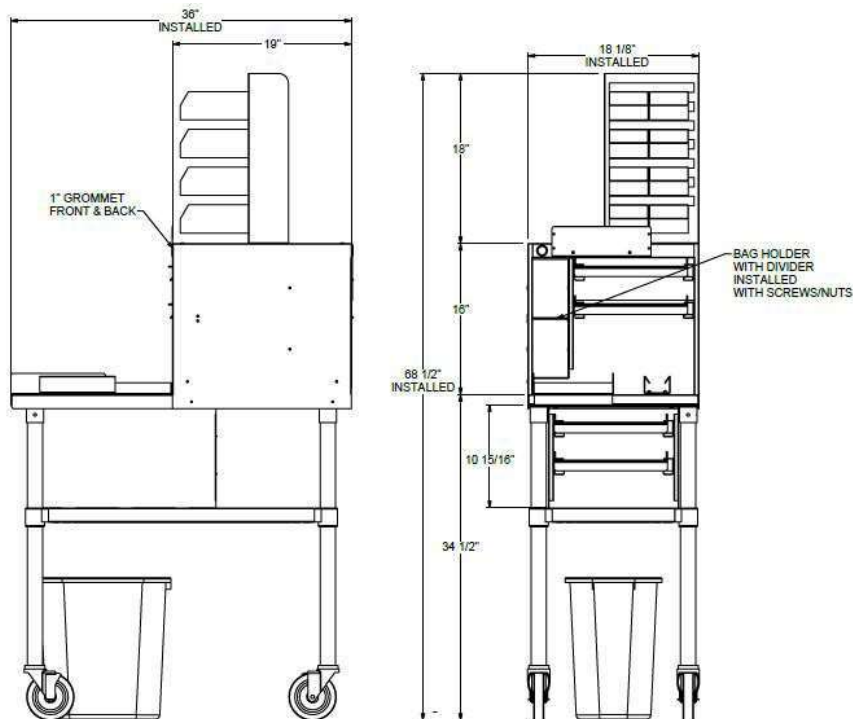
- A. UNIVERSAL FOR LEFT OR RIGHT USE
- B. REMOVABLE HASH BROWN HOLDER CAPACITY (3)
- C. INTERMEDIATE SHELF FOR STORAGE
- D. TRASH CONTAINER

4 carrier pan supporters w/built in covers

Pans not included:

4 12x18x3.5" clear acrylic

AGENCY LISTINGS:



Specification subject to change



WARNING For CA residents: go to www.dukemfg.com/prop65 for prop 65 warning