



# BEVERAGE-AIR®

Project: _____	AIA# _____
Item: _____	
Location: _____	SIS# _____
Approved: _____	

**DW94HC DEEP WELL SERIES: HORIZONTAL BOTTLE COOLERS**

## HORIZONTAL BOTTLE COOLERS

DW94HC Deep Well Series  
Hydrocarbon Series

MODEL:  
DW94HC-B



**7 Year Parts/Labor Warranty  
7 Year Compressor Warranty**

### CABINET CONSTRUCTION

- Exterior features durable black painted steel
- Galvanized steel interior and floor
- Full electronic control
- Tops include easy glide, stainless steel lids (4)
- Stainless steel countertop with integral glass stops
- Six (6) epoxy coated adjustable wire dividers
- Bottle opener and cap catcher standard
- Constructed with high cooling RPM fans to provide fast cooling

### OPTIONS & ACCESSORIES

- Stainless steel interior
- Wire divider
- Lid locks
- 3" Casters or 6" adjustable leg with plate
- Remote option\* (see note on back on page)

### REFRIGERATION SYSTEM

- Refrigeration system uses R290 refrigerant to comply with all environmental concerns
- Automatic, non-electric defrost
- Epoxy coated evaporator coil
- Forced air refrigeration system holds product between 36°- 40°F



Please verify qualifying units by visiting:  
[www.energystar.gov/cfs](http://www.energystar.gov/cfs)

3779 Champion Blvd., Winston-Salem, NC 27105  
1-888-845-9800 Fax: 1-336-245-6453  
Beverage-Air.com Sales@bevair.com



# BEVERAGE-AIR®

MODEL	DW94HC-B
<b>EXTERNAL DIMENSIONAL DATA</b>	
Width Overall	95"
Depth Overall	26 <sup>5</sup> / <sub>8</sub> "
Depth Overall with Cap Catcher	27 <sup>1</sup> / <sub>8</sub> "
Height Overall	33 <sup>3</sup> / <sub>4</sub> "
Number of Lids	4
<b>INTERNAL DIMENSIONAL DATA</b>	
NET Capacity (cubic ft.)	28.63
Internal Width Overall (in)	90"
Internal Depth Overall (in)	22 <sup>3</sup> / <sub>4</sub> "
Internal Height Overall at Step (in)	16 <sup>3</sup> / <sub>4</sub> "
Internal Height Overall (in)	26 <sup>3</sup> / <sub>4</sub> "
Number of Dividers	6
12 oz. Bottle Capacity	39 Cases
12 oz. Can Capacity	55 <sup>3</sup> / <sub>4</sub> Cases
<b>ELECTRICAL DATA</b>	
Full Load Amperes	2.5
<b>REFRIGERATION DATA</b>	
Horsepower	1/4
Capacity (BTU/Hr)	1702
Heat Rejection (BTU/Hr)	2553
Charge (lbs/grams/ounces)	0.2094 / 95 / 3.35
<b>SHIPPING DATA</b>	
Gross Weight - Crated	468 lbs
Height - Crated	41"
Width - Crated	98"
Depth - Crated	29"

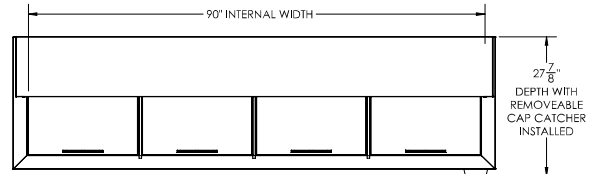
\*NOTE: Remote units are field wired and come with 6" legs.  
Refrigerant must be specified at time of order.

We reserve the right to change specifications and product design without notice. Such revisions do not entitle the buyer to corresponding changes, improvements, additions or replacements for previously purchased equipment. Dimensional tolerances +/- 1/4". Metric dimensions (MM).

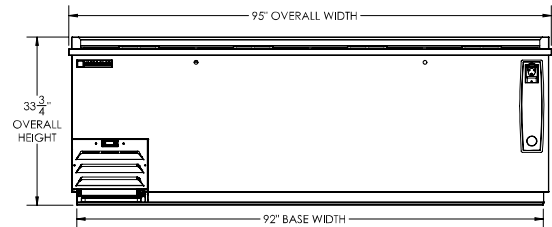
## Horizontal Bottle Coolers - Deep Well Model: DW94HC-B

### Model Views

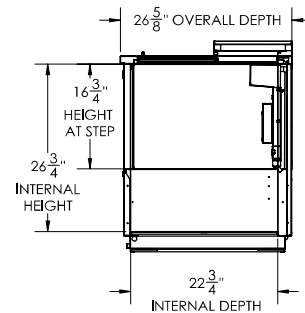
Required Clearance: 3" Sides & Rear



### PLAN VIEW



### ELEVATION VIEW



### SIDE VIEW



### ELECTRICAL CONNECTION



115/60/1  
NEMA 5-15P

Unit pre-wired at factory  
and include 8' long cord  
and plug set.

3779 Champion Blvd., Winston-Salem, NC 27105 1-888-845-9800 Fax: 1-336-245-6453 Beverage-Air.com Sales@bevair.com

