



BEVERAGE-AIR®

| | |
|-----------------|------------|
| Project: _____ | AIA# _____ |
| Item: _____ | |
| Location: _____ | SIS# _____ |
| Approved: _____ | |

SPE60HC SANDWICH PREP: MEGA TOP SERIES

FOOD PREPARATION TABLES

**SPE60HC Sandwich Prep Table Mega Top
Hydrocarbon Series**

**MODEL:
SPE60HC-18M**



**7 Year Parts/Labor Warranty
7 Year Compressor Warranty**

CABINET CONSTRUCTION

- Stainless steel front, sides, top, doors and grille (galvanized back & bottom)
- Interior liner is made of corrosion resistant aluminum
- Full electronic control
- Mega top
- Removable hoods made of matching stainless steel
- Self-closing doors with 120° Stay-open feature, on cartridge style hinges
- Easy door removal for service and cleaning
- Field-reversible doors (hinge kit not included)
- Snap-in magnetic gaskets for positive door seal
- Painted aluminum door handles
- 6" Casters, with (2) brakes standard
- 10" Wide cutting board constructed of white polyethylene plastic
- Cutting board removable for cleaning
- Four (4) epoxy-coated steel wire shelves
- Eighteen (18) 1/6 4" deep pans constructed of polycarbonate plastic

OPTIONS & ACCESSORIES

- Stainless steel back
- Stainless steel interior
- Clear lid
- Door locks
- Overshelves (single or double)
- Crumb catcher kit
- Richlite cutting board
- Night cover
- Epoxy coated shelves
- Shelf clips
- Shelf dividers
- Bottle organizer
- Bun rack
- Pan supports
- Pan support crossbar
- Pan configuration
- 6" Legs or 3" casters
- Low profile casters
- Remote option* (see note on back page)

REFRIGERATION SYSTEM

- Uses environmentally friendly, energy efficient R290 refrigerant, and meets all regulatory requirements for CARB, SNAP, DOE & more
- Adaptive defrost
- Epoxy coated evaporator coil
- Maintains product temperatures between 36° - 38°F



Please verify qualifying units by visiting:
www.energystar.gov/cfs

3779 Champion Blvd., Winston-Salem, NC 27105
1-888-845-9800 Fax: 1-336-245-6453
Beverage-Air.com Sales@bevair.com



BEVERAGE-AIR.

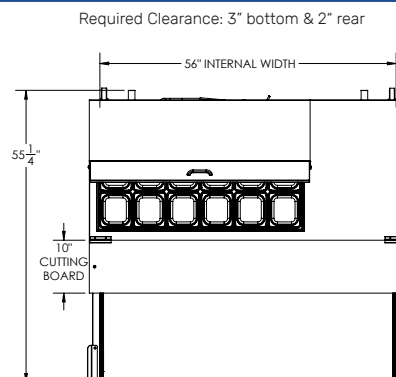
| MODEL | SPE60HC-18M |
|----------------------------------|---|
| EXTERNAL DIMENSIONAL DATA | |
| Width Overall | 60" |
| Depth Overall | 38 ³ / ₈ " |
| Height Overall with Casters | 49" |
| No. of Doors | 2 |
| Depth with Door Open 90° | 55 ¹ / ₄ " |
| Door Openings | 22 ⁵ / ₈ " x 21 ⁵ / ₈ " |
| Width, Cutting Board | 10" |
| INTERNAL DIMENSIONAL DATA | |
| NET Capacity (cubic ft.) | 16.02 |
| Internal Width Overall (in) | 56" |
| Internal Depth Overall (in) | 23 ³ / ₈ " |
| Internal Height Usable (in) | 17 ³ / ₄ " |
| No. of Shelves | 4 |
| No. of Pans | 18 |
| ELECTRICAL DATA | |
| Full Load Amperes | 5.4 |
| REFRIGERATION DATA | |
| Horsepower | 1/3 |
| Capacity (BTU/Hr) | 1549 |
| Heat Rejection (BTU/Hr) | 2323.5 |
| Charge (lbs/grams/ounces) | 0.2095 / 95 / 3.35 |
| SHIPPING DATA | |
| Gross Weight - Crated | 374 lbs |
| Height - Crated | 49" |
| Width - Crated | 63" |
| Depth - Crated | 38" |

*NOTE: Remote units are field wired and come with 6" legs.
Refrigerant must be specified at time of order.

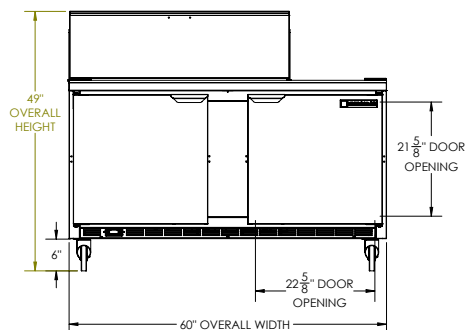
We reserve the right to change specifications and product design without notice.
Such revisions do not entitle the buyer to corresponding changes, improvements,
additions or replacements for previously purchased equipment. Dimensional
tolerances +/- 1/4". Metric dimensions (MM).

Food Preparation Table: Mega Top Model: SPE60HC-18M

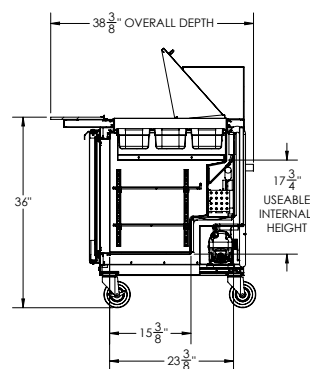
Model Views



PLAN VIEW



ELEVATION VIEW



SIDE VIEW



ELECTRICAL CONNECTION

115/60/1
NEMA 5-15P

Unit pre-wired at factory
and include 8' long cord
and plug set.

3779 Champion Blvd., Winston-Salem, NC 27105 1-888-845-9800 Fax: 1-336-245-6453 Beverage-Air.com Sales@bevaair.com

