



Outperform every day.™

Project:

Item Number:

Quantity:

One-Well Modular Hot Drop-ins with Marine Grade Well

The Vollrath Company, L.L.C.

## ONE-WELL MODULAR HOT DROP-INS WITH MARINE GRADE WELL



Bottom view

### DESCRIPTION

Vollrath's One-Well Modular Hot Drop-ins with Marine Grade Well keep hot foods at proper serving temperatures. They are designed for top-mount installation and do not require hard-wiring.

### SHORT DESCRIPTION

Single well hot-drop-in, full-size well is marine-grade stainless steel, removable bottom panel, standard or manifold drain, insulated on all non-exposed sides, cord with plug, stainless steel remote control panel, mounting clips.

**Note:** Orders for drop-ins cannot be canceled or returned.

**Note:** Drop-in meets NSF4 performance standards only when using moist heat. Operation with water is required for even heating of the food product.

Item Numbers		Description	
Standard Drain	Manifold Drain w/Auto-Fill	Control	Voltage
1000 Watts Per Well			
3646601HD	3646661HD	Infinite	120
3646611HD	3646681HD	Thermostatic	
3646701HD	3646761HD	Infinite	208- 240
3646711HD	3646781HD	Thermostatic	
625 Watts Per Well			
36466HD	3646660HD	Infinite	120
3646610HD	3646680HD	Thermostatic	
36467HD	3646760HD	Infinite	208
3646710HD	3646780HD	Thermostatic	
36471HD	3647160HD	Infinite	240
3647110HD	3647180HD	Thermostatic	

### FEATURES

- Drawn wells are marine grade stainless steel (SAE Type-316).
- Removable panel at the bottom of each well for service access
- Include gasket for under drip edge
- Standard drain is ½" (1.3 cm) with individual well ball valves
- Manifold drain is 1" (2.5 cm) copper tubing with master manifold shut off
- Insulated on all sides, including between each well
- Includes 6' (1.8 m) cord with plug. Does not require hard-wiring
- Stainless steel control panel with individual controls and power indicator light for each well
- Control panel has 4' (121.9 cm) tethered connection for flexible mounting locations
- Includes standard mounting clips for use on counters up to 3" (7.6 cm) thick for easy installation
- Accepts full-size and fractional pans up to 6" (15.2 cm) deep
- Adapter bars are recommended when using fractional pans

### WARRANTY

All models shown come with Vollrath's two-year warranty against defects in materials and workmanship. For full warranty details, please refer to [www.Vollrath.com](http://www.Vollrath.com).

### ACCESSORIES

- ☐ Sheet pan adapter available. Item No. 19186

### CLEARANCE AND ENVIRONMENT REQUIREMENTS

- Zero-clearance installation
- Indoor use only. Room temperature and HVAC can effect performance temperatures

### Agency Listings



Due to continued product improvement, please consult [www.vollrath.com](http://www.vollrath.com) for current product specifications.

Approvals	Date



Outperform every day.™

[www.vollrath.com](http://www.vollrath.com)

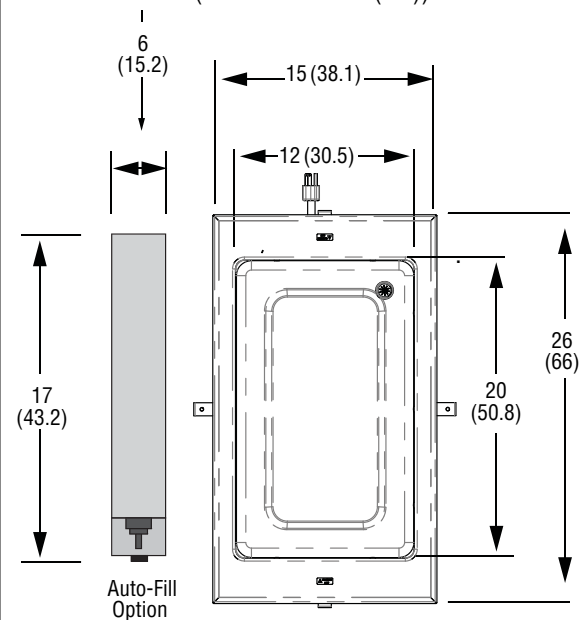
### The Vollrath Company, L.L.C.

1236 North 18th Street  
Sheboygan, WI 53081-3201 U.S.A.  
Main Tel: 800.624.2051 or 920.457.4851  
Main Fax: 800.752.5620 or 920.459.6573  
Customer Service: 800.628.0830  
Canada Customer Service: 800.695.8560

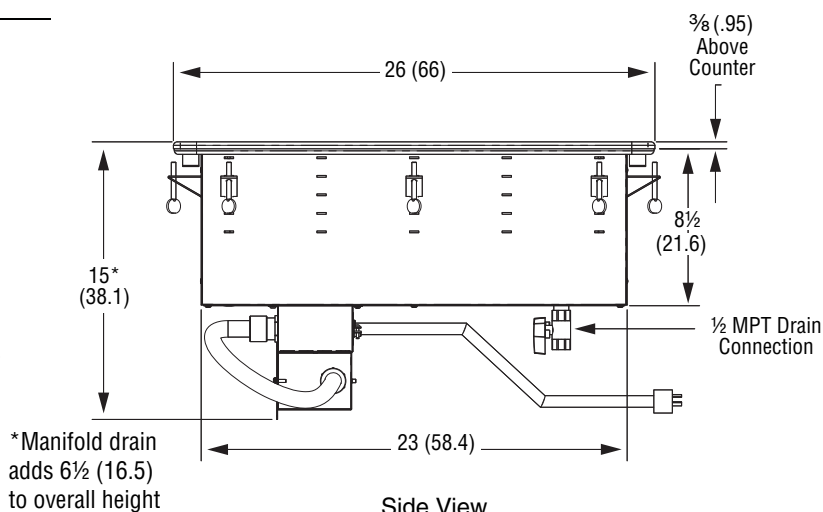
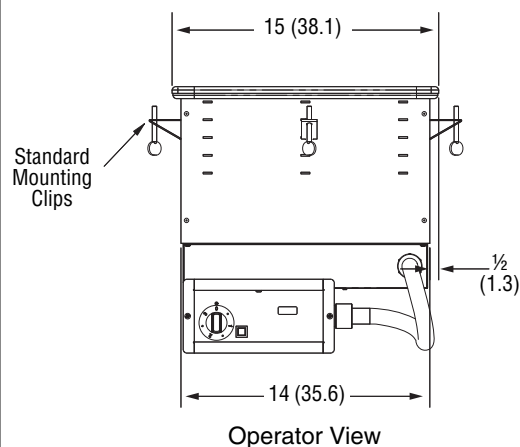
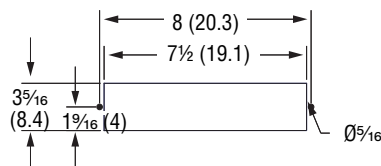
Technical Services  
[techservicereps@vollrathco.com](mailto:techservicereps@vollrathco.com)  
Induction Products: 800.825.6036  
Countertop Warming Products: 800.354.1970  
All Other Products: 800.628.0832

# ONE-WELL MODULAR HOT DROP-INS WITH MARINE GRADE WELL

## DIMENSIONS (Shown in inches (cm))



### Control Panel Cutout



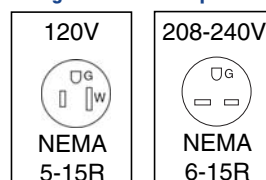
\*Manifold drain adds 6 1/2 (16.5) to overall height

## ELECTRICAL SPECIFICATIONS

Standard	Manifold w/ Auto-Fill	Control	Cutout Dimension IN (CM)	Voltage	Amps	Plug
1000 Watts Per Well						
3646601HD	3646661HD	Infinite	14¼ x 25¼ (36.2 x64.1)	120V	8.3	NEMA 5-15P
3646611HD	3646681HD	Thermostatic		208V - 240V	3.6-4.2	NEMA 6-15P
3646701HD	3646761HD	Infinite				
3646711HD	3646781HD	Thermostatic				
625 Watts Per Well						
36466HD	3646660HD	Infinite	14¼ x 25¼ (36.2 x64.1)	120V	5.2	NEMA 5-15P
3646610HD	3646680HD	Thermostatic		208V	3.0	NEMA 6-15P
36467HD	3646760HD	Infinite				
3646710HD	3646780HD	Thermostatic				
36471HD	3647160HD	Infinite		240V	2.6	
3647110HD	3647180HD	Thermostatic				

Note: Opening cutout must have a 7/8" (2.2 cm) corner radius.

### Straight Blade Receptacles



**NOTICE:** Do NOT modify the cord or plug on the drop-in. Modifying any component may damage the drop-in or cause injury, and will void the warranty.



Outperform every day.™

[www.vollrath.com](http://www.vollrath.com)

### The Vollrath Company, L.L.C.

1236 North 18th Street  
Sheboygan, WI 53081-3201 U.S.A.  
Main Tel: 800.624.2051 or 920.457.4851  
Main Fax: 800.752.5620 or 920.459.6573  
Customer Service: 800.628.0830  
Canada Customer Service: 800.695.8560

Technical Services  
techservice@vollrathco.com  
Induction Products: 800.825.6036  
Countertop Warming Products: 800.354.1970  
All Other Products: 800.628.0832