

**SOLANA**  
SOLA

# SOLANA

---

## SERIES

Designed for high-traffic outdoor spaces, the Solana Series Commercial-Grade Cantilever Patio Umbrella delivers expansive shade and lasting durability. Whether enhancing a restaurant patio, resort poolside, or corporate courtyard, this heavy-duty, fixed cantilever umbrella offers a sleek, modern solution for large-scale sun protection.

Solana Series provides wide-ranging coverage, ensuring guests stay comfortable in any outdoor setting. Unlike traditional market umbrellas, its 360° rotation allows for effortless shade adjustment throughout the day, maximizing usability without obstructing furniture layouts.

Built to withstand constant use, the oversized anti-corrosive aluminum mast ensures long-term resilience against sun, wind, and weather. The fixed, heavy base offers rock-solid stability, making it ideal for commercial environments where reliability is essential.



**Aluminum Center Mast**



**Crank Lift**



**12-Position Rotation**



**Wind Stabilizers**

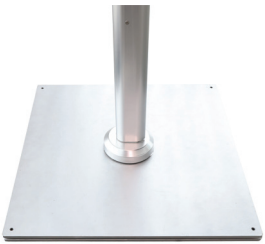
**CALIFORNIA  
UMBRELLA**

# SOLANA

SOLA



## FEATURES



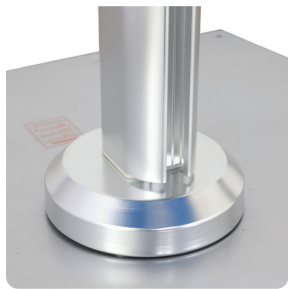
### Heavy-Duty Galvanized Base

Premium 340 lb ballast system for maximum stability. This dual-plate foundation ensures your umbrella remains secure and upright in any environment.



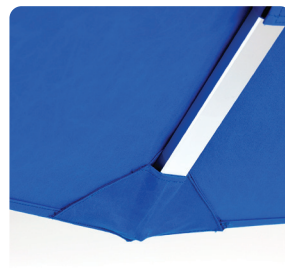
### Secure Wind Stabilizer

Channeled aluminum ribs engineered for the perfect balance of strength and flexibility. Enhances structural stability and reduces canopy sway in breezy conditions.



### 360 Degree Rotation

Precision swivel mechanism with 12 integrated locking positions. Provides effortless, full-circle adjustments to keep your canopy securely positioned as the sun moves.



### Reinforced Rib Pocket

Double-layered, industrial-strength sleeves built for high-tension performance. Protects the canopy from rib friction and stress to ensure long-term durability in breezy conditions.



### Optional Ground Anchor

High-strength steel sleeve for permanent landscape integration. Offers a sleek, low-profile mounting solution by securing the mast directly into your deck or patio.



### Crank Lift System

Precision gear system for effortless operation. Features a removable handle to prevent unauthorized use and ensure safety in high-traffic or commercial settings.

## FRAME FINISHES



Anodized

## FABRIC OPTIONS



## CONFIGURATION

---

**MODEL NAME**

SOLA118001-6004

**FRAME FINISH**

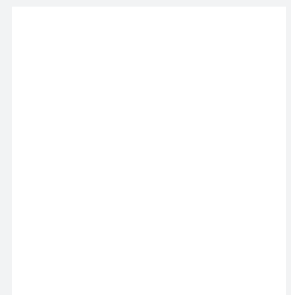
Anodized

**CANOPY STYLE**

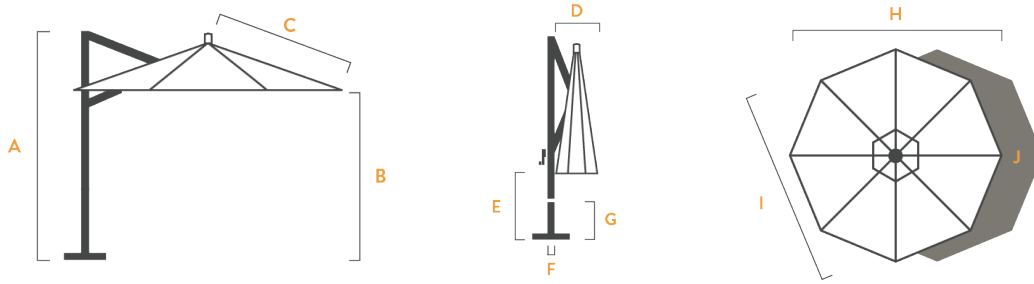
Single Wind Vent



**PRIMARY FABRIC**

Sunbrella Awning Natural 6004



# SPECIFICATIONS



SHAPES			
	MODEL NAME	SOLA118	SOLA338
SIZES	11FT x 8 RIBS	10FT x 10FT x 8 RIBS	
<b>A</b> (in/cm)	<b>OVERALL HEIGHT</b>	113 ¾ / 289	107 ½ / 273
<b>B</b> (in/cm)	<b>CANOPY CLEARANCE</b>	83 ⅙ / 211	85 ⅙ / 216
<b>C</b> (in/cm)	<b>RIB LENGTH</b>	68 ⅞ / 175	86 ¼ / 219
<b>D</b> (in/cm)	<b>PARASOL WIDTH</b>	9 ⅙ / 23	9 ¾ / 25
<b>E</b> (in/cm)	<b>TABLE CLEARANCE</b>	38 ¼ / 97	19 ¼ / 49
<b>F</b> (in/cm)	<b>POLE DIAMETER</b>	4 ¾ / 12	4 ¾ / 12
<b>G</b> (in/cm)	<b>BOTTOM POLE</b>	N/A	N/A
<b>H</b> (in/cm)	<b>CANOPY TIP TO TIP</b>	125 ⅜ / 318	165 ⅜ / 420
<b>I</b> (in/cm)	<b>CANOPY FLAT TO FLAT</b>	115 ¾ / 294	116 ½ / 296
<b>J</b> (ft²/m²)	<b>SHADE COVERAGE</b>	76.97 / 7.15	94.94 / 8.82
<b>K</b> (in/cm)	<b>BASE LENGTH</b>	36 / 90	36 / 90
<b>L</b> (in/cm)	<b>BASE WIDTH</b>	36 / 90	36 / 90
<b>M</b> (lb/kg)	<b>TOTAL WEIGHT</b>	428 / 194	428 / 194

Dimension Tolerances ± 2" / 5cm. Dimensions shown are rounded to the nearest inch/cm and correspond to indicated lift system. Options are subject to change without notice.