

SMP-6 & SMP-10 SURFACE MOUNTING PLATES

Stainless steel surface mounting plates are an option to assist with installation for Stern-Williams pedestal drinking fountains and bottle fillers. They provide for an in-ground anchor plate to make for a more rigid mounting. Smaller options are available for pet fountains and shower towers. Square options are available for aggregate fountains.



SMP-6 is used for models with a 6-5/8" DIA base.
SMP-10 is used for models with a 10-3/4" DIA base.

Shown: SMP-10

FEATURES

- Optional ground installed mounting plates to assist with installation
- Stainless steel plate is 1/4" thick
- Four 9/16" OD mounting bolts
- Mounting hardware included

ORDERING OPTIONS

Part Number

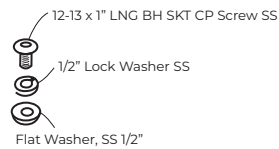
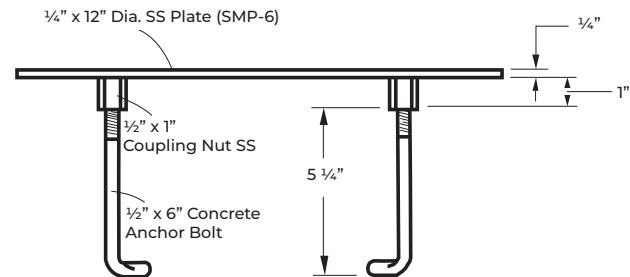
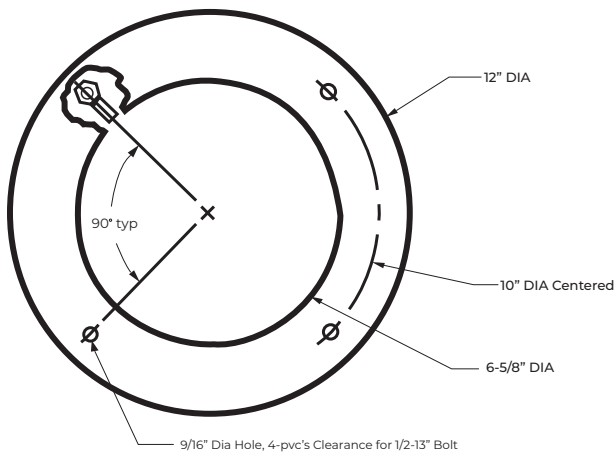
SMP-



Optional

- ☐ **-6:** All models with a 6-5/8" DIA base
- ☐ **-10:** All models with a 10-3/4" DIA base

SMP-6



SMP-10

