

# CHOCOVISION

14 Catharine St., Poughkeepsie, NY 12601  
Phone: (800) 324-6252 • Fax: (845) 473-8004  
www.chocovision.com

Project Name: \_\_\_\_\_

Model #: \_\_\_\_\_


Quantity: \_\_\_\_\_

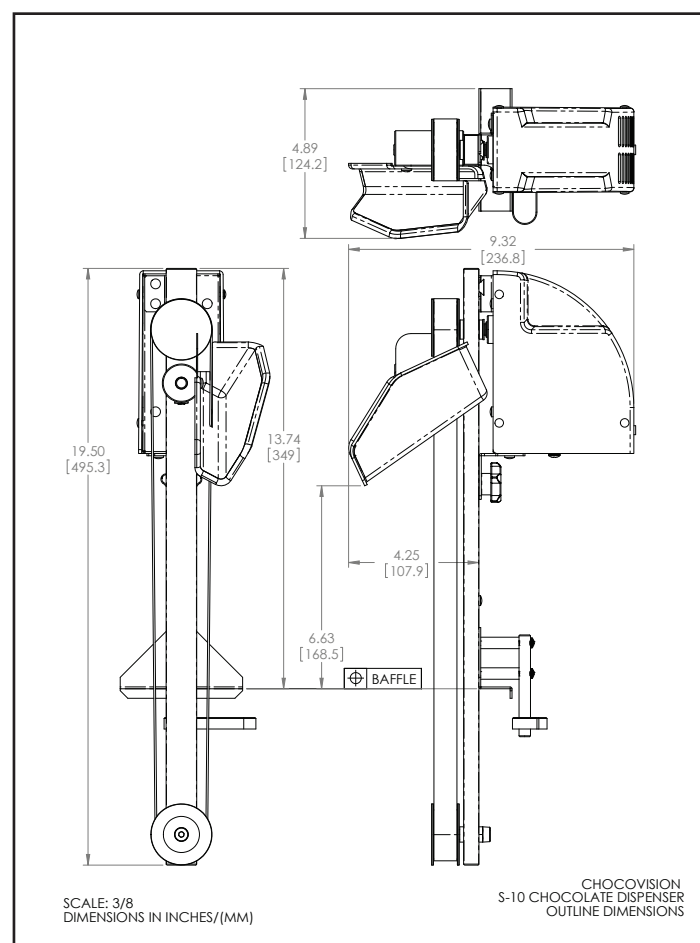
Model	Part #	Description
Skimmer 10	C116SKIMMER10	Continuous Chocolate Dispenser

## FEATURES

- Variable flow speed
- Durable urethane belt
- PET dispensing bucket
- Easy to disassemble for cleaning
- Designed for use with the Revolution Delta and (optional) Enrober 10 (***Sold separately***)

## SPECIFICATIONS

DIMENSIONS	Overall: 19.5"H (13.75" above baffle) x 4.9"W x 9.3"D	
WEIGHT	5 lbs.	
ELECTRICAL	110-240V (w/plug adapter), 20 watts, and 0.3 amps	
CORD	7 ft.	
PLUG TYPES	NEMA 5-15 (110V)	
CONTROLS	Variable Speed Knob	



**Warranty**  
One (1) Year Parts and Labor

**Environmental Parameters**  
Best results when ambient temperature  
is 68-72°F and humidity is below 50%



**Proudly Made  
in the USA**