



BEVERAGE-AIR®

PROJECT: _____
 ITEM # _____ QTY: _____
 MODEL # _____
 AIA # _____ SIS # _____
 APPROVED: _____

BAR EQUIPMENT - BOTTLE COOLERS

Model: SF34HC-B

SHALLOW WELL BOTTLE COOLER IN BLACK



7 YEAR WARRANTY
Parts, Labor, and Compressor

CABINET CONSTRUCTION

- Exterior features durable black painted steel
- Galvanized steel interior and floor
- Full electronic control
- Tops include easy glide, stainless steel lids (1)
- Stainless steel countertop with integral glass stops
- Two (2) epoxy coated adjustable wire dividers
- Bottle opener and cap catcher standard
- Constructed with high cooling RPM fans to provide fast cooling



OPTIONS & ACCESSORIES

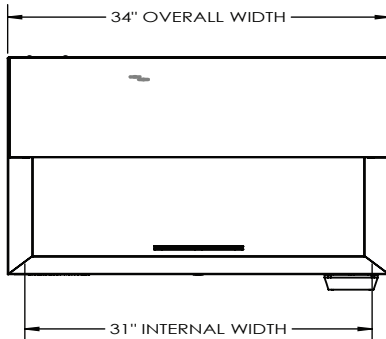
- Stainless steel interior
- Lid locks
- Remote option* (see note on back on page)

REFRIGERATION SYSTEM

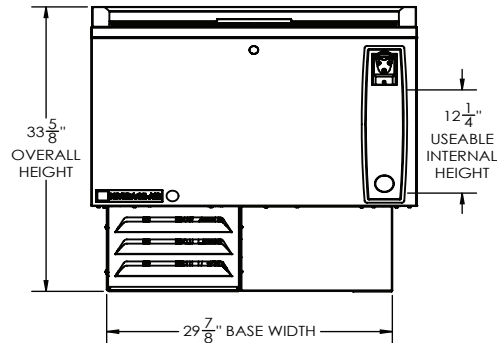
- Refrigeration system uses R290 refrigerant to comply with all environmental concerns
- Automatic, non-electric defrost
- Epoxy coated evaporator coil
- Forced air refrigeration system holds product between 36°- 40°F



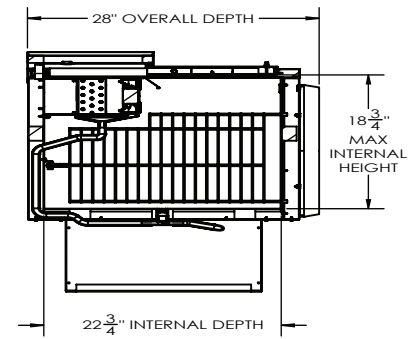
PLAN VIEW



ELEVATION VIEW



SIDE VIEW



EXTERNAL DIMENSIONAL DATA

Width Overall (in)	34"
Depth Overall (in)	28"
Depth with cap catcher (in)	
Height Overall (in)	33 ⁵ / ₈ "
Number of Lids	1

INTERNAL DIMENSIONAL DATA

NET Capacity (cubic ft.)	6.7
Internal Width Overall (in)	31"
Internal Depth Overall (in)	22 ³ / ₄ "
Internal Height Overall (in)	18 ³ / ₄ "
Number of Dividers	2
12 oz. Bottle Capacity	
12 oz. Can Capacity	

*NOTE: Remote units are field wired and come with 6" legs.
Refrigerant must be specified at time of order.

We reserve the right to change specifications and product design without notice. Such revisions do not entitle the buyer to corresponding changes, improvements, additions or replacements for previously purchased equipment. Dimensional tolerances +/- 1/4". Metric dimensions (MM).

ELECTRICAL DATA

Full Load Amps	1.2
Voltage	115/60/1
Nema Plug (8' cord)	5-15P

REFRIGERATION DATA

Horsepower	1/10
Capacity (BTU/Hr)	1110
Heat Rejection (BTU/Hr)	1665
Charge (lbs/grams/ounces)	0.1874 / 85 / 3.0

SHIPPING DATA

Gross Weight - Crated	210 lbs.
Height - Crated (in)	38"
Width - Crated (in)	41"
Depth - Crated (in)	30"

ELECTRICAL CONNECTION



115/60/1
NEMA 5-15P

Unit pre-wired at factory
and include 8' long cord
and plug set.