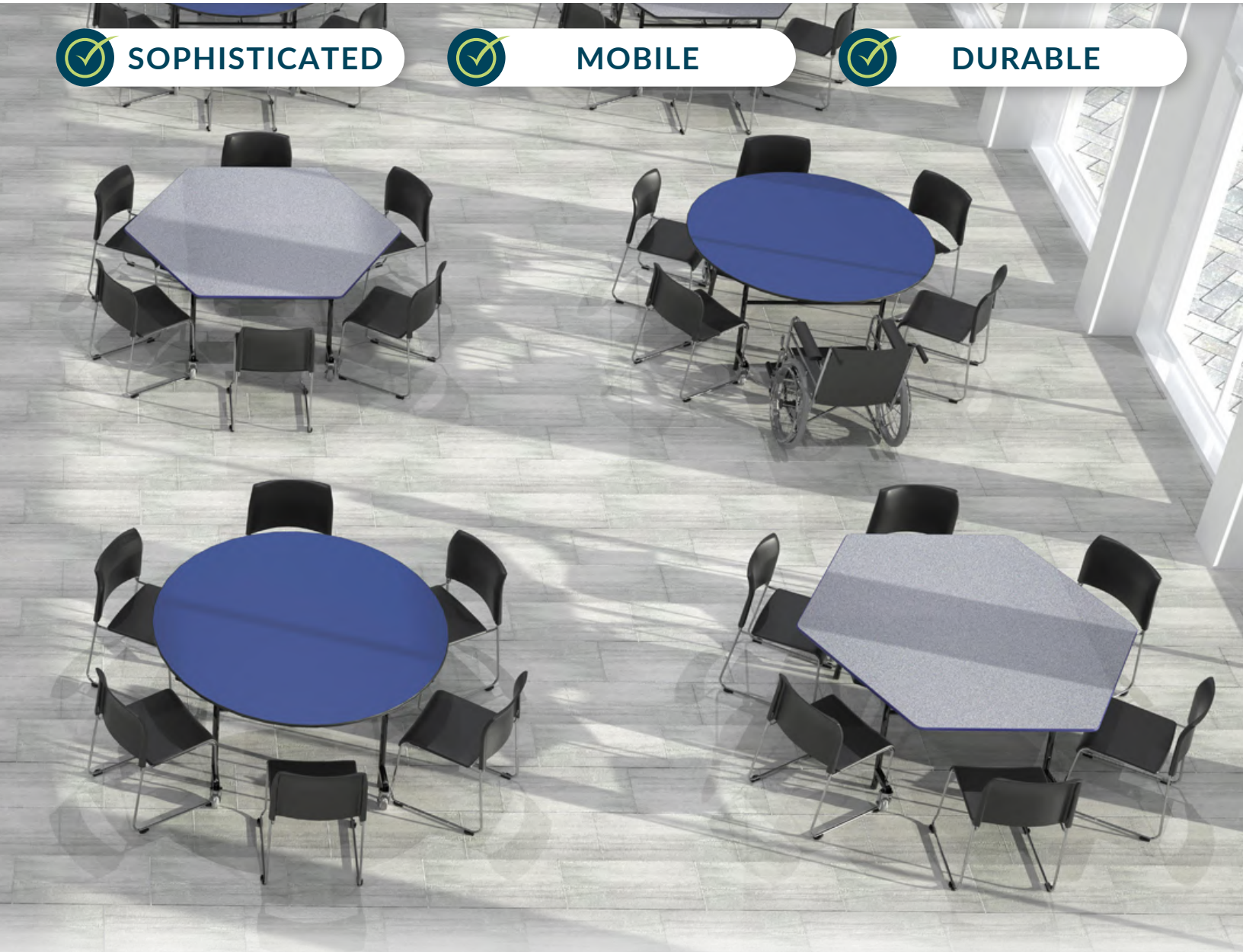


# EASY-FOLD UNITS

 SOPHISTICATED

 MOBILE

 DURABLE



## Shapes





## MTSSF-R Series | Round



Model #	Seats	Table WxL	Folded Dimensions	Table-Seat Height (Standard)	Table-Seat Height (Custom)
MTSSF-48R	4-6	48"x48"	48"x20"x62"	29"	25"   32"
MTSSF-60R	6-8	60"x60"	60"x20"x72"	29"	27"   42"

## MTSSF-V Series | Oval



Model #	Seats	Table WxL	Folded Dimensions	Table-Seat Height (Standard)	Table-Seat Height (Custom)
MTSSF-60V	6-8	60"x72"	72"x20"x72"	29"	25"   32" 27"   42"

## MTSSF-Q Series | Square



Model #	Seats	Table WxL	Folded Dimensions	Table-Seat Height (Standard)	Table-Seat Height (Custom)
MTSSF-48Q	4-6	48"x48"	48"x20"x62"	29"	25"   32"
MTSSF-60Q	6-8	60"x60"	60"x20"x72"	29"	27"   42"

## MTSSF-H Series | Hexagon



Model #	Seats	Table WxL	Folded Dimensions	Table-Seat Height (Standard)	Table-Seat Height (Custom)
MTSSF-48H	4-6	48"x48"	48"x20"x65"	29"	25"   32"
MTSSF-60H	6-8	60"x60"	60"x20"x72"	29"	27"   42"

## MTSSF-O Series | Octagon



Model #	Seats	Table WxL	Folded Dimensions	Table-Seat Height (Standard)	Table-Seat Height (Custom)
MTSSF-60O	6-8	60"x60"	60"x20"x72"	29"	25"   32" 27"   42"



## Features



One-Piece Top for a Seamless Gap-Free Tabletop



4" Double Ball Bearing Non-Marring Heavy-Duty Casters With 275 Lb. Weight Capacity Ea



Casters Lift off Floor to Prevent Table from Moving When Opened



Gas Spring Rated to 100,000 Cycles



Table Automatically Locks Open with Two Points of Manual Release to Fold



ProtectEdge Prevents Food From Being Trapped Between the Laminate and Edge



14-Gauge Steel Understructure and Legs



Tamper-Free, Non-Marring, Nylon Steel-Insert Glides and Tube Closures



**Tables Flip and Nest for Maximum Storage**

## Frame Color Options



Chrome (CR)



Black Powdercoating (PC)

## Table Core Options



[View our Laminate and Edge Design Options](#)



3/4" MDF (MD)



3/4" Particleboard (PB)



3/4" Plywood (PW)

## Shapes



Round (R)



Oval (V)



Square (Q)



Hexagon (H)



Octagon (O)

## Table Heights

25"  
code: 25

27"  
code: 27

29"  
**standard**

32"  
code: 32

42"  
code: 42

For non-standard heights add code to end of model number

## Model Number Configuration

Model Number	Core	Frame		
<b>MTSSF-48Q-MD</b>	<b>PE</b>	<b>CR</b>	<b>CH</b>	
	Edge	Laminate Color		

Add custom height and/or ADA code to the end of model number



DESIGNED, ENGINEERED & ASSEMBLED IN THE U.S.A.  
WITH GLOBAL MATERIALS



**7 DAY QUICK SHIP**

MTSSF-60R-MDPEPCGY  
(Round 60"x60", MDF Core, Black Protect Edge, Grey Nebula Top)

## Sophistication made Simple with Safety in mind.

NPS Mobile Tables are sophisticated in design yet simple to operate. Offering enhanced safety features giving you complete peace of mind.



**Frame Design** *Intelligent steel understructure design supports table tops and seating providing ease of operation and maintenance.*

### Table Top Apron Support

- Each top is supported by 2" deep, 14-gauge steel aprons capped at the ends with riveted plastic protectors.
- Aprons and brackets are fastened to wood with custom designed tamper-resistant screws with superior holding power while still easily serviceable if the need arises.
- Tops are supported between the leg top tubes and wood with spacers.

### Leg Assembly



- Structural leg components are comprised of 1½" diameter, 14-gauge steel tubing.
- Legs and stool columns are constructed of 1½" diameter, 14-gauge steel tubing and braced horizontally to the stool support column on the opposite side of the table to resist bending.

### Lock Rod



- Heavy duty 7/16" diameter lock rod is chrome plated to resist wear.
- Tamper resistant lock nuts on all down lock assemblies with a self-adjusting hinge lock ensure that the down lock engages every time.

### Storage Lock

- Heavy duty storage lock is comprised of a 1¼" square tube with heavy-duty catch. Locks automatically in storage position and easily release from either side of the table when opening.

## Table Top & Seats

### Core



- Available in MDF, Particleboard, or Plywood.
- Tops and benches are surfaced with high pressure laminate bonded to a 3/4" thick AC grade core, sealed underneath with a poly backer for T-molded tabletops and a phenolic backer sheet for tabletops with Protect Edge. This is especially helpful when cleaning the underside of the table.

### Edge (for table tops and benches)



- Available with Protect Edge or Vinyl T-Molding.
- Protect Edge is sealed with a polyurethane epoxy resin, chemically bound to the edge of the laminate, core and phenolic backing sheet.
- Vinyl T-molding is secured by staples to the top's underside approximately every 10".



## Hardware

### Table Top Screws



- Serrated head and thick threading provides superior holding power to frame with the ability to be serviced easily in the field.
- Tamper resistant.

### Flower Glides and Tube Closures

- Made from glass-infused nylon and spring steel, will not break or fall out.

### Casters



- 4" heavy-duty, double ball-bearing casters.
- Weight capacity of 275 lbs. per caster.
- Hard rubber, non-marring wheels.

## Operation

### Entrances (for bench units)

- Each bench is designed for easy entry on both ends.

### Locking - Opening



- A gravity lock automatically locks the table in the open position. The lock is disengaged manually, capable of being operated from both sides of the table.

### Locking - Folding



- The storage lock latch automatically locks the table in the folded storage position. The lock is disengaged manually, capable of being operated from both sides of the table and within easy reach.

### Custom Torsion Bar System



- Easy opening and closing via a perfectly balanced torsion bar system.
- Each unit includes 1 to 5 torsion bars determined by table size and core material.
- Each torsion bar is at a specific angle based on weight distribution.

## Safety

### Lift-Off Casters



- Mobile tables incorporate the beneficial castor lift-off design in which casters lift off the floor in the open position.
- Lift-off casters do not protrude past the seats so they are not a tripping hazard.

### Midway Position Lock



- Secures the unit in a partially folded position for ease of movement during floor cleaning and to prevent finger or hand pinching.
- Allows for easy movement without the need to fold the table.

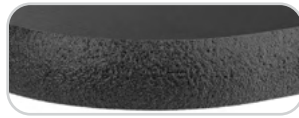
### Storage Lock Latch

- Tested for 7,000 open/close cycles exceeding.

## Standard Edges *No minimum required*



Vinyl T-Molding | Black (TM)



Protect Edge | Black (PE)



3MM PVC Edge Banding | Black (EB)

## Premium Edges *Subject to minimum quantity and upcharge*

VINYL T-MOLD



Navy (TN)



Green (TG)



Red (TR)



Brown (TO)



Beige (TB)



Silver (TS)



Medium Grey (TE)



Light Grey (TL)

PROTECT EDGE



Navy (PN)



Green (PG)



Red (PR)



Purple (PP)



Orange (PO)



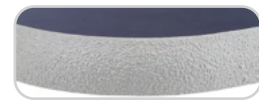
Beige (PB)



Dark Grey (PD)



Medium Grey (PM)



Light Grey (PL)

3MM PVC EDGE BANDING



Navy (EN)



Green (EG)



Red (ER)



Purple (EP)



Beige (EE)



Dark Grey (ED)



Medium Grey (EM)



Light Grey (EL)

## Trending Standard Laminates *No minimum required*



Ashwood Bone  
AH



Weathered Ash  
ED



Silver Riftwood  
SI



Black Riftwood  
BR



Cream Softwood  
CJ



Danish Maple  
DA



Taupe Walnut  
DY



Planked Urban Oak  
PU



Formal Walnut  
FQ



Clove Spice Cherry  
CX



Antique Mango  
AM



Buff Elm  
BM



Camel Elm  
CM



Graphite Elm  
EG



Swede Rift Oak  
WE



Scandi Rift Oak  
RO



Cherry Walnut  
YC



Pecan Walnut  
QW



Sand Maple  
ZM



Finnish Oak  
FK



Millennium Oak  
MK



Wild Cherry  
WI



Gallery Teak  
GK



Acajou Mahogany  
AC



Prestige Walnut  
PQ



Aluminum  
AU



Stainless  
LS



Blackened Steel  
BS



Starched Paperfold  
SP



Origami Paperfold  
OR



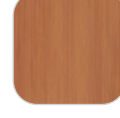
Washi Paperfold  
PD



Pale Brushstroke  
QB



Wood Brushstroke  
WQ



Earthenware  
Brushstroke  
EB



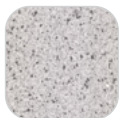
Carrara Bianco  
ZC



Neo Cloud  
UD



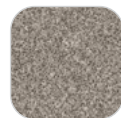
Patine Concrete  
QO



Folkstone Celesta  
YF



Gray Grafix  
GX



Stone Grafix  
SX



Graphite Grafix  
GX



White Twill  
WW



Neutral Twill  
NU



Graphite Twill  
WG



Cotton Cloth  
TT



Woolen Cloth  
WK



Glass Cloth  
GL



Sheer Fabric  
SQ



Muslin Fabric  
MF



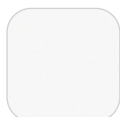
Gray Fabric  
QF



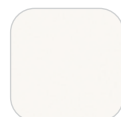
Chambray Fabric  
ZF



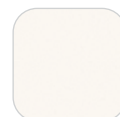
White  
WF



Brite White  
ZW



Dover White  
DO



Mission White  
MS



Pearl  
QE



Almond  
AA



Pumice  
QP



Olyster Gray  
OY



Platinum  
QL



Fog  
FG



Mouse  
OU



Otter  
OE

## Trending Standard Laminates No minimum required



Earth  
YE



Dark Chocolate  
DK



Storm  
SJ



Graphite  
GI



Black  
BK



Blush  
BQ



Stop Red  
RD



New Burgundy  
BU



Vibrant Green  
VN



Spectrum Green  
QG



Jadeite  
JA



Green Slate  
GS



Clementine  
CQ



Gold Braze  
GB



Chrome Yellow  
YL



Liquid Glass  
LQ



Fossil  
FZ



Winter Sky  
SY



Denim  
DN



Earthenware  
EQ



Spectrum Blue  
SB



Navy Blue  
NB



Cassis  
XS



Purple Dye  
PY

### Choose any laminates from:

May be subject to minimum quantity and upcharge



## Other Standard Laminates No minimum required



Robin  
RN



Port  
PO



Regimental Red  
RR



Hollyberry  
RE



Candy Apple  
CD



Dragon Fire  
DF



Orange Grove  
OG



Hunter Green  
GR



Ocean  
OC



Cornflower  
FF



Persian Blue  
BL



Lapis Blue  
LB



Catalina  
CI



Indigo  
IN



Gumball  
GM



Concord Grape  
CG



Graphite Nebula  
GN



Asian Night  
AN



Rustic Slate  
RS



Forged Steel  
FS



Figured Mahogany  
MY



Windsor Mahogany  
WM



Lowell Ash  
LA



Burnished Chestnut  
CT



Buka Bark  
KB



River Cherry  
RC



Nepal Teak  
NT



Wild Cherry  
CH

## Other Standard Laminates

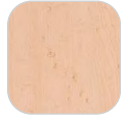
*No minimum required*



Bannister Oak  
OK



Castle Oak  
CO



Limber Maple  
LM



Kensington Maple  
KS



Fusion Maple  
FM



Manitoba Maple  
MT



Almond Leather  
AL



Boardwalk Oak  
BD



Steel Mesh  
SL



Slate Grey  
SG



Mystic Night  
MN



Pewter Brush  
PB



Windswept Pewter  
WP



Twilight Zephyr  
TZ



Sheer Mesh  
SM



Crisp Linen  
CL



High Rise  
HR



Frosty White  
FW



White Sand  
WS



Titanium EV  
EV



Carbon Ev  
CE



Evening Tigris  
ET



Bronze Legacy  
BZ



Pearl Soapstone  
PS



Grey Glace  
GG



Grey Nebula  
GY



Platinum  
PL



Fashion Grey  
GF



White Nebula  
WN



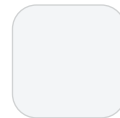
White Tigris  
TW



Grey  
RG



Grey Pampas  
PP



Designer White  
DW



Blackbird  
CK



Black  
BK



Maroochy Brush  
MB



Sunny Side Up  
UP



Island  
IS



Fresh Cut  
FE



Atlantis  
AT



Brittany Blue  
BB



Woolamai Brush  
WO



Navy Legacy  
NL



Coffee Bean  
CB



Montana Walnut  
WT



Windswept Bronze  
WZ



Pinnacle Walnut  
PN



Fonthill Pear  
FP



Harvest Maple  
HM



New Age Oak  
NW



Monticello Maple  
MP



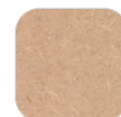
Natural Almond  
NA



Neutral Glace  
GC



Desert Zephyr  
DZ



Natural Tigris  
NG



Earthen Warp  
EW



Pewter Mesh  
PW



Green Tigris  
GT



Dove Grey  
DG



Tailored Linen  
TA



North Sea  
NS



Pressed Linen  
LN



Cloud Nebula  
CN

## Premium Laminates

Minimum Quantity, Upcharge and 10 week lead time apply



Marmalade  
ML



Quince  
QN



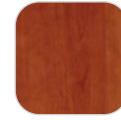
Wheat Berry  
BY



Kale Leaf  
KL



Blue Curacao  
CR



Biltmore Cherry  
BC



Williamsburg Cherry  
WC



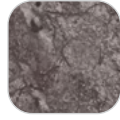
Xanadu  
XD



Skyline Walnut  
SW



Charcoal Velvet  
CV



Andora Shadow  
AW



White Cypress  
CY



White Driftwood  
WD



Grey Elm  
GE



Portico Teak  
PT



Italian Silver Ash  
IA



Cosmic Strandz  
CS



Ink Vesta  
IV



Gold Alchemy  
GA



Whiteboard  
WB

**IF YOU DON'T  
SEE A LAMINATE,  
JUST ASK!**

## Custom Logo Options

Upcharge and extended lead times apply

*Elevate Every Space  
with Personalized Designs!*



*Customize Your Laminate With  
A Design Inspired By YOUR LOGO*



**JUST SEND US  
A LOGO FILE!**

**BULLDOGS**



# CAFETERIA & CAFE TABLETOP GUIDE



**National Public Seating**

www.nationalpublicseating.com

## MDF

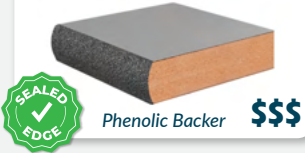


Sealed Edge  
↳ **Protect Edge**

**MDF** is an engineered product comprised essentially of recycled wood particles and wood fibers held together by a resin binder or wax and compressed to form flat panels under extremely high temperatures.

### COMPATIBLE EDGE

#### Protect Edge



Phenolic Backer \$\$\$

## PARTICLEBOARD

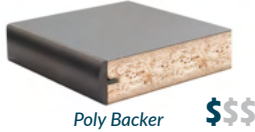


Sealed Edge  
↳ **3MM PVC Edge Banding**

**Particleboard** is a composite wood made from sawmill shavings, wood chips, and resin, which are heat pressed together.

### COMPATIBLE EDGE

#### Vinyl T-Mold Edge



Poly Backer \$\$\$

#### 3MM PVC Edge Banding



Poly Backer \$\$\$

## PLYWOOD



Sealed Edge  
↳ **3MM PVC Edge Banding**  
↳ **Protect Edge**

**Plywood** is constructed from multiple layers of very thin sheets of wood, which are bonded to each other with resin adhesive and cured with heat and pressure.

### COMPATIBLE EDGE

#### Vinyl T-Mold Edge



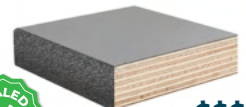
Poly Backer \$\$\$

#### 3MM PVC Edge Banding



Poly Backer \$\$\$

#### Protect Edge



Poly Backer \$\$\$\$

### 3MM PVC EDGE BANDING



**3MM PVC Edge Banding** is applied to the edge of the wood with a process that involves heating EVA pellets to create a strong and durable bond, forming a liquid-tight seal between the tabletop and the edge banding. The adhesive used can withstand high temperatures up to 170 degrees Fahrenheit.

### VINYL T-MOLD EDGE



**T-Mold Edge** is characterized by a T-shaped molding that is inserted into a groove along the edge of the tabletop. The T-Mold is made of a durable and flexible material, that is able to withstand wear and tear and is stapled to the underside of the tabletop for added resilience.

### PROTECT EDGE



**Protect Edge** is a tough and durable polyurethane sprayed-on edge with a textured finish that helps to prevent scratches and damage to the tabletop. The edge is sprayed onto the wood, creating a uniquely strong bond, which creates a liquid-tight seal between the tabletop and the substrate.

CORE

EDGE