

## Hands-Free Floor Mount Stainless Steel Sink

Model	Flow-Rate
727FK1	Standard 2.0 GPM
727FK1.5	Low-Flow 0.5 GPM

### Product Specifications

Hands-Free operation is ideal for use in food service applications. Built to last using 16-gauge, type 304 stainless steel. Exposed surfaces have a satin finish. Specially designed foot valve provides easy access to working parts without disconnecting mount or plumbing.

Outside Dimensions	20" x 17-1/2" x 43-1/2" High
Inside Bowl Size	17" x 14" x 7" Deep
Back Splash Height	9-1/2"
Side Splash Height	9-1/2"
Water Activation	Single Knee Pedal Valve
Flow Rate	2 GPM
Inlet Connections	3/8" Male Compression
Drain Opening	2"
Finish	Satin
Strainer	1-1/2" Dia. Duo Basket Strainer

### Includes

- (1) Floor mount sink
- (1) Leg assembly set
- (4) Washers and nuts for connection sink to leg assembly set
- (1) Single knee pedal valve (bottom mount) with 2 nuts
- (1) Swivel gooseneck spout with aerator
- (1) Connecting tube for valve to spout connection
- (2) Fittings, brass, 0.375" male compression and 0.375" male NPT
- (1) Mixing check valve
- (1) Strainer assembly with basket

### Product Compliance

NSF/ANSI 2 Food Equipment  
NSF/ANSI 372 Low-Lead



Part: \_\_\_\_\_ Quantity: \_\_\_\_\_

Project: \_\_\_\_\_

Contact: \_\_\_\_\_

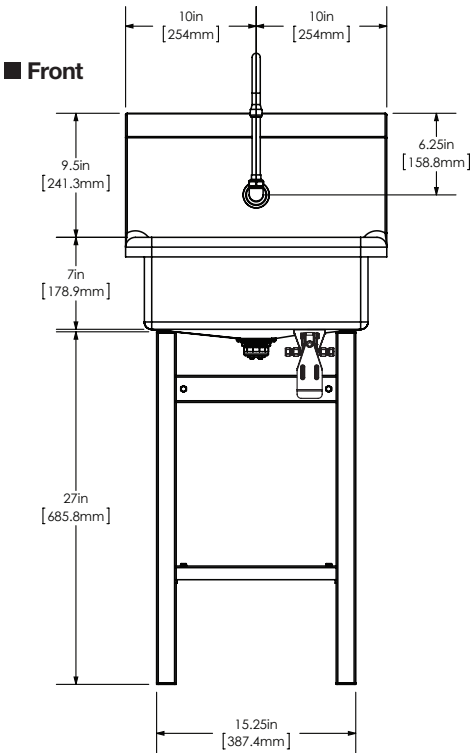
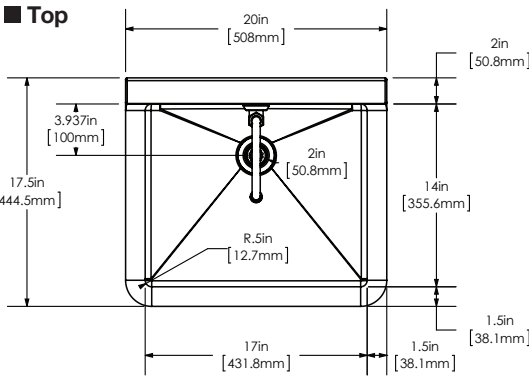
Date: \_\_\_\_\_

Approval: \_\_\_\_\_

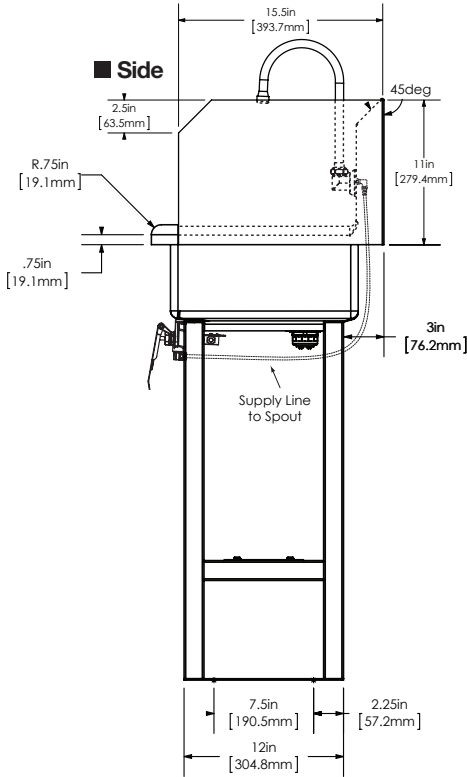
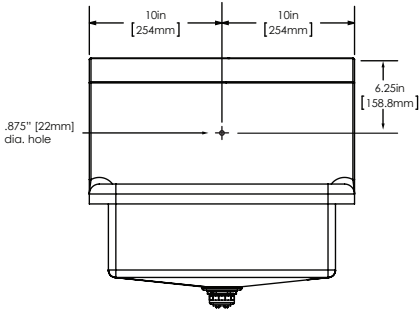
Notes:



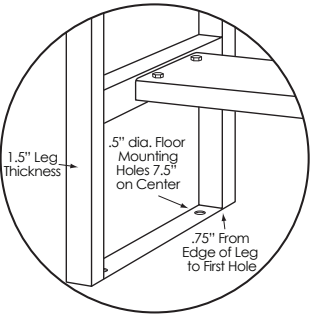
Hands-Free Floor Mount Stainless Steel Sink  
Models 727FK1 and 727FK1.5



■ Hole Configuration



■ Floor Mounting Detail



■ Supply Line Detail

