

## 5-Person Hands-Free Floor Mount Stainless Steel Wash Station

Model	Flow-Rate
510F1	Standard 2.0 GPM
510F1-0.5	Low-Flow 0.5 GPM

### Product Specifications

Constructed from welded #16 gauge type 304 stainless steel. The front, bottom and back are formed from a single sheet with a rolled rim on front and sides. Exposed surfaces have a blended uniform satin finish. Specially designed foot valves provide easy access to working parts without disconnecting mount or plumbing.

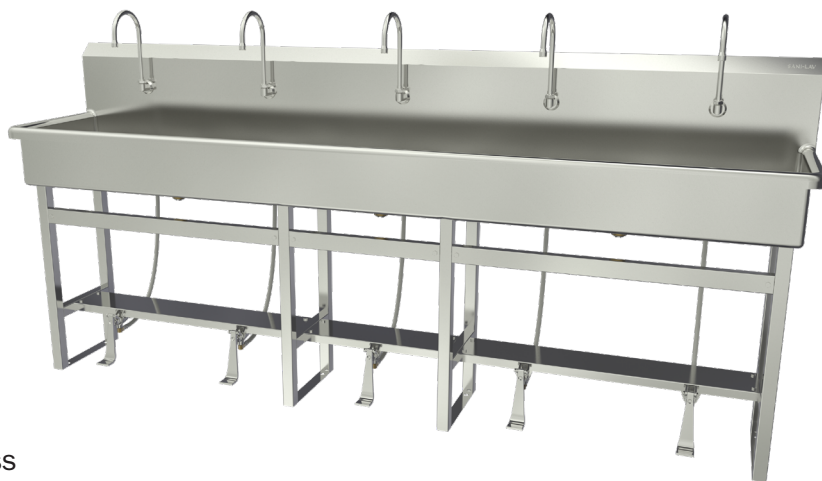
Outside Dimensions	100" x 20" x 45" High
Inside Bowl Size	97" x 16-1/2" x 8" Deep
Back Splash Height	10"
Water Activation	Single Foot Pedal Valve
Flow Rate	2 GPM
Inlet Connections	3/8" Male Compression
Drain Opening	2"
Finish	Satin
Strainer	1-1/2" Dia. Duo Basket Strainer

### Includes

- (1) Floor mount wash station
- (1) Leg assembly set
- (8) Washers and nuts for connection sink to leg assembly set
- (5) Single foot pedal valve (bottom mount) with 4 nuts
- (5) Swivel gooseneck spout with aerator
- (5) Connecting tube for valve to spout connection
- (10) Fittings, brass, 0.375" male compression and 0.375" male NPT
- (5) Mixing check valve
- (3) Strainer assembly with basket

### Product Compliance

NSF/ANSI 2 Food Equipment  
NSF/ANSI 372 Low-Lead



Part: \_\_\_\_\_ Quantity: \_\_\_\_\_

Project: \_\_\_\_\_

Contact: \_\_\_\_\_

Date: \_\_\_\_\_

Approval: \_\_\_\_\_

Notes:



**Front**

Diagram illustrating the front view of the dresser with dimensions and features:

- Top panel height: 10" (254mm)
- Drawer height: 8" (203mm)
- Drawer depth: 5" R (12.7mm)
- Drawer width: 36.5" (927.1mm)
- Drawer depth: 21" (533.4mm)
- Drawer width: 36.5" (927.1mm)
- Drawer depth: 27" (686mm)

■ **Side**

20" (508mm)  
2" (51mm)

7.5" (191mm)

1.5" (38mm)

35" (889mm)  
floor to rim height

9" (228.6mm)

2.875" (73.02mm)

45°

7.5" (20mm)

Supply Line to Spout

mounting holes  
9" (228.6mm)  
on center

Faucet

Back Splash

3/8" Male Compression

Supply Line from Valve to Spout

