



A WATTS Brand

## S19-2000 (EFX8), S19-2000EFX Emergency Fixture Thermostatic Mixing Valves

- Exceeds ANSI Z358.1
- ASSE 1071 Certified
- Reliable Liquid-Filled Thermostat with 10-Year Warranty
- Checkstops on Inlets
- Adjustable Set Point within Temperature Range
- Accurate Temperature Control to within  $\pm 3^{\circ}$  F
- Built-in Cold Water Bypass, Assuring Cold Flow
- Positive Shutoff of Hot Supply When Cold Supply is Lost
- Easy Installation and Serviceability
- Dirt and Lime Resistant
- Dial Thermometer
- Factory Assembled and Tested
- Universal Mounting Capability
- Cabinet Features:
  - 18 Gauge Body & Door
  - Left-Hand Hinge
  - Cylinder Lock
  - Inlet/Outlet Knock-Out Holes for Mounting Flexibility
  - Stainless Steel or Baked White Enamel Finishes
  - Surface-Mounted or Recessed Style with Flange

### Valve Specifications

**Maximum Operating Pressure**  
125 PSI (860 kPa)

**Maximum Inlet Temperature**  
180° F (82° C)

**Recommended Inlet Temperature**  
120° F (49° C) – 140° F (60° C)

Temperature Range	Set Point
<b>Std.</b> 65° F (18° C) to 90° F (32° C)	85° F (29° C)

### Flow Capacities – GPM

Model	Min. Flow	Pressure Drop – PSI						
		5	10	15	20	30	45	60
<b>S19-2000</b>	1.5	3.0	4.0	5.0	6.0	7.3	9.0	10.5
<b>Cold Bypass Only</b>		2.3	3.2	4.0	4.6	5.6	6.8	7.7

### Flow Capacities – L/Min

Model	Min. Flow	Pressure Drop – Bar						
		.5	1.0	1.5	2.0	2.5	3.0	4.0
<b>S19-2000</b>	5.5	13.5	19.0	23.5	27.0	30.5	33.5	38.5
<b>Cold Bypass Only</b>		10.5	14.5	18.0	21.0	23.5	25.5	29.5



*This plumbing fixture is not intended to dispense water for human consumption through drinking or for preparation of food or beverages.*

### Code Compliance and Certifications

ASSE 1071 & UPC certified.



Engineer's Approval \_\_\_\_\_

Page 1 of 3

2/5/2024

This information is subject to change without notice.

Bradley\_TMV\_Emergency\_EFX8



**S19-2000**

### Valve Model

**Model**

**S19-2000**

**S19-2000EFX**

**Description**

Emergency Fixture Thermostatic Mixing Valve  
Emergency Fixture Thermostatic Mixing Valve for  
S19294JB & S19294JBT Only

### Configurable Valve Model (select one)

**Model**

**EFX8**

**CAB-EFX8**

**Description**

EFX8 Thermostatic Mixing Valve with Options

EFX8 Thermostatic Mixing Valve **Cabinet Only**

### Optional Valve Selections

**Finish**

**R**

Rough Brass (standard)

**C**

Chrome Plated

**Bracket**

**B**

Wall Mounting Bracket

**O**

None

### Optional Cabinet Selections

**Cabinets (includes bracket)**

**SS**

Surface Mount Stainless Steel

**RS**

Recessed Stainless Steel

**SE**

Surface Mount White Enamel

**RE**

Recessed White Enamel

**O**

None

**Window**

**W**

Plexi-Glass Window in Door

**O**

None

### Application

[Eye or Eye/Face Wash](#)



Complies with ANSI/ISEA Z358.1

© 2024 Bradley

P.O. Box 309, Menomonee Falls, WI 53052-0309  
800 BRADLEY (800 272 3539)

+1 262 251 6000  
bradleycorp.com



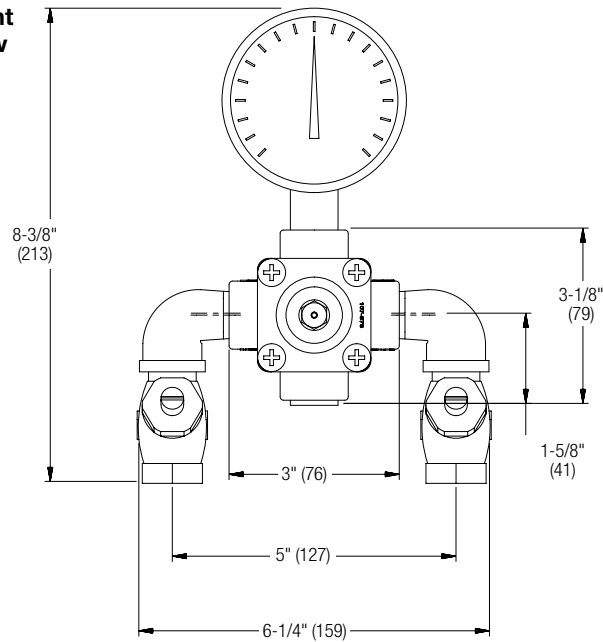
A WATTS Brand

# S19-2000 (EFX8), S19-2000EFX Emergency Fixture Thermostatic Mixing Valves

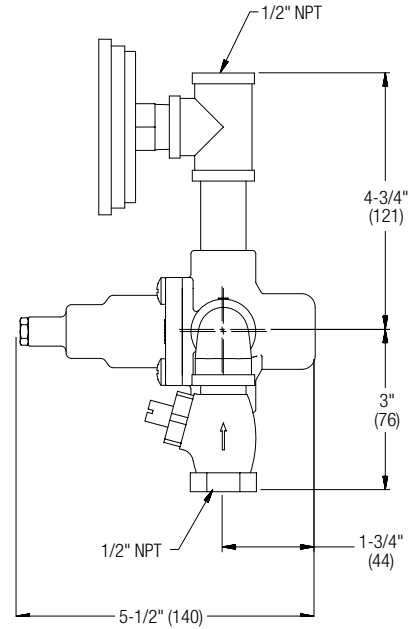
## Dimensions

(mm)

**Front View**

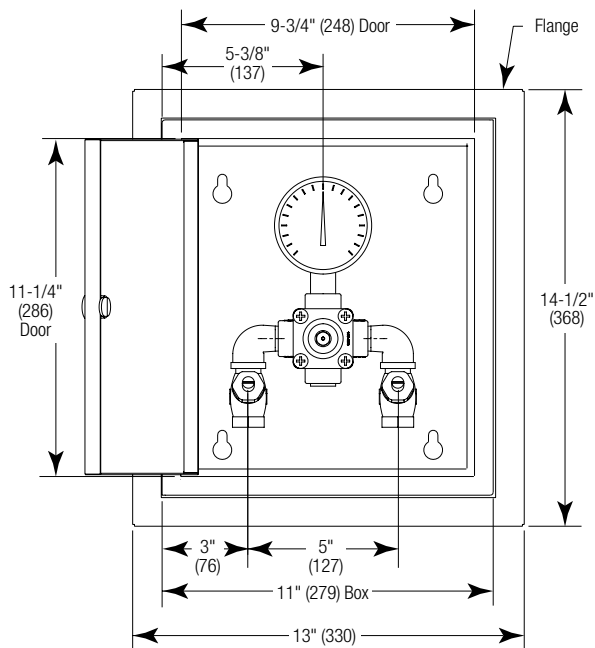


**Side View**

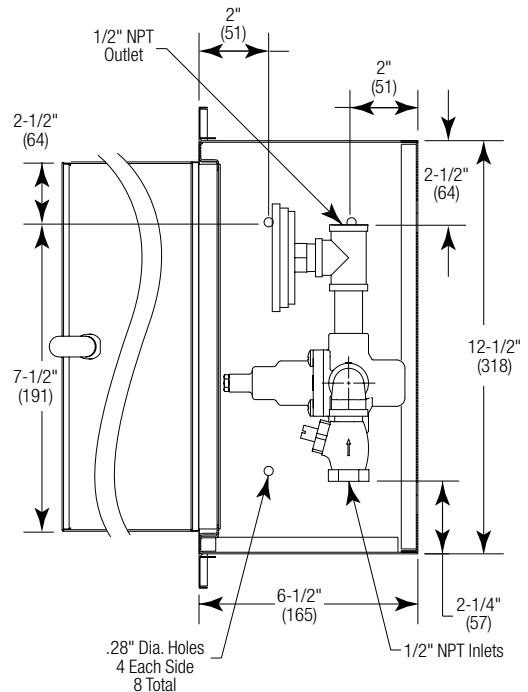


## Dimensions — S19-2000 Recessed Cabinet

**Front View**



**Side View**





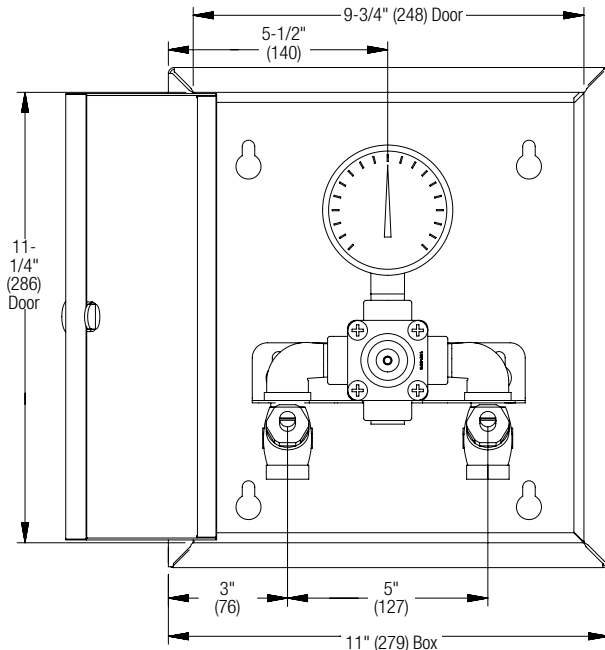
A WATTS Brand

# S19-2000 (EFX8), S19-2000EFX Emergency Fixture Thermostatic Mixing Valves

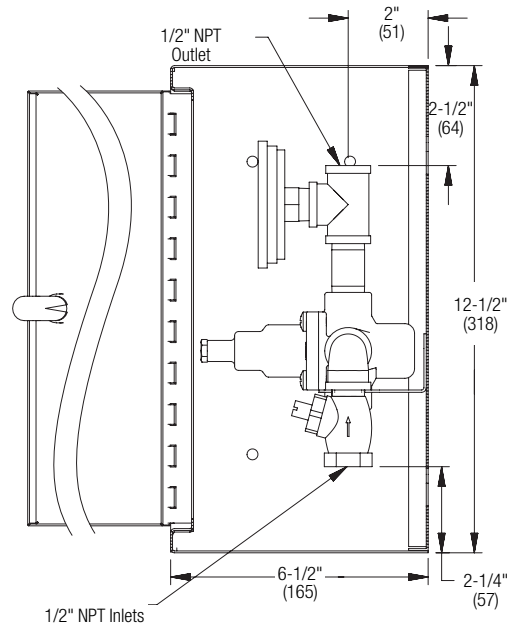
Dimensions — S19-2000 Surface-Mounted Cabinet

(mm)

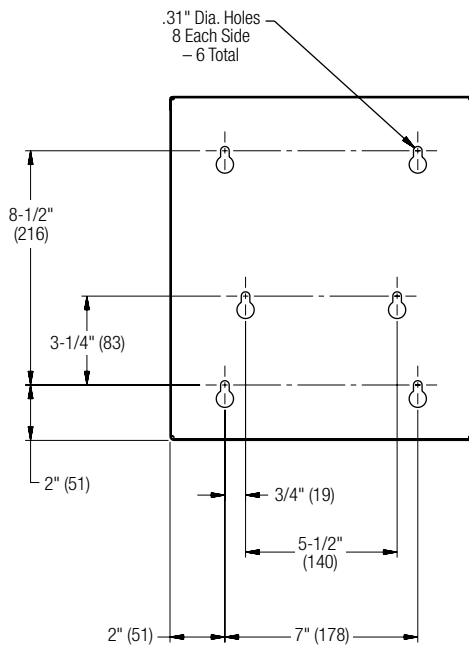
**Front View**



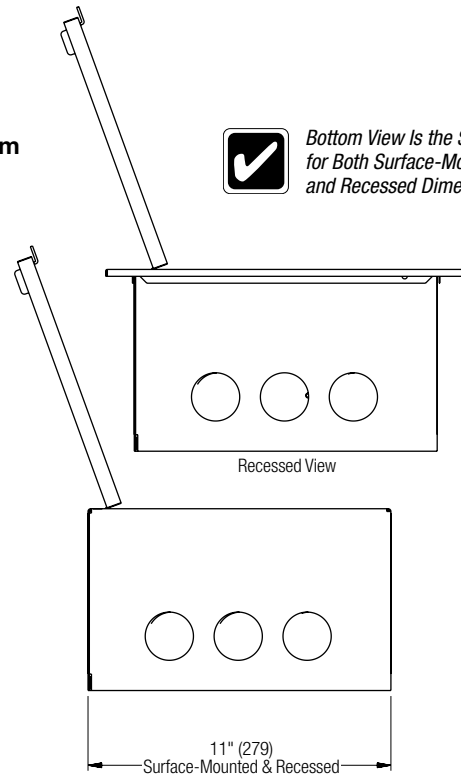
**Side View**



**Back View**



**Bottom View**



Bottom View Is the Same  
for Both Surface-Mounted  
and Recessed Dimensions.