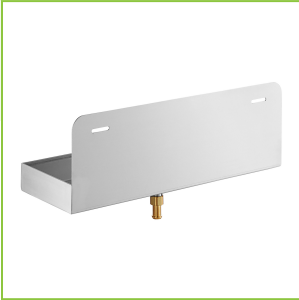




Regency MDT-620 19 1/2" x 6" x 6 1/2" 16-Gauge 304  
Stainless Steel Mop Sink Drainage Tray

#600SMDT196



Technical Data

Length	19 1/2 Inches
Width	6 Inches
Height	6 Inches
Features	NSF Certified
Gauge	16 Gauge
Installation Type	Floor Model
Material	Stainless Steel
Stainless Steel Type	Type 304
Type	Drain Trays

Features

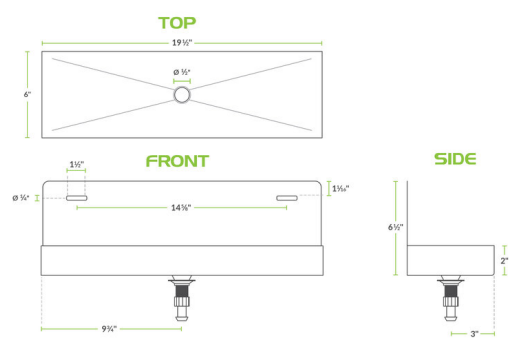
- 16-gauge type 304-series stainless steel bowl
- Allows for easy disposal of water
- Welded seams for a smooth finish
- Wall mounted (hardware sold separately)
- Great for janitorial closets, utility rooms, and warehouses

Certifications



NSF Certified

Plan View



Notes & Details

Keep dirty mop water off of your floors and walls with this Regency mop sink drainage tray! This model features a 6" height to accommodate your mop head while feeding excess water through a 1/2" drain, and into your mop sink. It is made of 16 gauge type 304 series stainless steel and is easily mounted to a wall.