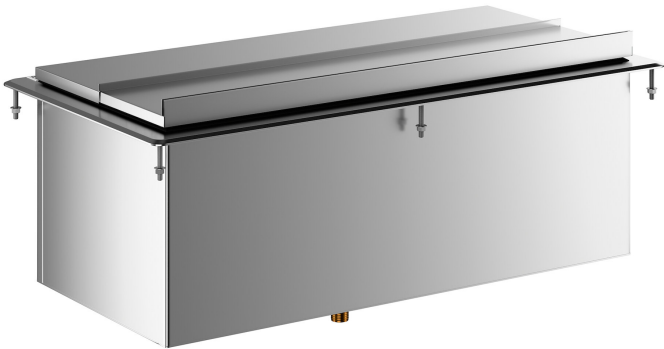




Regency DIIB-183610 18" x 36" Stainless Steel Drop-In Ice Bin

#600DIIB1836



Technical Data

Length	36 Inches
Width	18 Inches
Height	11 15/16 Inches
Cutout Length	35 1/4 Inches
Ice Bin Length	32 1/8 Inches
Cutout Width	17 1/4 Inches
Ice Bin Width	13 1/2 Inches
Ice Bin Depth	10 7/8 Inches
Capacity	80 lb.
Features	NSF Certified

Features

- Made of 20 gauge, 304 stainless steel
- 1" NPT stainless steel drain
- Requires a 35 1/4" x 17 1/4" cutout
- Stainless steel sliding lid included
- Perfect for storing ice conveniently close at hand

Certifications

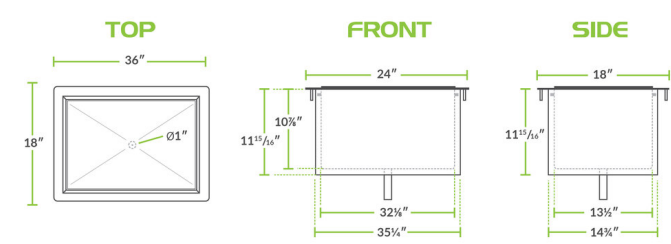


NSF Certified

Technical Data

Installation Type	Drop-In
Lid	With Lid
Material	Stainless Steel
Type	Drop In Ice Bins Without Cold Plate

Plan View



Notes & Details

Keep your ice insulated and easily accessible with the Regency 18" x 36" stainless steel drop-in ice bin. With a 10" deep cavity, this chest can accommodate drink-serving operations of nearly any size. The whole unit has dense foamed-in-place insulation, ensuring your ice stays cool for extended periods of time.

20 gauge type 304 stainless steel construction adds extended durability, while a 1" centered stainless steel drain siphons away melted ice. A stainless steel sliding cover is included to ensure proper insulation and protect the ice from contamination. This unit requires a 32 1/2" long x 13 1/2" wide x 10" deep cutout.