



Regency 23" 16 Gauge Stainless Steel One Compartment Commercial Sink with Stainless Steel Legs and Cross Bracing - 18" x 24" x 14" Bowl

#6CS11824X



Technical Data

Length	23 Inches
Width	29 1/2 Inches
Height	43 3/4 Inches
Bowl Depth	14 Inches
Backsplash Height	9 3/4 Inches
Basket Drain Size	3 1/2 Inches
Bowl Front to Back	24 Inches
Bowl Left to Right	18 Inches
Faucet Centers	8 Inches
Features	Sink

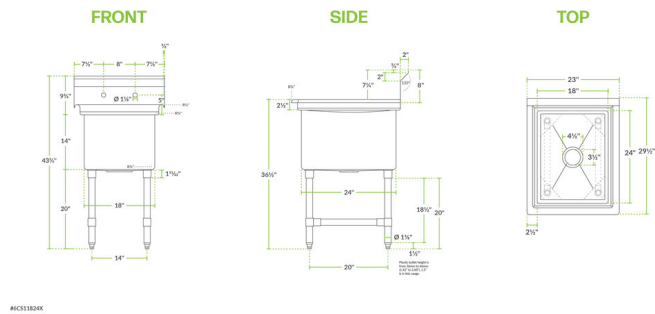
Features

- High-quality, durable 16 gauge type 304 stainless steel
- 14" deep bowl with rounded corners for easy cleaning
- 1 5/8" diameter stainless steel legs with cross bracing, sockets, and bullet feet
- 3 1/2" drain basket strainer and 1 1/2" IPS drain connection
- Backsplash and rolled edges prevent splashes and overflow

Technical Data

Gauge	16 Gauge
Included	Basket Strainer
Leg Construction	Stainless Steel
Material	Stainless Steel
Number of Compartments	1 Compartment
Number of Drainboards	None
Stainless Steel Type	Type 304
Style	0 Drainboards
Type	Straight / Line Sinks


Plan View



Notes & Details

Outfit your facility with a long-lasting sink that will meet your needs with this Regency 23" stainless steel one compartment commercial sink. This durable sink is made with high-quality, welded 16 gauge type 304 stainless steel for durability, corrosion resistance, and long-lasting use. It's dipped a minimum of 1/4" to facilitate better drainage, and it also features 1 5/8" diameter stainless steel legs with stainless steel cross bracing, sockets, and bullet feet for added stability.

This sink features a 14" deep bowl that includes a 3 1/2" drain basket strainer to catch food debris, which prevents the drain from clogging, and a 1 1/2" IPS drain connection. For easy cleaning, the compartment has rounded corners so you can rinse and wipe down the sink. This sink also includes a 1 1/2" x 2" raised, rolled edge on the front and both sides, as well as a 9 3/4" tall backsplash to contain splashes and overflow. The sink is designed with (2) 1 1/8" diameter holes punched on 8" centers to accommodate 1 faucet (sold separately).

 **WARNING:** This product can expose you to chemicals including lead, which are known to the State of California to cause cancer and birth defects or other reproductive harm. For more information, go to www.p65warnings.ca.gov.