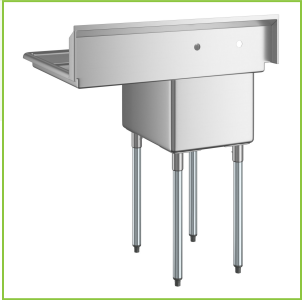




Regency 36 1/2" 16 Gauge Stainless Steel One Compartment Commercial Sink with 18" Right Drainboard and Galvanized Steel Legs - 16" x 20" x 12" Bowl

#6CS1162018GR



Technical Data

Length	36 1/2 Inches
Width	25 1/2 Inches
Height	43 3/4 Inches
Drainboard Length	18 Inches
Bowl Depth	12 Inches
Backsplash Height	9 3/4 Inches
Work Surface Height	34 Inches
Basket Drain Size	3 1/2 Inches
Bowl Front to Back	20 Inches
Bowl Left to Right	16 Inches

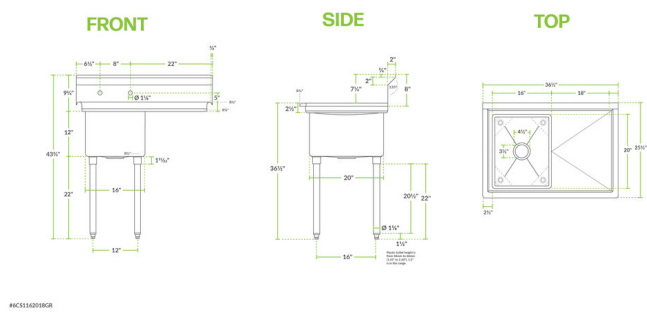
Features

- High-quality, durable 16 gauge type 304 stainless steel
- 12" deep bowl with rounded corners for easy cleaning
- 1 5/8" diameter galvanized steel legs with adjustable plastic bullet feet
- 18" right-side drainboard and 3 1/2" drain basket strainer
- Backsplash and rolled edges prevent splashes and overflow

Technical Data

Drainboard Location	Right Drainboard
Faucet Centers	8 Inches
Features	Drainboard Sink
Gauge	16 Gauge
Included	Basket Strainer
Leg Construction	Galvanized Steel
Material	Stainless Steel
Number of Compartments	1 Compartment
Number of Drainboards	1 Drainboard
Stainless Steel Type	Type 304
Style	1 Drainboard
Type	Straight / Line Sinks


Plan View



Notes & Details

Outfit your facility with a long-lasting sink that will meet your needs with this Regency 36 1/2" stainless steel one compartment commercial sink with 1 drainboard. This durable sink is made with high-quality, welded 16 gauge type 304 stainless steel for durability, corrosion resistance, and long-lasting use. This sink features a 34" work surface height with a sturdy 18" right-side drainboard, allowing you to easily wash and dry dishes and utensils in one convenient location. It's also dipped a minimum of 1/4" to facilitate better drainage. This item's 1 5/8" diameter galvanized steel legs with adjustable plastic bullet feet provide added stability.

This sink features a 12" deep bowl that includes a 3 1/2" drain basket strainer to catch food debris, which prevents the drain from clogging. For easy cleaning, the compartment has rounded corners so you can rinse and wipe down the sink. This sink also includes a 1 1/2" raised, rolled edge that raises to 2" on the front and both sides, as well as a 9 3/4" tall backsplash to contain splashes and overflow. The sink is designed with (2) 1 1/8" diameter holes punched on 8" centers to accommodate 1 faucet (sold separately).

 **WARNING:** This product can expose you to chemicals including lead, which are known to the State of California to cause cancer and birth defects or other reproductive harm. For more information, go to www.p65warnings.ca.gov.