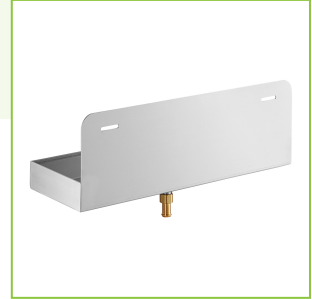




Regency 19 1/2" x 6" x 6 1/2" 16-Gauge 304 Stainless Steel Mop Sink Drainage Tray

#600SMDT196



Technical Data

Length	19 1/2 Inches
Width	6 Inches
Height	6 Inches
Features	NSF Listed
Gauge	16 Gauge
Installation Type	Floor Model
Material	Stainless Steel
Stainless Steel Type	Type 304
Type	Drain Trays

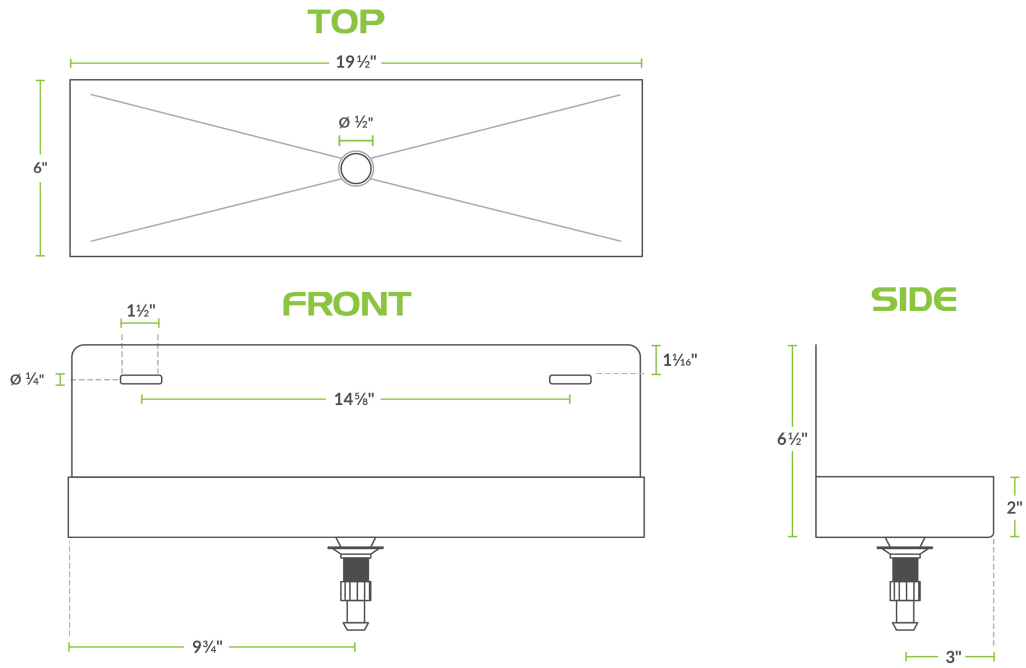
Features

- 16-gauge type 304-series stainless steel bowl
- Allows for easy disposal of water
- Welded seams for a smooth finish
- Wall mounted (hardware sold separately)
- Great for janitorial closets, utility rooms, and warehouses

Certifications



Plan View



Notes & Details

Keep dirty mop water off of your floors and walls with this Regency mop sink drainage tray! This model features a 6" height to accommodate your mop head while feeding excess water through a 1/2" drain, and into your mop sink. It is made of 16 gauge type 304 series stainless steel and is easily mounted to a wall.

⚠ WARNING: This product can expose you to chemicals including lead, which are known to the State of California to cause cancer, birth defects, or other reproductive harm. For more information, go to www.p65warnings.ca.gov.