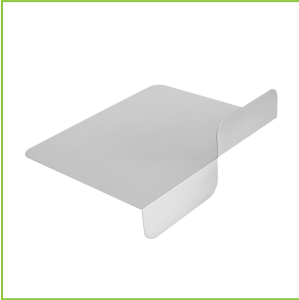
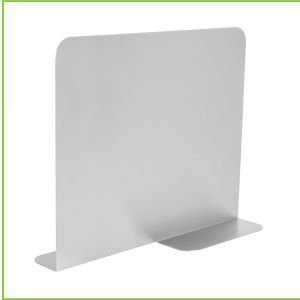




Regency 12" Stainless Steel Ice Bin Partition
#600IBDIV12



Technical Data

Type	Partitions
------	------------

Features

- Made of corrosion resistant 16 gauge type 304 stainless steel
- Measures 14 1/2" x 12"
- Great way to boost efficiency and stay organized behind your bar

Notes & Details

Business can get hectic behind the bar during a busy rush, so boost your operation's efficiency and stay organized with this Regency 12" ice bin partition! This partition allows you to use your ice bin to keep a variety of beer or liquor chilled, keeping what you need close at hand while dividing the bin into sections so you can always quickly grab what you need at a glance. For slower nights, it also allows you to fill a smaller portion of your bin with ice to minimize waste. Made of corrosion resistant 16 gauge type 304 stainless steel, this ice bin partition is sure to stand tough against daily use in your bar, pub, or tavern!