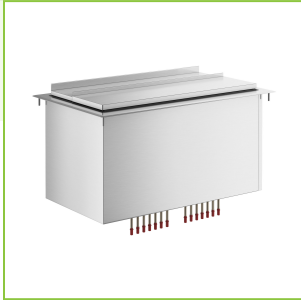




Regency 18" x 30" Stainless Steel Drop-In Ice Bin with 7
Circuit Post-Mix Cold Plate

#600IB3018CP



Technical Data

Length	30 Inches
Width	18 Inches
Height	14 5/16 Inches
Cutout Length	29 1/4 Inches
Ice Bin Length	26 1/8 Inches
Cutout Width	17 1/4 Inches
Ice Bin Width	13 1/2 Inches
Ice Bin Depth	10 7/8 Inches
Capacity	65 lb.
Drain Outlet Size	1 Inch

Features

- Made of 20 gauge, 304 stainless steel
- 1" NPT stainless steel drain
- 7 circuit post-mix cold plate chills up to 7 different beverage lines
- Stainless steel sliding lid included
- Perfect for storing ice conveniently close at hand

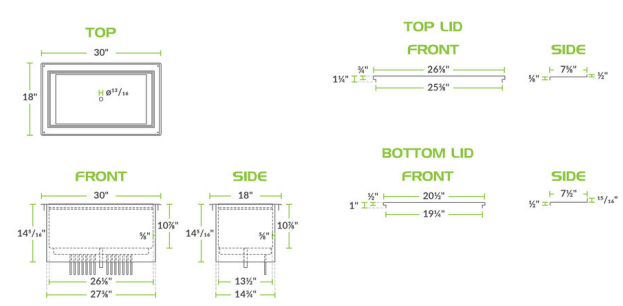
Certifications



Technical Data

Features	Lid Included NSF Listed
Gauge	20 Gauge
Installation Type	Drop-In
Material	Stainless Steel
Number of Cold Plate Circuits	7 Circuits
Stainless Steel Type	Type 304
Type	Drop In Ice Bins With Cold Plate


Plan View



Notes & Details

Whether you're serving up a delicious cocktail or a refreshing soda, ensure you have a steady supply of cold beverages at your bar thanks to this Regency drop-in ice bin with 7 circuit cold plate! This convenient unit not only holds plenty of ice but also boasts a post-mix cold plate with stainless steel, beverage-grade tubing circuits that allow you to run up to 7 soda lines through the bin to chill them before serving. The interior bowl holds ice, while a stainless steel sliding cover is included to ensure proper insulation and protect the ice from contamination.

This Regency ice bin is constructed of 20 gauge, type 304 stainless steel and features foam insulation to help keep the bin's contents cooler longer. A 1" NPT stainless steel drain safely drains melted ice water from the unit so you're only left with solid pieces. With its 65 lb. ice capacity, this bin holds plenty of ice to keep your operation going, customer after customer. With a 10 7/8" deep cavity, this chest can accommodate drink-serving operations of nearly any size.

 **WARNING:** This product can expose you to chemicals including lead, which are known to the State of California to cause cancer and birth defects or other reproductive harm. For more information, go to www.p65warnings.ca.gov.