

REGENCY™
Tables and Sinks

Regency Stainless Steel Flat Top Glass Rack Storage Unit - 23" x 24"

#600GRSU2324



Technical Data

Length	24 Inches
Width	23 Inches
Height	33 Inches
Backsplash Height	3 Inches
Shelf Height	7 1/8 Inches
Work Surface Height	30 Inches
Backsplash	With Backsplash
Drain Size	1 Inch
Features	NSF Listed
Leg Construction	Stainless Steel

Features

- Made of durable 18 gauge, 304 stainless steel
- Smooth, flat top and stainless steel legs and feet
- 3" backsplash protects walls
- Open front; can hold up to 3 full size glass racks
- Perfect for bar service settings

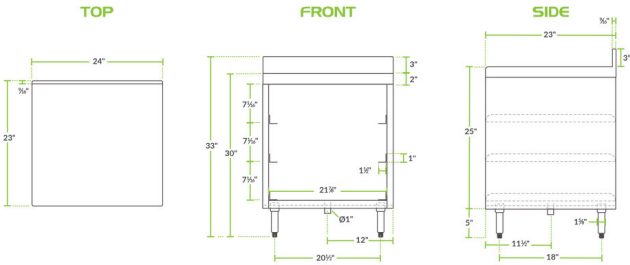
Certifications



Technical Data

Material	Stainless Steel
Top Style	Flatboard
Type	Glass Rack Storage Units

Plan View



Notes & Details

Store your glassware and keep it close enough for easy access with this Regency stainless steel flat top glass rack storage unit. An enclosed base cabinet is fitted with glass rack slides and can hold up to three racks at once. A 3" backsplash, integrated drain, and flat stainless steel top all allow for easy cleanup. Plus, the top of the cabinet is a convenient place for drying glasses or unloading glass racks.

This glass rack storage unit is constructed of all 18 gauge type 304 stainless steel for long-lasting durability and corrosion-resistance. Additionally, the 1" IPS drain is included for convenient installation.

With 6" stainless steel legs that fit into stainless steel sockets and have bullet feet, this unit keeps glass racks up off the floor for sanitary storage. Plus, the legs give you enough clearance to clean beneath the cabinet.