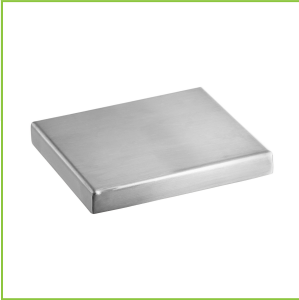




Regency 7 1/2" x 6" Stainless Steel Surface-Mount Beer Drip Tray

#600BDT6SS



Technical Data

Width	7 1/2 Inches
Depth	6 Inches
Height	3/4 Inch
Color	Silver
Features	Dishwasher Safe NSF Listed
Gauge	18 Gauge
Material	Stainless Steel
Mounting Style	Surface Mounted

Features

- Ideal spot to set drinks before serving
- 18 gauge, type 304 stainless steel
- Removable, easy-to-clean perforated grate
- Ideal for high-volume bars and clubs
- Prevents drips and spills

Certifications



Dishwasher Safe



NSF Listed


## Technical Data

Shape	Rectangle
Stainless Steel Type	Type 304
Type	Drip Trays

## Notes & Details

Keep the countertops and floors clean in your bar or club with the help of this Regency beer drip tray. This product provides the perfect spot for bartenders to set drinks before serving to catch any overflow and prevent drips and spills before they reach the surrounding surfaces. This ensures safety by minimizing the risk of your bartenders or customers slipping on the wet floor. This drip tray is designed to be surface-mounted under beer taps and on countertops, making a secure and stable platform for filled glasses.

This item is made with non-corrosive 18 gauge, type 304 stainless steel. It includes a removable, perforated top grate for easy cleaning and maintenance. Perfect for catching spilled drinks and beer foam, equip your high-volume bar, pub, or club with this drip tray to keep your space sanitary and up to code!

 **WARNING:** This product can expose you to chemicals including lead, which are known to the State of California to cause cancer and birth defects or other reproductive harm. For more information, go to [www.p65warnings.ca.gov](http://www.p65warnings.ca.gov).