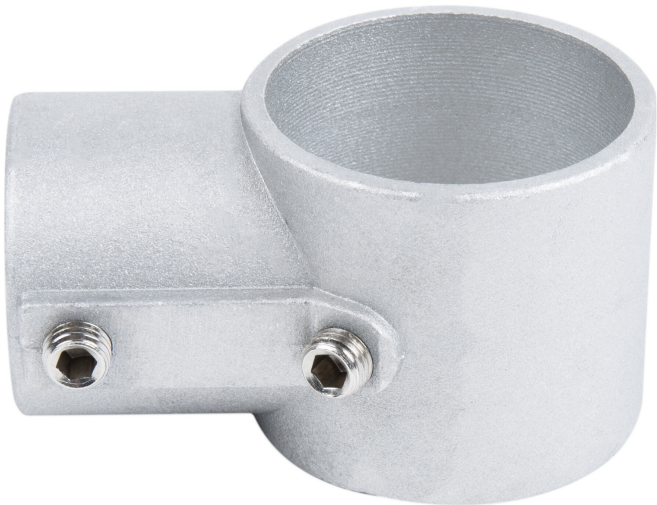




Regency Aluminum Joint Socket with One Connection
#600AJS1



Technical Data

Length	3 Inches
Width	1 7/8 Inches
Type	Brackets and Hardware

Features

- Made of durable aluminum
- Connects cross bracing to equipment legs
- Connection point for one cross brace

Notes & Details

Replace a broken or missing joint socket with this Regency aluminum joint socket with one connection! Designed to help make sure your stainless steel work table or compartment sink is stable and steady, this joint socket connects to a leg of the equipment and allows one end of a cross brace to be locked into place with set screws.