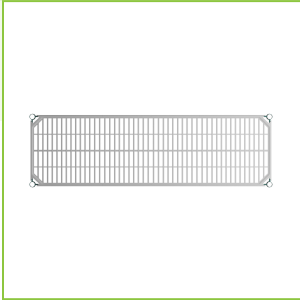
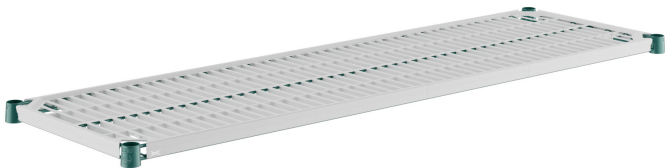




Regency+ CC/460DM1860 18" x 60" Green Epoxy Shelf with Polymer Drop Mat

#460DM1860



Technical Data

Length	60 Inches
Width	18 Inches
Capacity	450 lb.
Color	Green
Component Type	Shelves
Features	Dishwasher Safe NSF Certified Rust-Resistant
Finish	Drop Mat
Style	Vented

Features

- Ideal for use in moist / humid environments like walk-ins and dish rooms
- Removable polymer shelf mat is dishwasher-safe for easy cleaning to save time and labor
- Commercial-grade construction built to accommodate up to 450 lb. of evenly distributed weight
- Polymer shelf mat protects against rust and scraping from polycarbonate containers
- Includes (1) 18" x 60" green epoxy drop mat shelf with (4) pairs of split sleeves

Certifications



NSF Certified



Dishwasher Safe


Technical Data

Material	Epoxy-Coated Polymer
Type	Components Shelf Mats Shelves
Usage	All Environments Dry Environments Kitchens Moist Environments Walk-Ins

Notes & Details

This Regency+ 18" x 60" green epoxy shelf with polymer drop mat is ideal for use in a wide array of applications. Made of a corrosion-resistant epoxy material that resists damage from chemicals and harsh environments, it won't rust even in damp environments to provide stability, strength, and cleanability along with a great value. Its simple, classic design makes it a great choice for use in back-of-the-house environments, and the epoxy coating is great for use in all environments including refrigerators, freezers, and ware washing areas. When combined with additional shelves, posts, and accessories (sold separately) this Regency+ shelf is capable of holding up to an impressive 450 lb. of evenly distributed weight.

This shelf features a high-quality, commercial grade design to deliver the reliable performance every business expects and needs. To make sure your shelving will meet the needs of your business, this shelf can be adjusted up and down in 1" increments on the compatible posts (sold separately). The shelf comes with an open grid mat that provides greater air flow and light penetration. This design makes it suitable for storing a wide variety of items, providing added convenience. Since the mat is also removable, you can quickly take off the mat for cleaning. In fact, the mat can even be run through a commercial dishwasher to save you time and effort during the cleaning process.

 **WARNING:** This product can expose you to chemicals including lead, which are known to the State of California to cause cancer and birth defects or other reproductive harm. For more information, go to www.p65warnings.ca.gov.