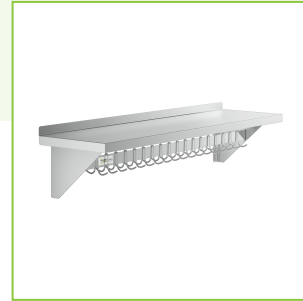




Regency 15" x 60" Stainless Steel Wall Mounted Pot Rack with Shelf and 18 Galvanized Hooks

#600PS1560



Technical Data

Length	60 Inches
Width	15 Inches
Height	12 Inches
Capacity	395 lb.
Color	Silver
Features	NSF Listed
Gauge	18 Gauge
Material	Stainless Steel

Features

- Durable stainless steel construction
- Maximum capacity of 395 lb.
- Comes with 18 galvanized hooks
- 15" deep shelf provides additional storage
- Easily mounts to a wall for convenient storage (mounting hardware sold separately)

Certifications



Technical Data

Number of Hangers	18 Hangers
Style	Solid
Type	Wall Shelves with Pot Racks

Notes & Details

This 60" wall mounted pot rack from Regency blends the convenience and practicality of a wall shelf and a pot rack for a versatile storage solution for your commercial kitchen! The 15" deep top shelf is a perfect place for boxes of gloves, kitchen timers, spices and other commonly used items, while the pot rack bar comes with 18 hooks to keep your most commonly used pots and pans close at hand.

Both the shelf and brackets are made of 18 gauge type 430 stainless steel for durability and corrosion resistance. The 18 hooks along the bottom of the shelf are galvanized to protect against rust and can support up to 395 lb. The sturdy mounting brackets are pre-drilled for easy installation (hardware sold separately).

 **WARNING:** This product can expose you to chemicals including lead, which are known to the State of California to cause cancer, birth defects, or other reproductive harm. For more information, go to www.p65warnings.ca.gov.