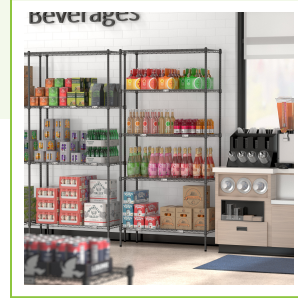




## Regency NSF 96" Black Epoxy Post

#460EBP96



### Technical Data

Height	96 Inches
Post Diameter	1 Inch
Component Type	Shelving Posts
Features	NSF Certified
Finish	Black Epoxy
Material	Epoxy-Coated Steel
Style	Stationary
Type	Components Shelving Posts

### Features

- Compatible with screw-in casters only (sold separately)
- Good for use in moist / humid environments
- Durable zinc-plated construction with black epoxy coating
- Marked in intervals for easy assembly and customization
- Foot included

### Certifications



## Technical Data

Usage	All Environments Dry Environments Front of House Garage Moist Environments Retail Stock Rooms Warehouse
-------	------------------------------------------------------------------------------------------------------------------------------

## Notes & Details

Use this Regency 96" black epoxy shelving post to help outfit your facility with convenient storage! When combined with Regency black epoxy shelves and accessories (sold separately), this post enables you to create a customized storage space to best meet your facility's needs. Thanks to its interval markings, this post not only allows you to adjust your shelves after your shelving unit has been assembled, but also ensures that you can accommodate items of various shapes and sizes.

In addition to being ideal for dry storage environments, this post is also suitable for use in walk-in coolers, warewashing areas, and other moist environments. Its stationary design makes it especially convenient for long-term storage applications, while its adjustable leveling foot makes it easy to accommodate uneven surfaces. Combining high-quality construction and exceptional durability, Regency shelving delivers the long-lasting convenience and value that your business needs and expects. Compatible only with screw-in casters (sold separately).