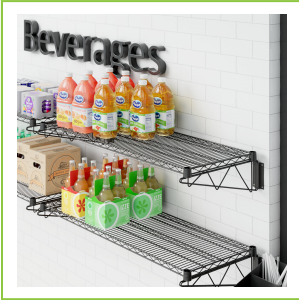
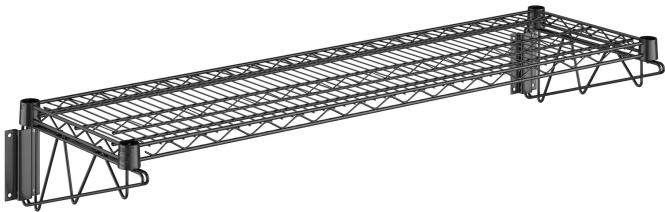




Regency 14" x 48" Black Epoxy Wire Wall Mount Shelf
#460EB1448WSK



Technical Data

Length	48 Inches
Width	14 Inches
Assembly Options	Assembly Required
Capacity	360 lb.
Color	Black
Finish	Epoxy
Material	Epoxy-Coated Metal Wire Steel

Features

- Suitable for moist/humid environments
- Built to accommodate up to 360 lb. of evenly distributed weight
- Wire design provides ample airflow around shelf contents
- Classic style ideal for back-of-house, front-of-house, retail, or office applications
- Mounting brackets with 1/4" diameter wire; includes concrete installation mounting hardware

Certifications



Technical Data

Style	Vented Wall Mounted
Type	Wall Shelf Kits Wall Shelves
Usage	All Environments Dry Environments Front of House Garage Moist Environments Retail Stock Rooms Warehouse

Notes & Details

Perfect for a variety of commercial applications, this Regency 14" x 48" wall mount black epoxy wire shelf provides convenience, durability, and space-efficient storage. It features black epoxy-coated brackets and a 14" x 48" shelf, making it suitable for dry, moist, or humid environments. Its wire design also ensures ample airflow around its contents, which is particularly important in moist locations. Plus, the shelf accommodates up to 360 lb. of evenly distributed weight and boasts a commercial-grade construction for maximum durability. From the back-of-house to the front-of-house, the shelf is great for storing supplies or for merchandising retail inventory! Because of the black design, it's especially well suited for retail use.

Assembly is fast and easy so that it can be used shortly after delivery. For secure installation, the wall brackets come with concrete installation mounting hardware.

 **WARNING:** This product can expose you to chemicals including lead, which are known to the State of California to cause cancer and birth defects or other reproductive harm. For more information, go to www.p65warnings.ca.gov.