

# Tero

As close as you can get to actual terracotta – without sacrificing the smooth, non-porous surface and mechanical resistance of porcelain. Tero has a rich, old world look, yet is firmly rooted in the now.



## SCALLOP PLATE



RETGDSP33 13" D 6

## SHOW PLATE



RETFDFP33 12 1/2" D 6

## FLAT PLATES



RETANFP29 11 1/2" D 12  
 RETANFP27 10 3/8" D 12  
 RETANFP24 9 1/3" D 12  
 RETANFP21 8" D 24  
 RETANFP17 6 1/2" D 24

## ROUND FLAT PLATES



RETLUFP29 11 1/2" D 12  
 RETLUFP27 10 3/8" D 12  
 RETLUFP24 9 1/4" D 12  
 RETLUFP21 8 1/2" D 12  
 RETLUFP19 7 1/2" D 24  
 RETLUFP16 6 3/4" D 24

## DEEP PLATES / PASTA BOWLS



RETLUDP27 35 1/2 oz 10 3/8" D 12  
 RETLUDP24 22 oz 9 1/3" D 12  
 RETLUDP21 16 1/2 oz 8 1/3" D 12

## DEEP PLATES / PASTA BOWLS



RETANDP30 18 1/2 oz 11 1/2" D 6  
 RETANDP26 11 1/2 oz 10 1/3" D 12  
 RETANDP24 8 3/4 oz 9 1/2" D 12

## OVAL PLATES



RETANOP38 15" L 10 3/8" W 6  
 RETANOP32 12 3/8" L 8 1/4" W 6  
 RETANOP26 10 1/4" L 7 1/2" W 12  
 RETANOP22 8 3/8" L 5 5/8" W 12

## CEREAL BOWL



RETANCB13 21 1/2 oz 5 3/4" D 6

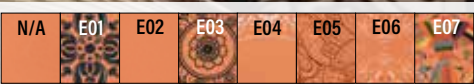
## CUPS



RETEACU23 7 1/2 oz 2 5/8" D 12  
 RETEACU20 6 3/4 oz 2 1/2" D 12  
 RETEACU09 3 oz 2 1/4" D 12



Additional pattern information. See page 206



**CUPS W/O HANDLE**



**RETEACU23M** 7 1/2 oz 2 3/8" D 12  
**RETEACU20M** 6 3/4 oz 2 1/2" D 12  
**RETEACU09M** 3 oz 2 1/2" D 12

**ESPRESSO SAUCER**



**RETANSA13M** 5" D 12  
 Compatible with RETEACU09M, RETEACU09

**SAUCER**



**RETANSA15** 6" D 12  
 Compatible with RETEACU23, RETEACU20, RETEACU23M, RETEACU20M

**MUG**



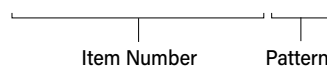
**RETEAMG30** 10 1/2 oz 3 1/2" D 12

**HOW TO GET THE CORRECT PRODUCT REFERENCE:**

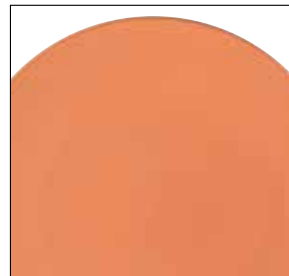
Add the pattern code after the item number from the listing to get the complete product reference.

Example:

Scallop Plate, 13", Ostia = **RETGDSP33E01**



**STOCKED TERO PATTERNS:**



N/A - Prima



E01 - Ostia

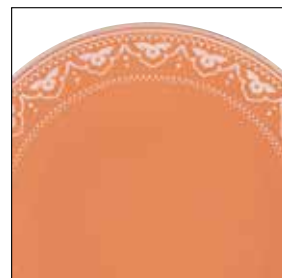
**MADE TO ORDER TERO PATTERNS:**



E02 - Denia



E02 - Alexandria



E04 - Annaba



E05 - Catania



E06 - Granada



E07 - Chapala



Pork carnitas enchiladas

“ The moment we laid eyes on the Baantna line, we knew that was what we wanted. The color and patterns are so fun and really add to the experience and story we are trying to create. We also love how well it holds heat. ”

– Nicholas Shaw, Corporate Chef  
 Cinco Ninos, Kalahari, Wisconsin Dells, Wis.

