

# FULLY-AUTOMATIC WINDOWS

## BI-PARTING



THRU-BEAM PHOTO-ELECTRIC EYE-BAR

MIAMI-DADE COUNTY  
APPROVED

NOA # 21-0205.08  
FBC # FL-23326

### STANDARD FEATURES

- Shipped fully-assembled and ready to install
- Touchless operation with thru-beam photo-electric eye bar
- 1/4" clear tempered safety glass
- Weather resistant and sealed to protect from the elements
- Dark bronze or clear anodized aluminum
- Corrosion resistant material: Anodized aluminum and stainless steel
- Security locking systems
- Easy manual operation upon power failure
- Maximum security hook-bolt locks
- Warranty backed with Nationwide Service Centers
- ETL Listed

### THRU-BEAM PHOTO-ELECTRIC EYE-BAR

Activated when the attendant stands between the emitter and receiver. Available on all electric sliders and is best used where there is limited space or tighter working conditions.

### OPTIONAL FEATURES

- Custom colors available
- Reduced service openings for areas requiring 432 sq. inches
- Custom transoms and overall window sizes
- Various glazing options (B/R, Insulated, Tinted, etc)

### MODEL BP-7241E / BP-7236E / BPSC-7241

This 72" wide bi-parting electric slider has one of the largest service openings in the drive-thru arena. With a generous 29-1/2" (w) x 32" (h) opening, you can effectively operate with two workers in one window or pass large items such as dry cleaning, large pizza boxes, auto parts, etc. This window comes standard with a push button opening/closing device, however, our thru beam sensors can be used to operate this unit. We also make a manual, self-closing version of this window (Model #BPSC-7241) as well as a 36" tall unit (Model #BP-7236E).

Dimensions: *BP-7241E*

*Service Opening: 29-1/2"W x 32"H*

*Rough Opening: 72-1/2"W x 41-1/2"H*

*BP-7236E*

*Service Opening: 29-1/2"W x 24-1/4"H*

*Rough Opening: 72-1/2"W x 36-1/2"H*

*BP-7252E*

*Service Opening: 29-1/2"W x 30"H*

*Rough Opening: 72-1/2"W x 52-1/2"H*



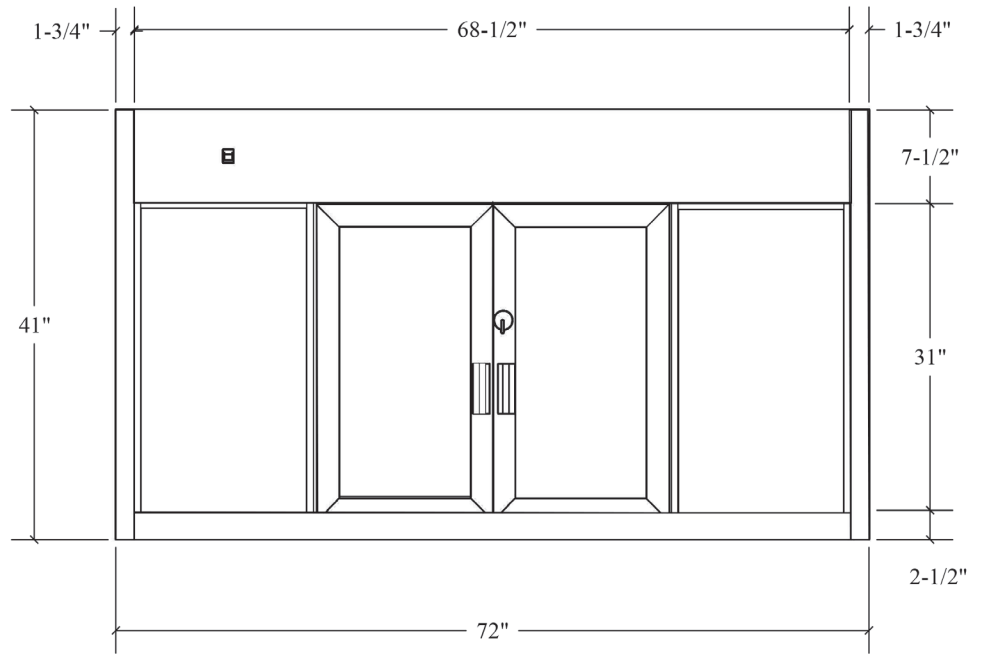
**MODEL BP-7241E / 7241E IP**

ROUGH OPENING: 72-1/2"W x 41-1/2"H

SERVICE OPENING: 29-1/2"W x 32"H

IMPACT VERSION

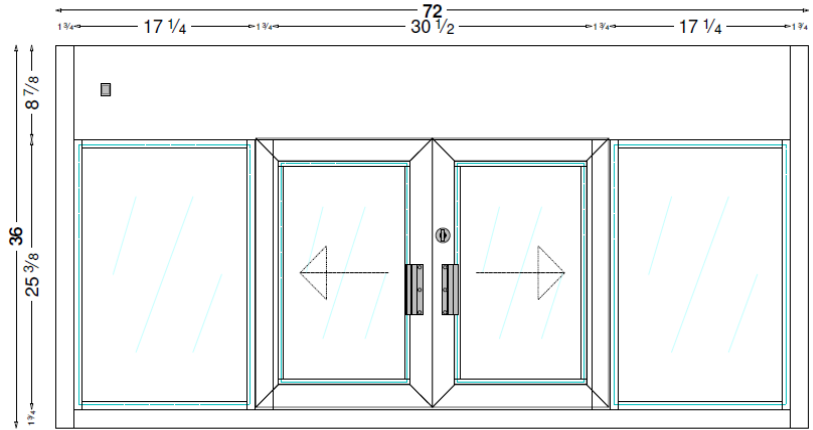
SERVICE OPENING: 27"W x 27"H



**MODEL BP-7236E / 7236E IP**

ROUGH OPENING: 72-1/2"W x 36-1/2"H

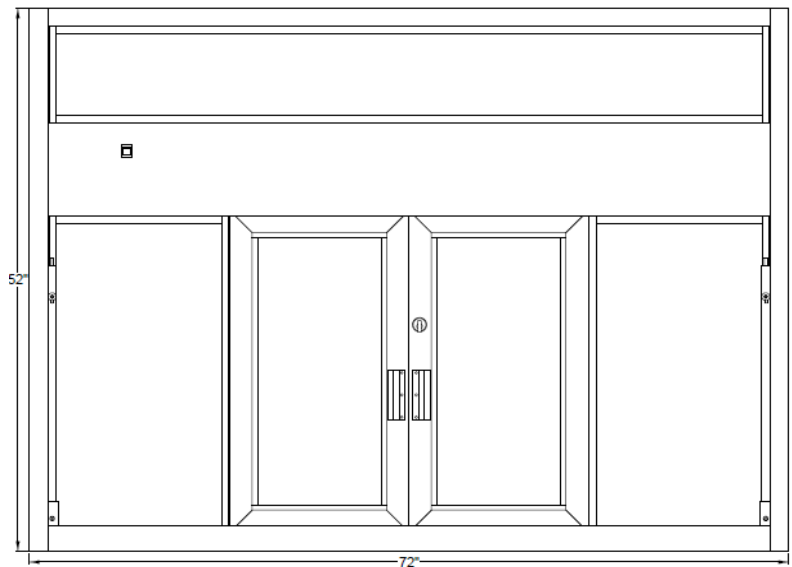
SERVICE OPENING: 29-1/2"W x 24-1/4"H



**MODEL BP-7252E**

ROUGH OPENING: 72-1/2"W x 52-1/2"H

SERVICE OPENING: 29-1/2"W x 30"H



ALL QUIKSERV PRODUCTS ARE SHIPPED FULLY-ASSEMBLED and READY TO INSTALL. EACH ELECTRICAL UNIT IS SHIPPED WITH A FOUR FOOT (4') BX DROP.