

# **PakTech**<sup>®</sup>

## **CCA 120/180**

### **CAN CARRIER APPLICATOR**

*On demand Can Carrier application  
optimized to 30 cycle per minute*



### **DESIGN**

- Dual Lane applicator to apply PakTech Quad Pak, 6 Pak and 8 Pak Can Carriers
- The system applies Can Carriers to filled beverage cans
- Cans accumulate in two rows
- Grippers collate cans for carrier application
- Cans are pneumatically driven through the application area
- UL listed industrial controls enclosure and CE certified machine
- Slide or straight feed conveyor layout options
- 38" to 54" Top of conveyor height adjustment

### **STANDARD COMPONENTS**

- Anodized aluminum feed and application assembly
- Fully welded brushed stainless steel frame construction
- Festo pneumatic components
- Allen Bradley, Keyence and IFM sensors
- Allen Bradley CompactLogix™ PLC
- Allen Bradley HMI Touchscreen
- Stainless steel slope top 4X controls enclosure

### **OPERATION**

- 30 cycle per minute on demand Can Carrier application rate
- Adjustments for 12oz and 16oz can application
- Operator required for manual loading of Can Carrier feeder
- Tool-less changeover between Can Carrier types
- Selectable in-line bypass mode

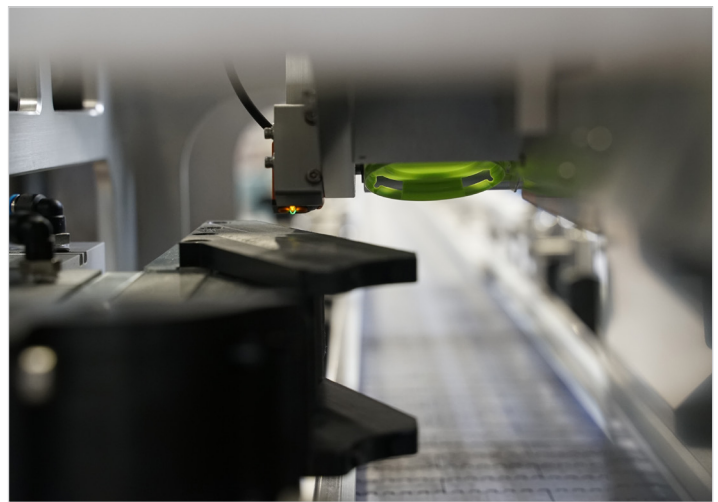
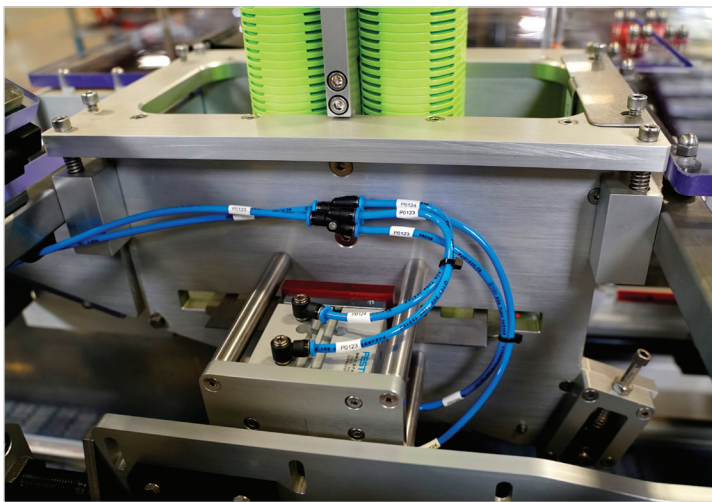
### **OPTIONS**

- 19.2oz can change over parts
- Sleek can change over parts
- Slim can change over parts
- Siemens PLC and HMI

### **UTILITIES**

- 120V +/- 10% single phase @ 20 AMPS
- 5.5 Bar air @ 2.0 cfm and 8 SCFM at
- 20 cycles/minute (20% safety margin)
- 24 VDC control power





\* Trademark of Rockwell Automation, Allen-Bradley  
Specifications and components are subject to change per design requirements



CAN CARRIER APPLICATOR // CCA120/180