

STEEL DAVIT CRANE

Individually tested and certified at 125% W.L.L

OZ500DAV, OZ1000DAV, OZ2500DAV



**500 lbs., 1000 lbs.
and 2500 lbs. Capacity**

Features

- 360 degree rotation
- 4 different boom height adjustments
- 500, 1000, and 2500 lb. ratings available
- Manual Din rated CE winch with brake (Includes power drill adaptor)
- Corrosion Resistant Zinc plated finish
- Headache Ball (OZHB10) available and sold separately
- Carrying case (OZRB1) available and sold separately

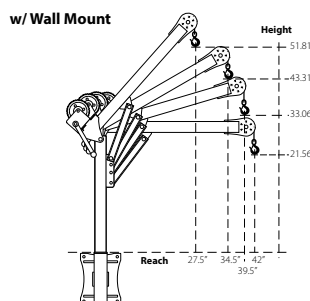
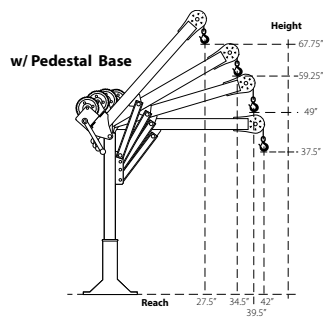
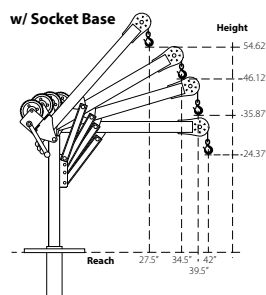
WIRE/SYNTHETIC ROPE ASSEMBLIES

(sold separately) Custom length available.

See wire rope assembly page 34

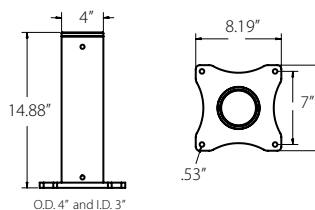
OZ1000DAV shown with optional
OZPED2 Pedestal base and
OZGAL.25-55B wire rope assembly
Bases and cable assemblies sold separately

OZ500DAV DIMENSIONS

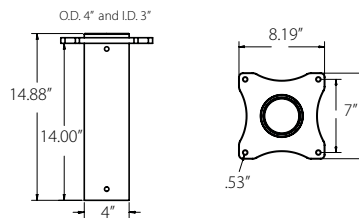


OZ500DAV BASES (sold separately) Comes with mounting template.

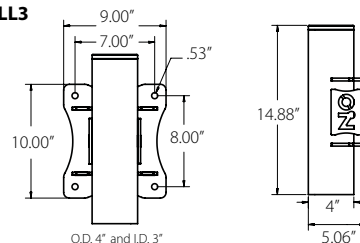
OZPED3



OZSOC3



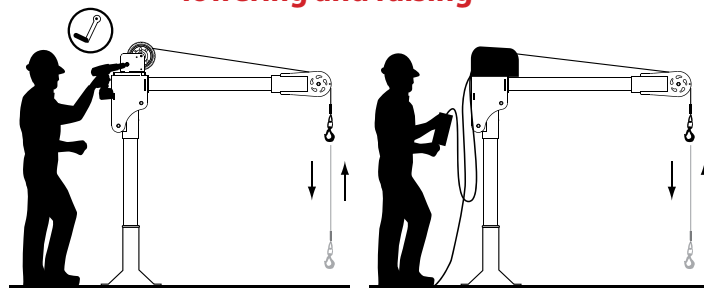
OZWALL3



Dimensions and illustrations are for reference only and subject to change without notice.



Options for faster lowering and raising



Detach winch handle for drill option

AC and DC power winches available
See page 25

Weight

Weight (excluding winch)	Boom	Mast	Net
OZ500DAV (lbs)	27	23	50
OZ1000DAV (lbs)	35	29	64
OZ2500DAV (lbs)	130	64	194

OZ500DAV & OZ1000DAV

Manual winch: 3/16" - 80 ft max. lift length • 1/4" - 55ft max. lift length

AC/DC Electric Winch: 3/16" - 90 ft max. lift length • 1/4" - 45ft max. lift length

OZ2500DAV

Manual winch: 1/4" Synthetic - 75 ft max. lift length • 5/16" Ultrex - 55ft max.

lift length • 3/8" Synthetic - 45ft max. lift length

Load Ratings

*OZ500DAV based on 3/16" wire & synthetic rope

1st. Layer 500 lbs

Mid. Drum 500 lbs

Full Drum 500 lbs

Load Rating reduction is based on force required to crank manual winch. See page 25 for electric winch load ratings.

