

# AC & DC ELECTRIC WINCHES

## Features

- Two-braking system mechanical and dynamic
- Overload protection
- Fully-enclosed gearing
- Machine cut and hardened gears
- Lightweight
- Emergency handle
- Easily bolts on to OZ davit cranes

## Capacity

OZACW (115V AC): 1200 lbs.

OZDCW (12V DC): 1200 lbs.

Custom Overload Settings Available

## Maximum Drum Capacity

3/16" diameter wire rope=90' lift  
1/4" diameter wire rope=45' lift

## Pendant/ Power Cord Length

115V AC: 10' Pendant / 10' Power Cord

12V DC: 10' Pendant / 25' Power Cord

## Net Weight

OZACW – 22 lbs.

OZDCW – 24 lbs.

## Motor Full Load AMPS

OZACW – 1.0 HP

OZACW – 10A

OZDCW – 0.6 HP

OZDCW – 70A



OVERLOAD  
PROTECTED



OZACW

## Standard - CE



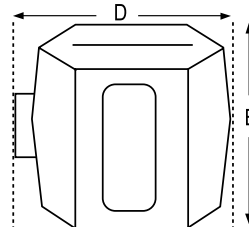
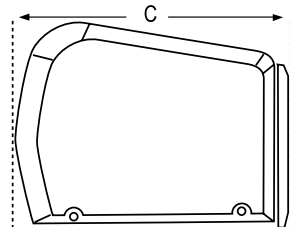
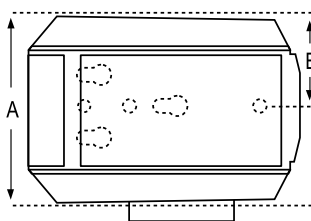
OZDCW

3 minutes of  
continuous use  
15 minute cool down

Load Capacity Based on the Amount of Cable	3/16" Cable	1/4" Cable
1st Layer (lbs)	800	1200
Mid. Drum (lbs)	800	1120
Full (lbs)	800	850

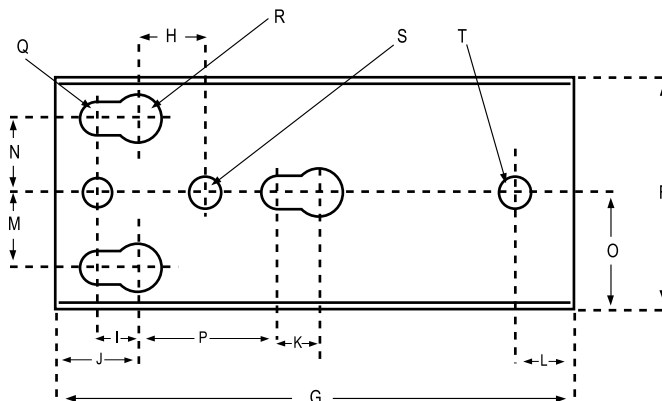
\*Wire rope not included - see available options page 34

Winch Speed Based on Load & Cable on the Drum	First Layer	Full
AC, No Load (ft/min)	23	35
AC, Full Load (ft/min)	12	16
DC, No Load (ft/min)	21	33
DC, Full Load (ft/min)	5.5	8



### Dimensions – All Models (in)

A	7.43
B	3.57
C	10.81
D	8.18
E	8.12



## Mounting Plate

### Mounting Plate Dimensions – All Models (in)

F	3.62	K	.62	P	3
G	8.68	L	1	Q	.53
H	1.18	M	1.25	R	.78
I	.625	N	1.25	S	.42
J	1.37	O	1.81	T	.50

Dimensions and illustrations are for reference only and subject to change without notice.



**WARNING**  
CANCER AND REPRODUCTIVE HARM  
Some products may contain chemicals known  
to the state of California to cause cancer,  
or birth defect or reproductive harm.  
[www.P65Warning.ca.gov](http://www.P65Warning.ca.gov)