

General Information

Project Name: _____

Consultant: _____

Item #: _____

Model #: _____

Quantity: _____



Shown with
SG Banded Grating
(Banded Grating
Runs Lengthwise)



Specifications

NWR Model Floor Water Receptacle is constructed of 16GA Type 304 stainless steel one-piece construction. Horizontal corners and the trough is creased toward a waste outlet with a stainless steel beehive strainer and a 3" OD tailpiece.

Recessed flange and 1" deep ledge for IMC grating are integral with the unit. Unit is 6" wide and 4" deep.

Joints are TIG welded and leak-proof. Exposed surfaces finished brush satin.

NWR banded grating runs lengthwise.

Product Guide

Use for Commercial and Institutional Buildings or large food prep facilities.

Unit is generally used underneath Ice Machines or in front of walk-ins or large water discharge areas, in tight spaces.

Flexible design such as custom depths make this a versatile drain trough.

Recessed flange supports floor tile and provides a grout pocket.

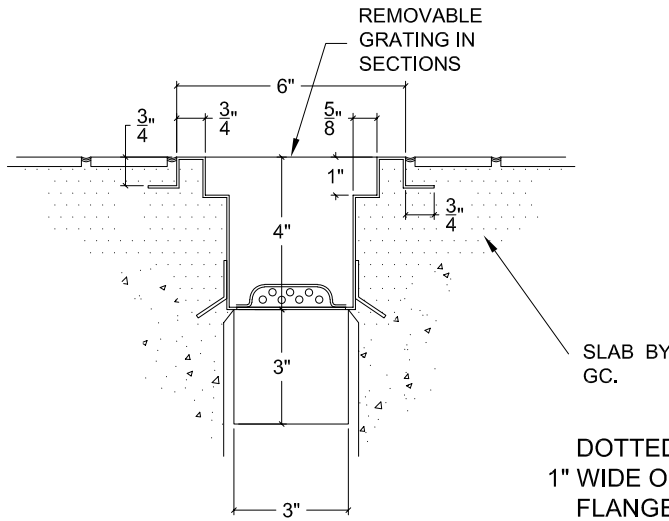
Setting frame for waterproof membrane and/or integral seepage flange with "weep" holes can be added for wet floor areas.

Options

- ☐ **DOD** - 1" or 2" OD Tube (circle one)
- ☐ **WTO** - Waste Tube over 3" Long
- ☐ **AW** - Additional Wastes
- ☐ **WCP** - Waste Cup Strainers
- ☐ **BH** - Beehive Strainers (Each)
- ☐ **OCW** - Off Center Waste (Each)
- ☐ **ST12** - Scrap Tray Up to 18" Wide
- ☐ **PWT** - Perforated Waste Pipe
- ☐ **SF-2** - Special Size Setting Flange 2" Deep
- ☐ **SF-4** - Special Size Setting Flange 2" to 4" Deep
- ☐ **FSG** - Seepage Flange w/ Weep Holes
- ☐ **ST20** - Scrap Tray 20" Long
- ☐ **DSE** - Drain on the End
- ☐ **ROD** - Rim on Drain
- ☐ **BSPC** - Basket Strainer w/ Handle & Chain
- ☐ **BXD** - Box Type Drain
- ☐ **BSX** - Beehive Strainer for Box Drain
- ☐ **GA-12** - 12GA Upgrade
- ☐ **SG-PR** - Perforated Grating

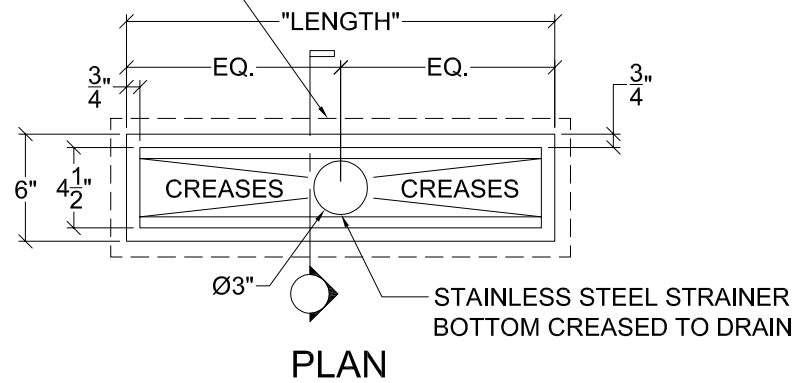
*See Price List for more options

DRAWINGS



**SECTION THRU MODEL "NWR"
STAINLESS STEEL TROUGH**

DOTTED LINES INDICATE
1" WIDE OUTSIDE INTEGRAL
FLANGE. (SEE SECTION)



PLAN

Box Out Size

For box out dimensions, please see installation manual.

6" FLOOR WATER RECEPTACLES

Model	Size (W x L)
□ NWR-24	6" x 24"
□ NWR-30	6" x 30"
□ NWR-36	6" x 36"
□ NWR-48	6" x 48"
□ NWR-60	6" x 60"
□ NWR-72	6" x 72"
□ NWR-84	6" x 84"
□ NWR-96	6" x 96"
□ NWR-108	6" x 108"
□ NWR-120	6" x 120"

Note: For longer lengths, see price list or contact factory.

Standard troughs up to 96" have one (1) waste at center. Over 96", troughs have two (2) wastes equidistant.
Specifications subject to change without notice.

NWR-014 0524