

**National
Public
Seating**



800.261.4112

www.nationalpublicseating.com

SCIENCE LAB TABLES

Full line of science tables made for the most rugged environments.



Wood Tables
Series



Steel Tables
Series



Signature Tables
Series



Designer Tables
Series



PRODUCT INFO

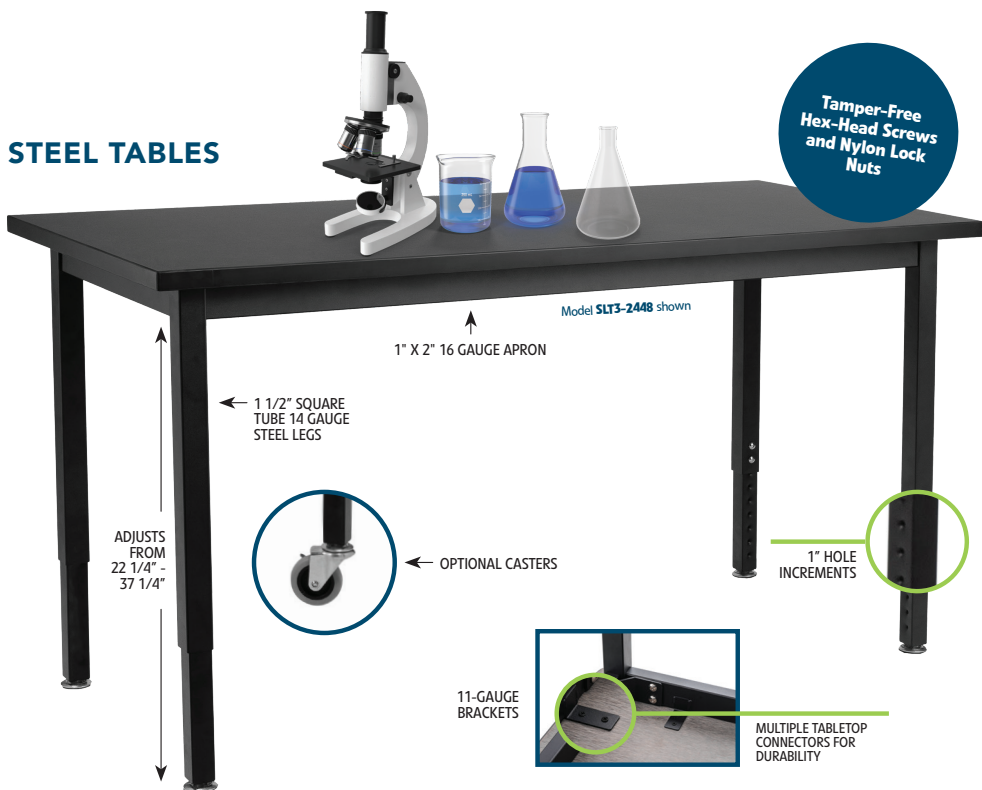
WOOD TABLES

Model SLT1-2448 shown



- Tops available in HPL, Chem-Res, Phenolic, and Whiteboard.
- Solid Ash Wood frame.
- 13 gauge steel corner braces.
- Metal on metal double bolt leg connection using threaded lock nuts.
- Rubber liquid-protecting leg boots.
- Adjustable glides for accurate floor leveling.
- Weight Capacity 500lbs.
- Optional heavy duty 3" locking casters available.

STEEL TABLES



- Tops available in HPL, Chem-Res, and Phenolic
- 16 gauge steel frame apron and 14 gauge legs
- 11 gauge steel tabletop support tabs and corner brackets fuse as one with 4 heavy-duty tamper-free Loctite hex screws
- Height adjusts in 1" increments
- Leg-base is fastened to the tabletop with 4 heavy-duty screws and a strong welded hangar bolt
- Legs connect to the frame corner brackets with industrial-grade nylon-insert lock nuts and come with simple-adjust glides
- Weight Capacity: 500lbs

SIGNATURE TABLES



Exceeds 1800 Wear Cycles and over 125" Ball Impact Resistance

- Tops available in HPL, Chem-Res, and Phenolic
- Solid 4 1/2" ash wood aprons.
- 11 gauge leg-bases are fastened to the tabletop with 6 heavy-duty screws.
- Legs are ADA compliant as they adjust in 3/4" increments from 27"-42" H (with spacer provided).
- Legs are available in light oak or textured black.
- All legs come standard with simple-adjust glides.
- Optional 2 1/3" locking casters available.
- Optional book box available.



DESIGNER TABLES



- Tops available in HPL, Chem-Res, Phenolic, Butcher Block, and White Board.
- Tables adjust in 3/4" increments from 27"-42" H (with spacer provided) meeting ADA requirements.
- The 11 gauge leg-bases are fastened to the tabletop with 6 heavy-duty screws.
- All legs come standard with simple-adjust glides.
- Optional 2 1/3 locking casters available.
- Exceeds 1800 Wear Cycles and over 125" Ball Impact Resistance
- Table can easily be set on an incline for physics experiments.
- The under-table hat support provides 500lbs. weight capacity.

TABLE TOP OPTIONS



Butcher Block

CORE MATERIAL

Solid Hard Maple Edge Grain Top

FINISH

Proprietary Urethane-Based Satin Finish

EDGE

Square

THICKNESS

1 3/4"



Whiteboard

CORE MATERIAL

Industrial Grade Particleboard with High-Pressure Laminate (HPL) Whiteboard Top

FINISH

Gloss Finish

EDGE

3mm PVC Edgebanding

THICKNESS

1 1/4"



HPL

CORE MATERIAL

Industrial Grade Particleboard

FINISH

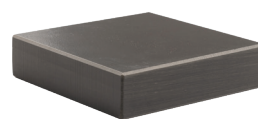
Black, Matte Finish

EDGE

Rounded Vinyl T-Mold

THICKNESS

1 1/8"



Chem-Res

CORE MATERIAL

Industrial Grade Particleboard with Chemical Resistant Laminate

FINISH

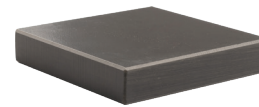
Black, Matte Finish

EDGE

3mm Edgebanding

THICKNESS

1"



Phenolic

CORE MATERIAL

Solid Phenolic Resin

FINISH

Black, Matte Finish

EDGE

1/8" Bevel Edge

THICKNESS

3/4"

MODEL	DESCRIPTION
SLT1	30"H WOOD TABLE
SLT2	36"H WOOD TABLE
SLT3	STEEL TABLE
SLT4	SIGNATURE TABLE W/ BLACK LEGS
SLT5	SIGNATURE TABLE W/ OAK LEGS
SLT6	DESIGNER TABLE

TOP	DESCRIPTION
B*	BUTCHER BLOCK
W**	WHITEBOARD
H	HIGH-PRESSURE LAMINATE
C	CHEM-RES
P	PHENOLIC

*ONLY FOR SLT6

**ONLY FOR SLT1, SLT2, & SLT6

SIZE	DESCRIPTION
2448	24" X 48"
2454	24" X 54"
2460	24" X 60"
2472	24" X 72"
3060	30" X 60"
3072	30" X 72"
4260*	42" X 60"

* ONLY FOR SLT1 & SLT2

ADD-ON	DESCRIPTION
B*	ADD BOOK BOXES
C**	ADD CASTERS & STRETCHERS

*ONLY FOR SLT1, SLT2, SLT4, & SLT5

**STRETCHERS INCLUDED FOR SLT1 & SLT2

MODEL NUMBER CONFIGURATION



ALL TABLES COME WITH LEVELING GLIDES
OPTIONAL CASTERS AVAILABLE