

TESTING DATA

Test	Test Description	Results
Compression Deflection	Test specimen is subjected to varying compression load levels and the resulting deflection was measured. The greater the deflection, the better the anti-fatigue properties. (Inches)	.658" (40 lbs/sq. inch)
Coefficient of Friction ASTM C1028-96	A neolite heel assembly with a predetermined load is pulled horizontally with a dynamometer to measure the force required to cause the assembly to slip.	.64
Abrasion Resistance ASTM D3884-01	Test specimen is subjected to the rubbing action of two abrading wheels under controlled conditions. Results measured in Weight loss (Grams)	11.74 Grams (46.3%) (5,000 cycles)
Elongation ASTM D412	Test specimen is stretched at a specified rate until breaking point. The results are measured in % of size increase at breaking point.	108%
Tear Strength	This test is designed to measure the force required to initiate tearing. The maximum stress, usually found near the outset of tearing, is recorded as the tear resistance in pounds (force)	Test Speed: 2" minute Avg. Tear Strength - 25.1 lbs.
ASTM D1004	Critical Radiant Flux	.56 Watts/Cm2

*Testing performed by an independent test laboratory.

NOTRAX®

5655 West 73rd Street
Chicago, IL 60638

PHONE: (800) 621-2802

FAX: (800) 322-7105

EMAIL: saleschicago@checkers-safety.com

www.notrax.com



A PRODUCT OF:



Justrite Safety Group is the leading source of safety equipment for flammables and hazardous materials storage and handling, asset protection, environmental protection spill containment, absorbents, specialized chemical storage, cable management, safety showers and eye/face washes, matting, and vehicle safety equipment. Learn more at Justrite.com, Checkers-safety.com, and Notrax.com.



Justrite Safety Group

417 - BUBBLE SOF-TRED™ W/DYNA-SHIELD®

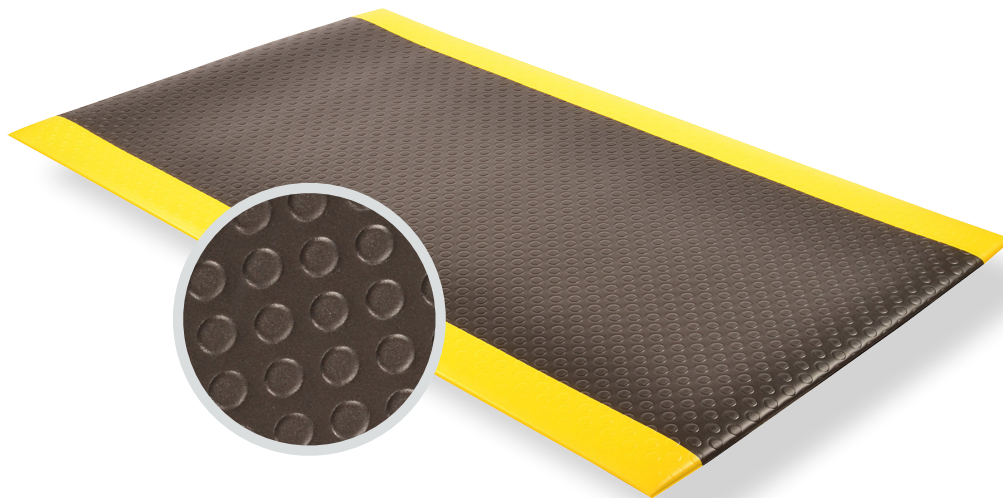
PRODUCT INFORMATION BROCHURE





For over 70 years, the name Notrax® has meant superior quality, service, and innovative products. Now this brand is a cornerstone of Justrite Safety Group, offering the widest selection of products to a variety of markets and applications including entrance mats, anti-fatigue/safety mats, and products designed specifically for use in professional food service environments. Notrax® offers a complete selection of floor matting options to meet any application requirement, quality expectation, and budget.

- **Track record of manufacturing high quality mats for over seventy years**
- **All products are manufactured in ISO certified facilities**
- **Notrax® offers anti-fatigue matting, entrance matting, safety matting, food service matting and specialty mats designed for a variety of industries**

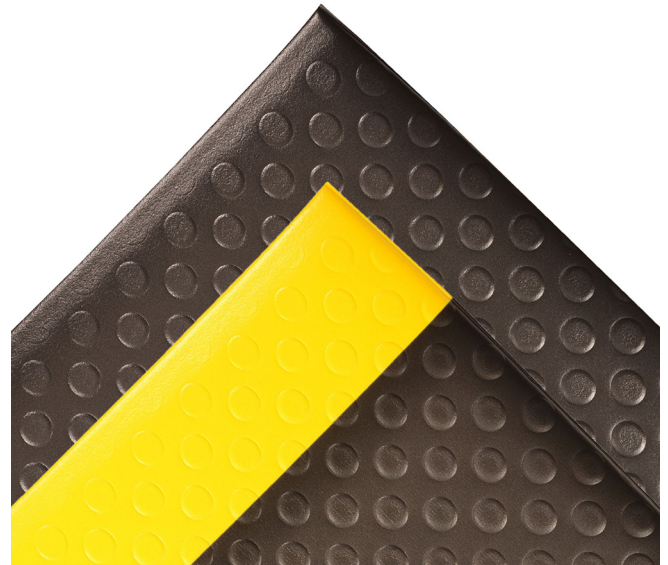


417 - BUBBLE SOF-TRED™ W/ DYNA-SHIELD® is an anti-fatigue mat that is designed to provide traction with its unique bubble top pattern that maximizes worker comfort and allows for sure footing and is easy to sweep clean. The Notrax® exclusive Dyna-Shield® PVC sponge is manufactured with a tough protective top layer that provides long lasting wear and outperforms in tear resistance and tensile strength. Designed for use in medium duty dry work areas.

Material: PVC

Features and Benefits:

- Non-directional bubble pattern embossed mat
- PVC foam provides added cushioning comfort
- Exclusive Dyna-Shield® top surface manufactured directly into the mat for long lasting wear
- Superior tear resistance and tensile strength
- Beveled edges on all 4 sides of all stock, cuts and rolls
- Max length available up to 120 linear feet (minimum 2 rolls, available in increments of 2)
- Tolerances available upon request



MODEL: 417



SPECIFICATIONS

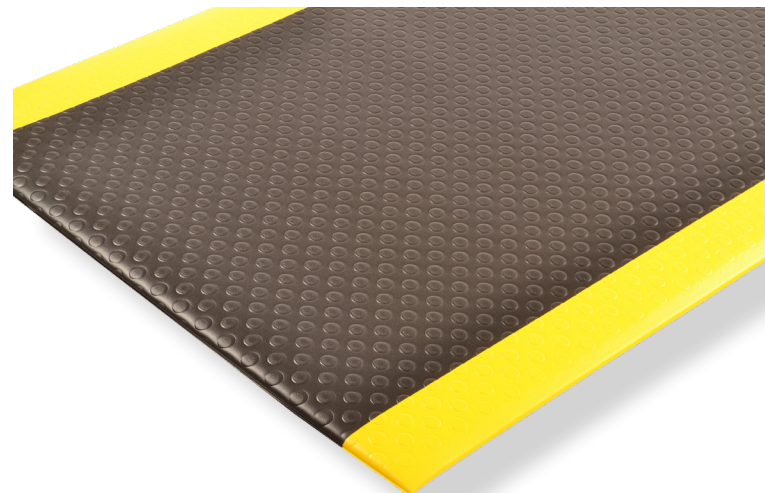
APPLICATIONS

- Dry Workstations
- Assembly Lines
- Packaging Areas
- Service Counters

Stock Sizes	2'x3', 2'x6', 3'x4', 3'x5', 3'x6', 3'x12'		
Roll Sizes	2'x60', 3'x60', 4'x60'		
Thickness	1/2"		
Cut Lengths	2', 3', and 4' widths (up to 60' long)		
Colors	 Black	 Black/Yellow	

Performance:

	Good	Better	Best	Superior
Wear Resistance				
Anti-fatigue Performance				
Slip Resistance				



Cut Lengths



Anti-Slip



Anti-Fatigue



Insulation