



Project _____
 Item _____
 Quantity _____
 CSI Section 11400
 Approval _____
 Date _____

NOBLE I-HH

NOBLE I-HH



Standard Features

- Electromechanical timer
- Internal sump design
- Built-in waste accumulator
- Delimer switch for easy removal of hard water deposits
- Removable scrap screen
- Air gap instead of vacuum breaker
- Door switch
- Convenient top mounted controls
- Auto start
- Interchangeable upper and lower stainless steel wash/rinse arms
- Wash thermometer
- Low chemical indicator lights
- Stainless steel adjustable bullet feet

Mandatory Specs

Specify voltage _____

Options

- Water Hammer Arrestor
- Scaltrol
- False Panel (for corner installations)
- Flanged Feet
- Audible Low Product Alarm

Accessories

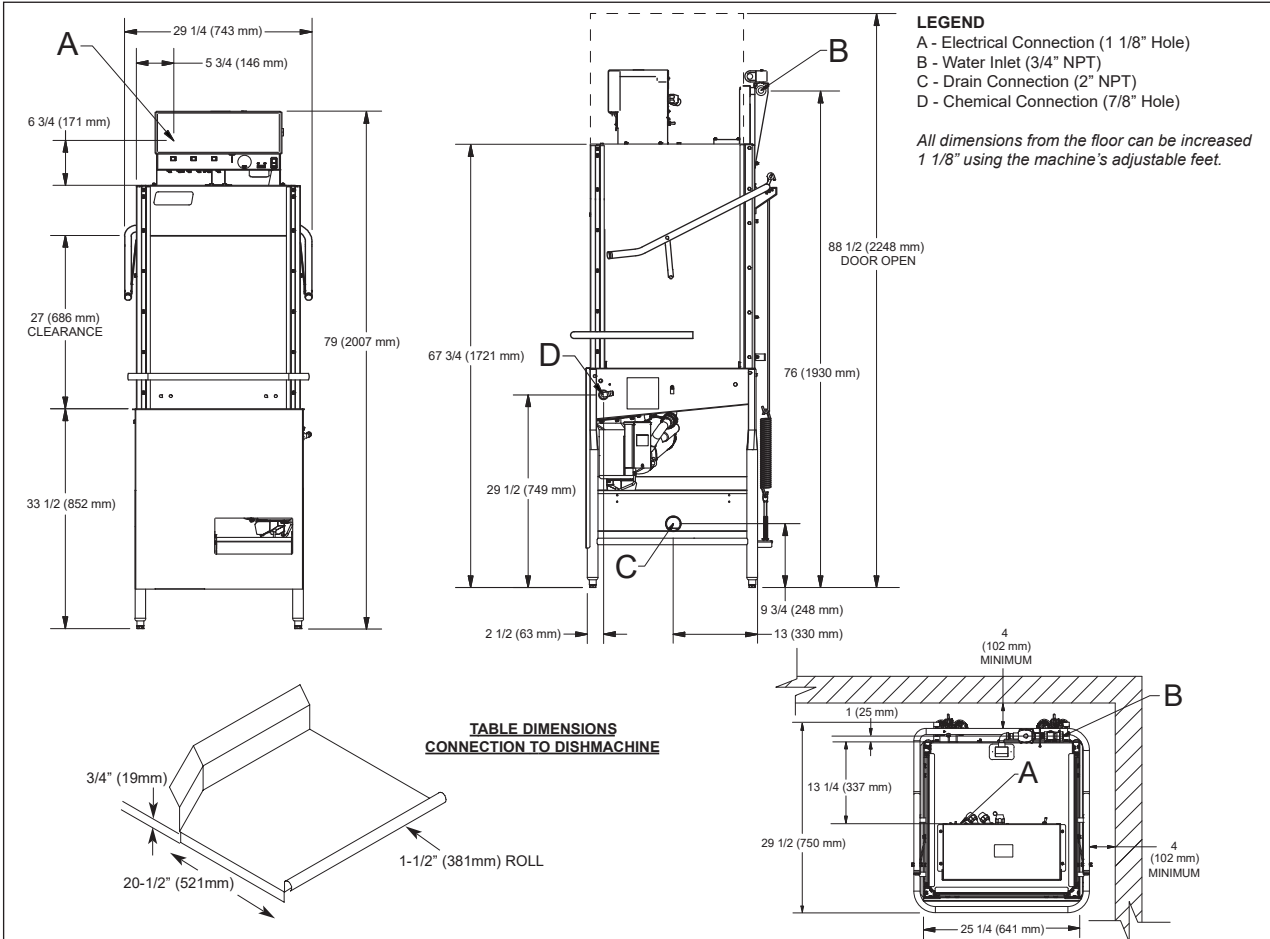
- 36-Compartment Rack
 - 4 1/8" tall (105 mm)
 - 5 5/8" tall (143 mm)
 - 7" tall (178 mm)
- Combination Rack
- Peg Rack

Specifications

- Uses 1.53 gallons (5.8 liters) water per rack
- 41 (39)* racks per hour (Normal cycle)
- Single point electrical connection
- Self-draining stainless steel pump eliminates soil/detergent carryover between wash and rinse cycles
- Fill and Dump design disposes of dirty water, replacing it with a fresh water rinse every cycle
- Field convertible from straight to corner and vice versa for flexible installations and applications (kit required)
- 27" (685.8 mm) vertical inside clearance
- Built-in chemical pumps and priming switches
- Large removable scrap screen
- Durable stainless steel construction



*Racks per hour calculated with NSF suggested load time of five (5) seconds for door-type (straight thru)



MODEL NO.	MACHINE DIMENSIONS				DRAIN HEIGHT	SHIPPING INFORMATION					
	HEIGHT	WIDTH	WIDTH BETWEEN DISHTABLES	DEPTH		WEIGHT	CLASS	CUBE	HEIGHT	WIDTH	DEPTH
NOBLE I-HH	79" (2007 mm)	29-1/4" (743 mm)	25-1/4" (641 mm)	29-1/2" (750mm)	9-3/4" (248 mm)	276 lbs (126 kg)	200	67.17 cu. ft.	83.75" (2128 mm)	33" (838 mm)	42" (1067 mm)

DIMENSIONS	
Wall Clearance (minimum)	4" (102 mm)
Standard Table Height	34" (864 mm)
Inside Clearance	27" (686 mm)
Machine Height with Door Open	88-1/2" (2248 mm)

OPERATING CAPACITY	
Racks per Hour	41 (39)*
Dishes per Hour	1,025
Glasses per Hour	1,476

OPERATING CYCLE (seconds)	Wash	Rinse	Dwell	Total Cycle
	43	25	18	86

OPERATING TEMPERATURES	
Wash	120 °F min. (49 °C); 140 °F (60 °C) recommended
Rinse	120 °F min. (49 °C); 140 °F (60 °C) recommended

WATER	
Inlet Temperature	120 °F min. (49 °C); 140 °F (60 °C) recommended
Gallons per Hour	62.8 gal (237.72 L)
Gallons per Hour**	59.74 gal (226.14 L)
Gallons per Rack	1.53
Waterline Size IPS (minimum)	3/4"
Drainline Size IPS (minimum)	2"
Flow Pressure (PSI)	20 ± 5
Wash Tank Capacity	1.53 gal (5.8 L)
Minimum Chlorine Required (PPM)	50

ELECTRICAL REQUIREMENTS			
Power Supply	Total Load	Minimum Circuit Ampacity	Maximum Overcurrent Protection
115/60/1	10.0 A	12.5 A	20 A
230/60/1	5.0 A	6.3 A	15 A

WASH PUMP MOTOR	
Wash Pump	1 HP

HOW TO SPECIFY: NOBLE I-HH

*Racks per hour calculated with NSF suggested load time of five (5) seconds for door-type (straight thru)
 **Gallons per hour calculated with NSF suggested load time of five (5) seconds for door-type (straight thru)