



Project \_\_\_\_\_  
 Item \_\_\_\_\_  
 Quantity \_\_\_\_\_  
 CSI Section 11400  
 Approval \_\_\_\_\_  
 Date \_\_\_\_\_

NOBLE I-E

## NOBLE I-E



### Standard Features

- Electronic timer
- Internal sump design
- Built-in waste accumulator
- Delimer switch for easy removal of hard water deposits
- Removable scrap screen
- Air gap instead of vacuum breaker
- Door switch
- Convenient top mounted controls
- Auto start
- Interchangeable upper and lower stainless steel wash / rinse arms
- Wash thermometer
- Low chemical indicator lights
- Stainless steel adjustable bullet feet

### Mandatory Specs

Specify voltage \_\_\_\_\_

### Options

- Water Hammer Arrestor
- Scaltrol
- False Panel (for corner installations)
- Flanged Feet
- Front Dress Panel
- Audible Low Product Alarm  
*(available only on 115v models)*

### Accessories

- 36-Compartment Rack
  - 4-1/8" tall (105 mm)
  - 5-5/8" tall (143 mm)
  - 7" tall (178 mm)
- Combination Rack
- Peg Rack

### Specifications

- Uses 1.02 gallons (3.86 liters) water per rack
- 41 (39)\* racks per hour
- Single point electrical connection
- Self-draining stainless steel pump eliminates soil/detergent carryover between wash and rinse cycles
- Fill and Dump design disposes of dirty water, replacing it with a fresh water rinse every cycle
- Field convertible from straight to corner and vice versa for flexible installations and applications (kit required)

- 17-1/4" (438 mm) vertical inside clearance
- Built-in chemical pumps and priming switches
- Large removable scrap screen
- Durable stainless steel construction



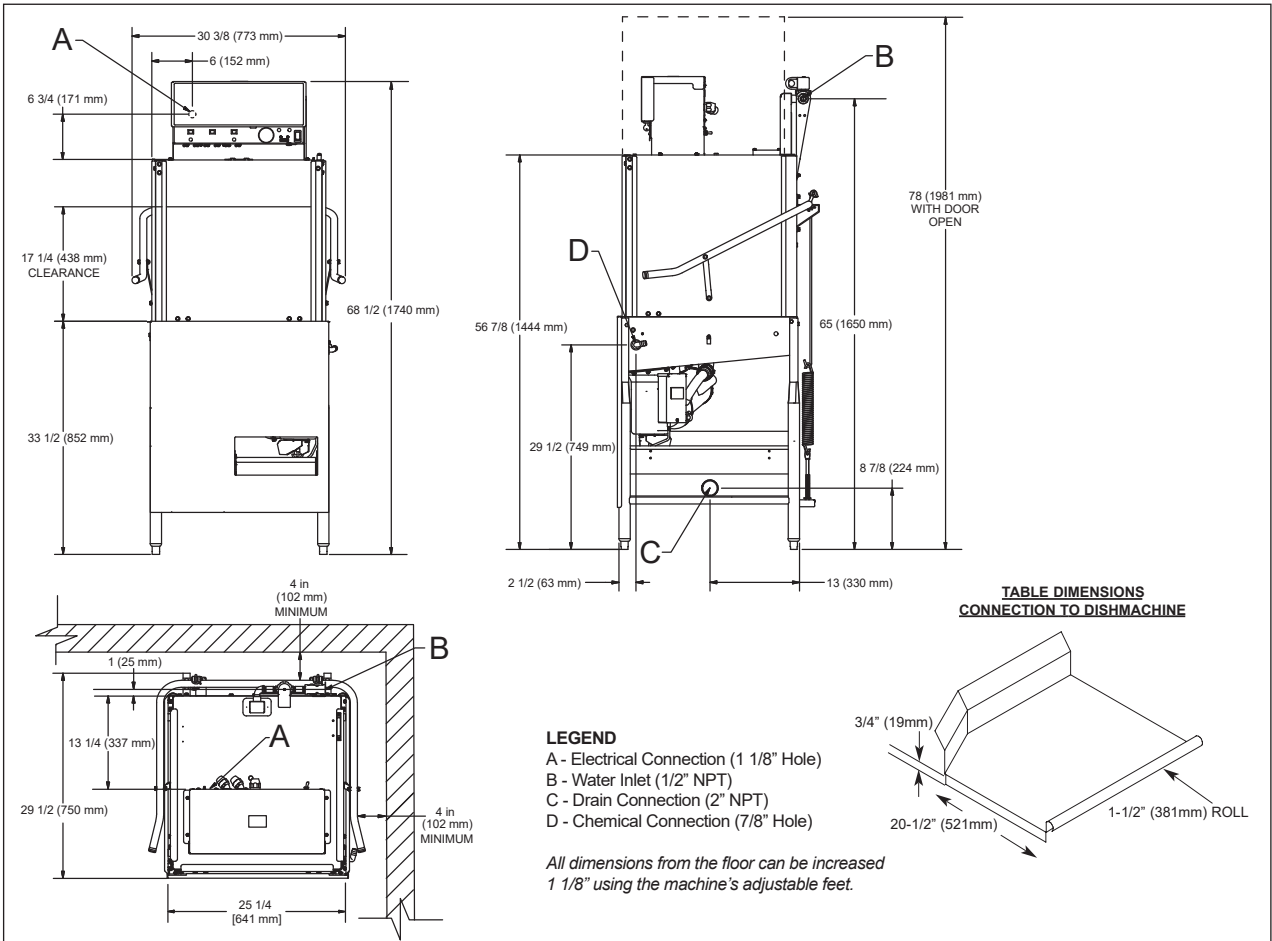
Intertek



Intertek



\*Racks per hour calculated with NSF suggested load time of five (5) seconds for door-type (straight thru)



- LEGEND**  
 A - Electrical Connection (1 1/8" Hole)  
 B - Water Inlet (1/2" NPT)  
 C - Drain Connection (2" NPT)  
 D - Chemical Connection (7/8" Hole)

All dimensions from the floor can be increased 1 1/8" using the machine's adjustable feet.

MODEL NO.	MACHINE DIMENSIONS				DRAIN HEIGHT	SHIPPING INFORMATION					
	HEIGHT	WIDTH	WIDTH BETWEEN DISHTABLES	DEPTH		WEIGHT	CLASS	CUBE	HEIGHT	WIDTH	DEPTH
NOBLE I-E	68-1/2" (1740 mm)	30-3/8" (773mm)	25-1/4" (641 mm)	29-1/2" (750mm)	8-7/8" (224 mm)	230 lbs (105 kg)	300	58.15 cu. ft.	72-1/2" (1842 mm)	33" (838 mm)	42" (1067 mm)

DIMENSIONS	
Wall Clearance (minimum)	4" (102 mm)
Standard Table Height	34" (864 mm)
Inside Clearance	17-1/4" (438 mm)
Machine Height with Door Open	78" (1981 mm)

OPERATING CAPACITY	
Racks per Hour	41 (39)*
Dishes per Hour	1,025
Glasses per Hour	1,476

OPERATING CYCLE (seconds)	Wash	Rinse	Dwell	Total Cycle
	42	25	20	87

OPERATING TEMPERATURES	
Wash	120 °F min. (49 °C); 140 °F (60 °C) recommended
Rinse	120 °F min. (49 °C); 140 °F (60 °C) recommended

**HOW TO SPECIFY:** NOBLE I-E

WATER	
Inlet Temperature	120 °F min. (49 °C); 140 °F (60 °C) recommended
Gallons per Hour	41.82 gal (158.31 L)
Gallons per Hour**	39.78 gal (150.58 L)
Gallons per Rack	1.02 gal (3.9 L)
Waterline Size IPS (minimum)	1/2"
Drainline Size IPS (minimum)	2"
Flow Pressure (PSI)	20 ± 5
Wash Tank Capacity	1.02 gal (3.86 L)
Minimum Chlorine Required (PPM)	50

ELECTRICAL REQUIREMENTS			
Power Supply	Total Load	Minimum Circuit Ampacity	Maximum Overcurrent Protection
115/60/1	10.0 A	12.5 A	20 A
230/60/1	5.0 A	6.3 A	15 A

WASH PUMP MOTOR	
Wash Pump	1 HP

\*Racks per hour calculated with NSF suggested load time of five (5) seconds for door-type (straight thru)  
 \*\*Gallons per hour calculated with NSF suggested load time of five (5) seconds for door-type (straight thru)