



MXE2000



Ellipse Blending System

New and Improved Sound Enclosure

Completely redesigned to further help **reduce noise and vibration, proving you can still have commercial power without commercial strength noise.** Retrofittable to use with all MX bases via the new jar pad and adaptor ring.

The New SE1500 Sound Enclosure is required for Auto Start mode.



Drive

Lithium-powered Ellipse Drive powers the Dasher system to rotate within the jar. Ellipse drive is controlled via 2 modes:
 1 - **Manual** - choose from 10, 15 or 20 seconds of operation via push buttons
 2 - **Auto Start** - automatically starts and runs for 30 seconds when Sound Enclosure is closed.

Lid and Dasher System

2-part assembly that helps expedite the blending process by breaking up and preventing the formation of air pockets by pushing ingredients back into the blade thus **reducing blend times and eliminating the need for a tamper.**

Jar Pad and Adaptor Ring

Sheds liquids keeping it clean and preventing material from getting into motor housing.

Docking Station

A hollow base designed to **store the Ellipse Drive between blends for easy access.** Docking Station can be placed in any direction under the base for user-convenience.

Charging Station

Charge your Drive in 2-hours! **One charge will last one full service day!**

Additional Single and Triple Charging stations sold separately.

Triple Charging Stations are ideal for larger volume establishments such as chain restaurants.



Experience the power of top-down blending that propels you beyond the limits of physics.

The Ellipse is the only **fully automated blending solution** that is powered from the top-down. It uses an **Independent Dual-Motor System**, to expedite the blending process, ensuring that your blend is consistent and to your desired quality every time!



The Ellipse utilizes the strongest and **most powerful blender base** in the Waring line, the **MX1500!**

- Powerful 3.5 HP, 30K RPM motor
- Electronic-membrane keypad with blue backlit LCD screen
- Adjustable speed controls and four programmable beverage stations
- Dual PULSE feature with reprogrammable speed control



Cylindrical Jar Design

Allows for the dasher to effortlessly rotate around the inside walls and scrape all contents back into the blade while blending, **dramatically reducing the occurrence of bridging and the formation of air pockets.**

*Made in USA with US and foreign parts.



@waringcommercial

©2022 Waring Commercial
 314 Ella T. Grasso Avenue, Torrington, CT 06790
 Tel. 800-492-7464 • Fax 860-496-9008
waringcommercialproducts.com

Ellipse Blending System

MXE2000



Ellipse Blending System MXE2000

INCLUDED ACCESSORIES



MXEBU

Ellipse Base Unit
(includes Base Unit, Jar
Pad and Adaptor Ring)



MXEFJA

Ellipse Full Jar Assembly
(includes Jar, Lid,
Dasher, and Drive)



MXEDR

Ellipse Drive



MXECHG1

Ellipse Single
Charging Station



MXEDS1

Ellipse Docking Station



SE1500

Sound Enclosure Kit
(includes Sound
Enclosure, Jar Pad
and Adaptor Ring)

OTHER ACCESSORIES



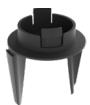
MXECHG3

Ellipse Triple
Charging Station



CAC188

32 oz. Cylindrical
Copolyester Container



CAC192

Ellipse Dasher



CAC193

Ellipse Lid
(includes gaskets)



CAC194

Ellipse Blade Assembly



CAC197

Ellipse Jar Pad



CAC198

Ellipse Jar Pad
and Adaptor Ring



CAC119

Retainer Ring Wrench
for CAC93X, CAC95
& CAC188
(to remove blending
assembly from container)



CAC187

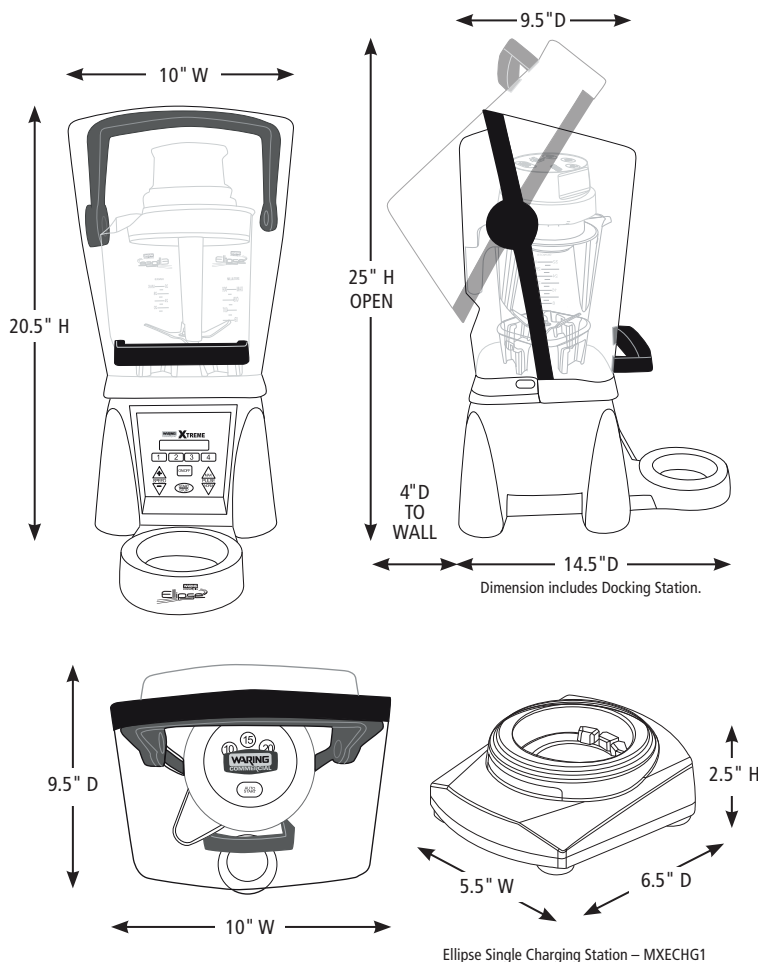
Jar with Dasher, Lid
and Blade Assembly



CAC190

Complete Retrofittable
Kit for MX Series
Blender Bases

DIMENSIONS



ELECTRICAL

Voltage: 120V

Frequency: 60Hz

Watts: 1500W

Amps: 12.5A

Plug Type: NEMA 5-15P ⓘ

Cord Length: 6 feet



Out-of-Box Weight: 20 lb.

ORDERING INFORMATION	#STD. PKG.	GIFTBOX WEIGHT	CUBIC FEET	BOX DIMENSIONS L x W x H	UPC	CASE PKG.	MC WEIGHT	MC DIMENSIONS L x W x H	MBC
MXE2000 – Ellipse Blending System	1	23 lb.	2.69	18.75" x 11.125" x 22.25"	040072099038	1	24 lb.	19" x 11.5" x 22.875"	10040072099035



@waringcommercial

©2023 Waring Commercial
314 Ella T. Grasso Avenue, Torrington, CT 06790
Tel. 800-492-7464 • Fax 860-496-9008

waringcommercialproducts.com

23WC084694 / REV 02/23