

The Apollo is a perennial favorite, combining value, comfort, adjustability and quality, and featuring a breathable, color-coordinated mesh back that matches the comfortably contoured and padded waterfall seat.

## specifications

### Overall Dimensions

26" x 20" x 40-46"  
(W x D x H)

### Seat

20.5" x 19" (W x D)

### Back

19" x 25" (W x H)

### Seat Height

18.5" (at lowest point)  
22" (at highest point)

### Weight

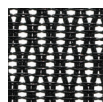
47.5 lbs

### Cube

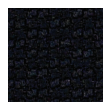
6.5

## standard colors

**black mesh**  
PM01



**black fabric**  
5806



mid-back w/  
ratchet back

MTHB94

option

**polished  
steel base**  
S330C



shown with optional  
polished steel base

## features

### Tilt Tension Control

Recline rate adapts to weight of user.

### Tilt Lock

Locks out tilt function.

### Synchro-Tilt

Back reclines in a preset ratio to seat.

### Seat Height Adjustment

Sets seat height to desired position relative to floor.

### Waterfall Seat

Front of cushion slopes to reduce pressure on the back of the knees.

### Width Adjustable Arms

Adjusts arms in or out for proper ergonomic positioning.

### Arm Height Adjustment

Adjusts arm up or down for proper ergonomic positioning while seated.

### 2.8" Ratchet Back height Adjustment

Backrest easily adjusts up or down relative to seat for personalized lumbar region support and comfort.



**eurotech**  
a raynor group company

**1.800.637.0005**

email: [customerservice@raynorgroup.com](mailto:customerservice@raynorgroup.com)  
catalog requests: [literature@raynorgroup.com](mailto:literature@raynorgroup.com)

**fabrix** | custom  
upholstery

FABRIX 1

FABRIX 2

FABRIX 3

C.O.M. YARDAGE  
1.00